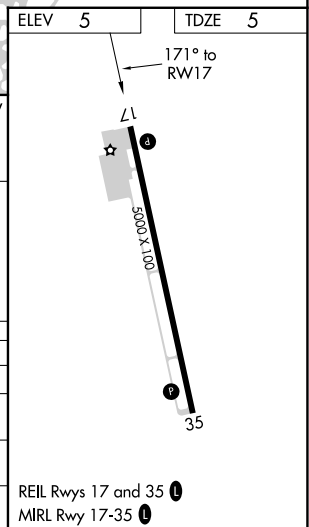
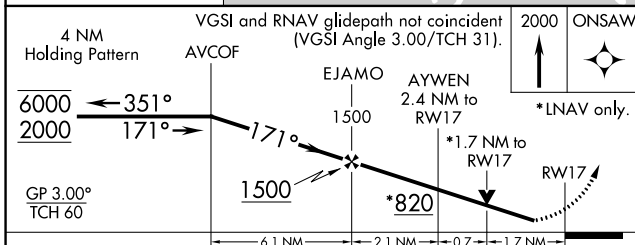
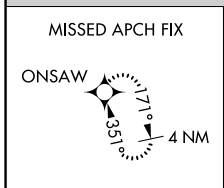
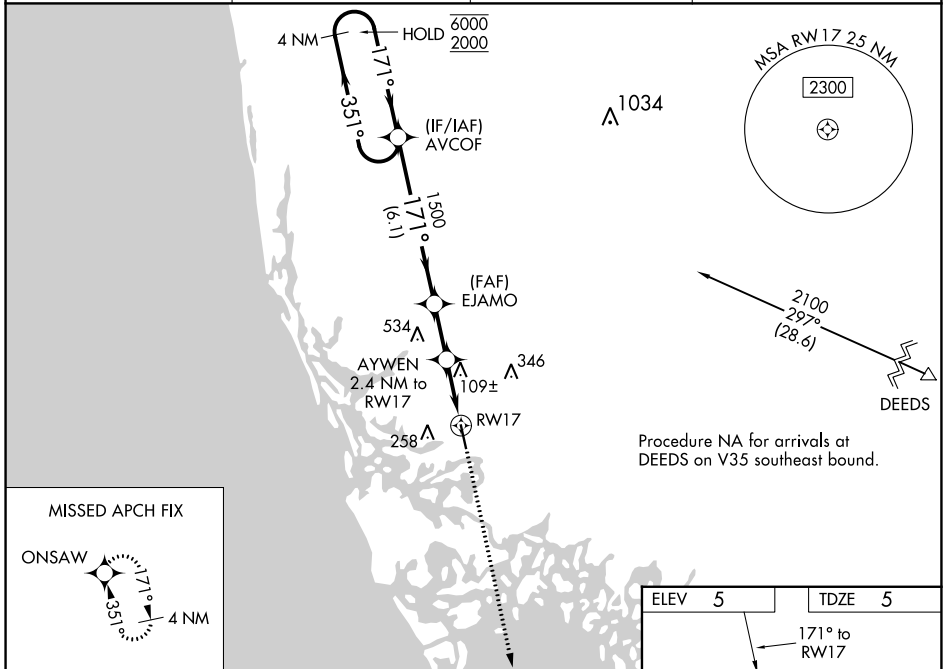


WAAS CH <b>93516</b> <b>W17A</b>	APP CRS <b>171°</b>	Rwy Idg <b>5000</b> TDZE <b>5</b> Apt Elev <b>5</b>
--	------------------------	---

# RNAV (GPS) RWY 17

MARCO ISLAND EXEC (MKY)

PBN APCH.		<p><b>⚠</b> Baro-VNAV and VDP NA when using Naples altimeter setting. Rwy 17 helicopter visibility reduction below 3/4 SM NA. For uncompensated Baro-VNAV systems, LNAV/VNAV NA below 2°C or above 54°C. When local altimeter setting not received, use Naples altimeter setting and increase LPV DA to 326 feet; increase LNAV/VNAV DA to 484 feet, increase all MDAs 40 feet and LNAV visibility Cat C to 1 1/4 SM and Circling visibility Cat C to 2 SM.</p>		<p>MISSED APPROACH: Climb to 2000 direct ONSAW and hold.</p>	
AWOS-3PT <b>120.075</b>	FORT MYERS APP CON ★ <b>124.125 371.85</b>	CLNC DEL <b>120.8</b>	UNICOM <b>122.7 (CTAF) 0</b>		



CATEGORY	A	B	C	D
LPV DA	300-1 295 (300-1)			
LNAV/VNAV DA	458-1 1/2 453 (500-1 1/2)			
LNAV MDA	560-1 555 (600-1)	560-1 1/2 555 (600-1 1/2)	560-1 3/4 555 (600-1 3/4)	
CIRCLING	620-1 615 (700-1)	660-1 3/4 655 (700-1 3/4)	840-2 3/4 835 (900-2 3/4)	

SE-3, 11 JUL 2024 to 08 AUG 2024

SE-3, 11 JUL 2024 to 08 AUG 2024