

|  |                        |   |   |
|--|------------------------|---|---|
| WAAS<br>CH <b>72628</b><br><b>W36A</b> | APP CRS<br><b>358°</b> | Rwy Idg<br>TDZE <b>256</b><br>Apt Elev <b>256</b> | <b>3204</b><br><b>256</b><br><b>256</b> |
|--|------------------------|---|---|

# RNAV (GPS) RWY 36

JONESBORO (F88)

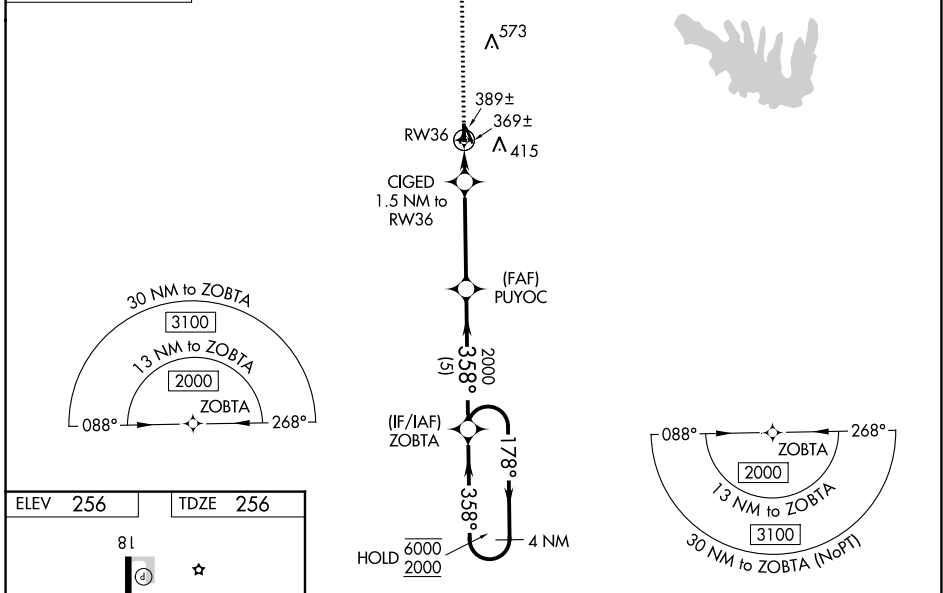
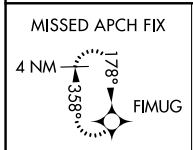
RNP APCH - GPS

▼ VDP NA when using Ruston altimeter setting. Obtain local altimeter setting on CTAF; when not received, use Ruston altimeter setting and increase all MDAs 60 feet, and LP, LNAV and Circling visibility Cat C ¼ SM.

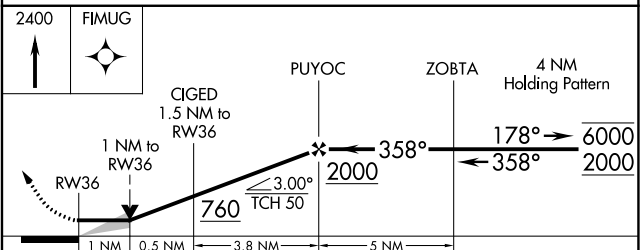
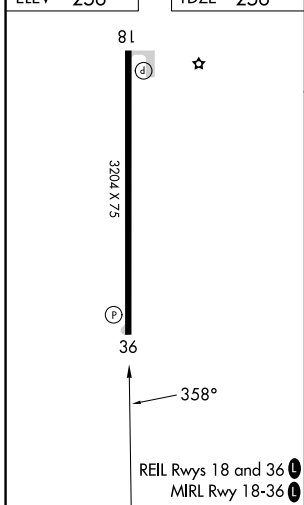
MISSED APPROACH: Climb to 2400 direct FIMUG and hold.

MONROE APP CON ★  
**126.9 307.9**

CTAF  
**122.9 0**



|          |          |
|----------|----------|
| ELEV 256 | TDZE 256 |
|----------|----------|



| CATEGORY | A                 | B           | C                      | D  |
|----------|-------------------|-------------|------------------------|----|
| LP MDA   | 620-1 364 (400-1) |             |                        | NA |
| LNAV MDA | 640-1             | 384 (400-1) | 640-1½<br>384 (400-1½) | NA |
| CIRCLING | 780-1             | 524 (600-1) | 880-1¾<br>624 (700-1¾) | NA |