

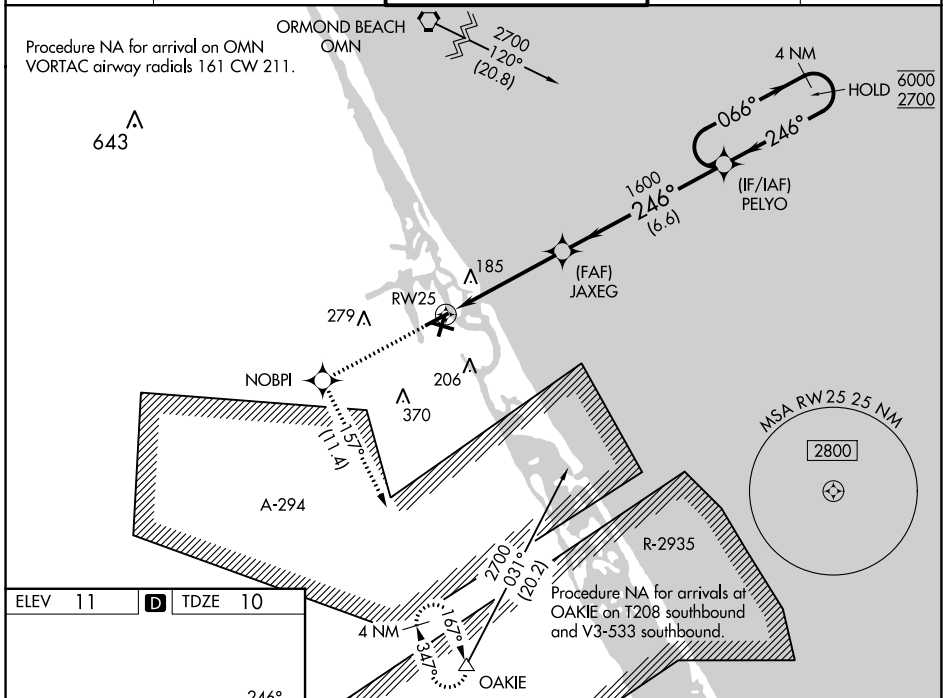
WAAS CH 50500 W25A	APP CRS 246°	Rwy Idg TDZE 10 Apt Elev 11	4463
--	------------------------	---	-------------

RNAV (GPS) RWY 25

NEW SMYRNA BEACH MUNI (EVB)

RNP APCH-GPS.		<p>▼ Rwy 25 helicopter visibility reduction below 1 SM NA. Straight-in Rwy 25 NA at night, Circling Rwy 7, 11, 25 NA at night. When local altimeter setting not received, use Daytona Beach altimeter setting increase LPV DA to 328 feet and all MDA 40 feet. Increase LNAV Cat C visibility 1/8 SM and Circling Cat C visibility 1/4 SM.</p>		<p>MISSED APPROACH: Climb to 4000 direct NOBPI and on track 157° to OAKIE and hold, continue climb-in-hold to 4000.</p>	
---------------	--	--	--	---	--

ATIS 124.625	DAYTONA APP CON 125.35 322.3	NEW SMYRNA BEACH TOWER* 119.675 (CTAF) 0	GND CON 121.325	UNICOM 122.95
------------------------	--	--	---------------------------	-------------------------



ELEV 11	D	TDZE 10	<p>Procedure NA for arrivals at OAKIE on T208 southbound and V3-533 southbound.</p>	
4000	NOBPI	tr 157°	OAKIE	VGSI and RNAV glidepath not coincident (VGSI Angle 3.00/TCH 46).
4000	NOBPI	tr 157°	OAKIE	4 NM Holding Pattern
4000	NOBPI	tr 157°	OAKIE	PELYO
4000	NOBPI	tr 157°	OAKIE	066° → 6000
4000	NOBPI	tr 157°	OAKIE	← 246° 2700
4000	NOBPI	tr 157°	OAKIE	GP 3.00° TCH 60
4000	NOBPI	tr 157°	OAKIE	4.7 NM
4000	NOBPI	tr 157°	OAKIE	6.6 NM
CATEGORY	A	B	C	D
LPV DA	303-1 293 (300-1)			NA
LNAV MDA	440-1	430 (500-1)	440-1 1/4 430 (500-1 1/4)	NA
C CIRCLING	440-1 429 (500-1)	520-1 509 (600-1)	680-1 3/4 669 (700-1 3/4)	NA

SE-3, 11 JUL 2024 to 08 AUG 2024

SE-3, 11 JUL 2024 to 08 AUG 2024