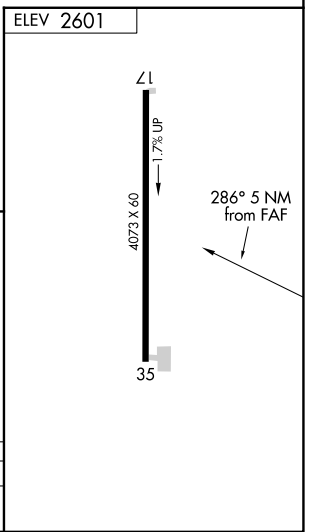
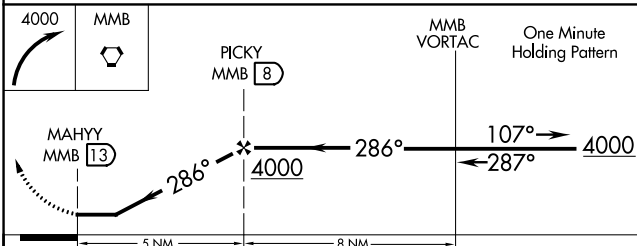
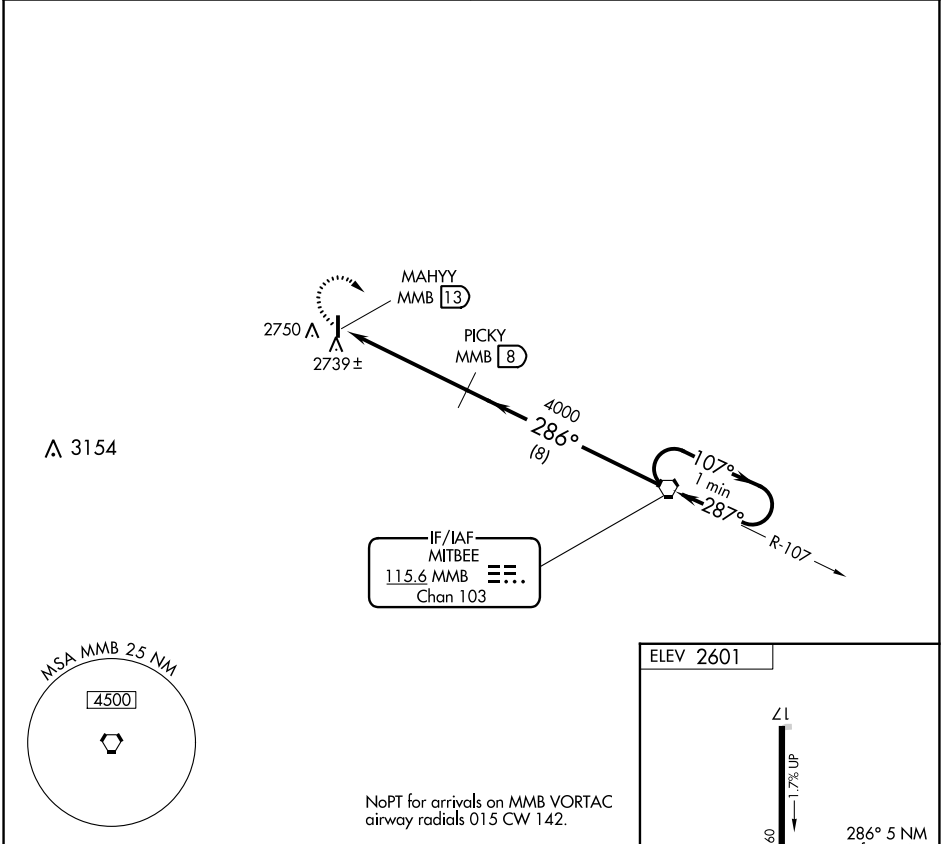


VORTAC MMB 115.6 Chan 103	APP CRS 286°	Rwy Idg TDZE Apt Elev 2601	N/A N/A 2601
---	------------------------	--	---

VOR/DME-A
FOLLETT/LIPSCOMB COUNTY (T93)

<p>▽ Use Gage, OK altimeter setting, when not received use Perryton, TX altimeter setting and increase all MDA 20 feet.</p> <p>△ NA</p>	<p>MISSED APPROACH: Climbing right turn to 4000 direct MMB VORTAC and hold.</p>
---	--

<p>KANSAS CITY CENTER 126.95 379.2</p>	<p>CTAF 122.9</p>
--	-------------------------------------



CATEGORY	A	B	C	D
CIRCLING	3160-1 559 (600-1)		NA	

SC-2, 11 JUL 2024 to 08 AUG 2024

SC-2, 11 JUL 2024 to 08 AUG 2024