

WAAS CH 86832 W32A	APP CRS 320°	Rwy Idg 3205 TDZE 875 Apt Elev 876
--	------------------------	---

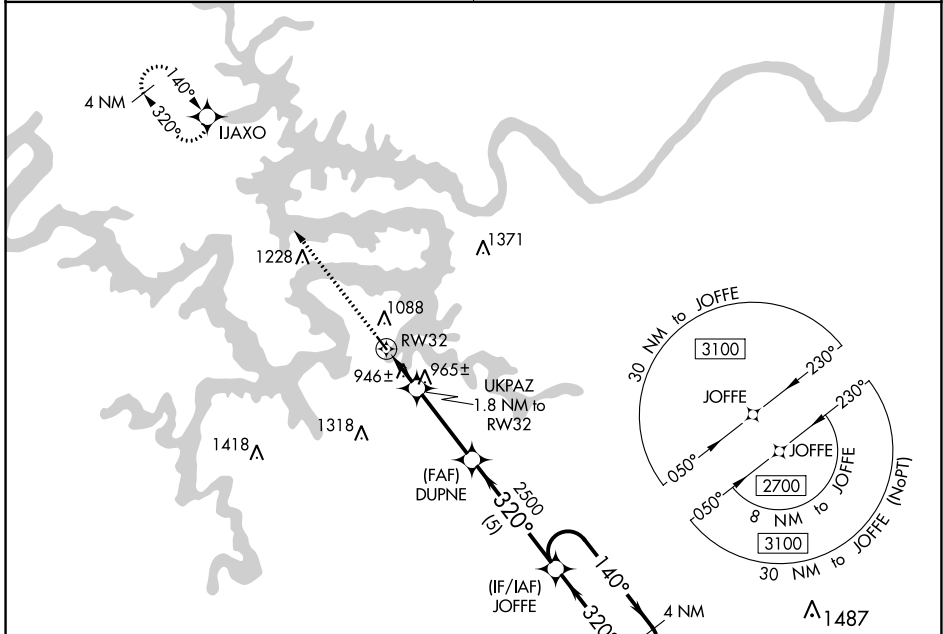
RNAV (GPS) RWY 32

GRAND GLAIZE-OSAGE BEACH (K15)

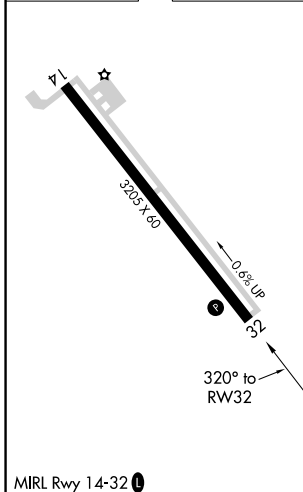
NA DME/DME RNP-0.3 NA. Use Kaiser Lake Ozark altimeter setting; when not received, use Camden ton altimeter setting and increase all MDA 40 feet. Procedure NA at night. Helicopter visibility reduction below 1 SM NA.

MISSED APPROACH: Climb to 2700 direct IJAXO and hold.

MIZZU APP CON **124.1 353.925** UNICOM **122.8 (CTAF) 0**



ELEV 876	TDZE 875
----------	----------



2700	IJAXO	Visual Segment - Obstacles.	JOFFE	4 NM Holding Pattern
		UKPAZ 1.8 NM to RW32	DUPNE	
		RW32	2500	1460
		1.8 NM	3.2 NM	5 NM
CATEGORY	A	B	C	D
LP MDA	1220-1	345 (400-1)		NA
LNAV MDA	1240-1	365 (400-1)		NA
CIRCLING	1420-1	544 (600-1)		NA

NC-3, 11 JUL 2024 to 08 AUG 2024

NC-3, 11 JUL 2024 to 08 AUG 2024