

WAAS CH <b>45803</b> <b>W19A</b>	APP CRS <b>187°</b>	Rwy Idg <b>4206</b> TDZE <b>795</b> Apt Elev <b>798</b>
--	------------------------	---

# RNAV (GPS) RWY 19

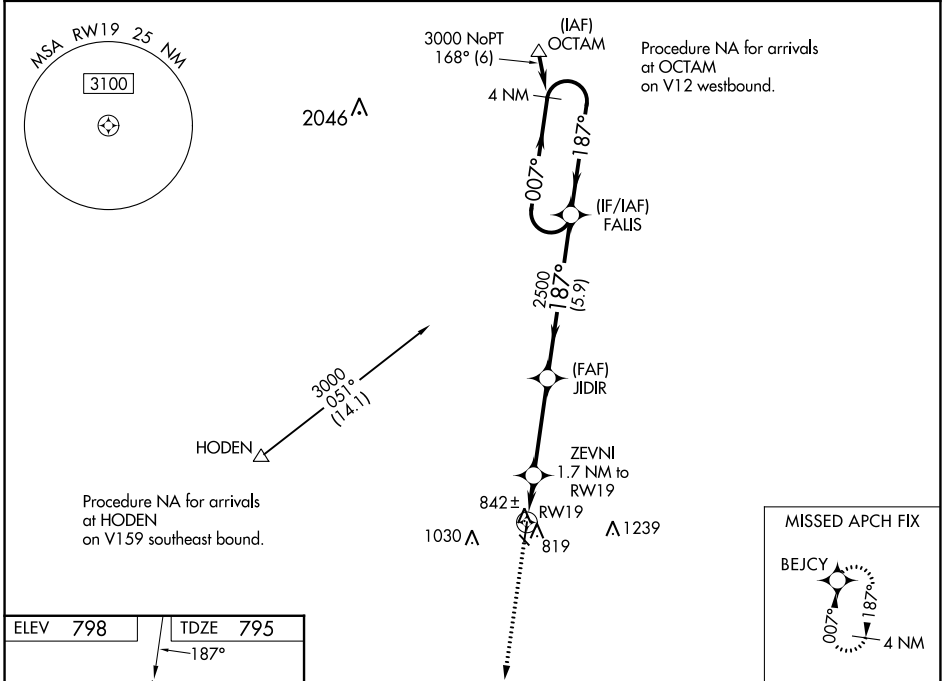
SKYHAVEN (RCM)

RNP APCH - GPS.

**⚠** Baro-VNAV NA when using Whiteman AFB altimeter setting. For uncompensated Baro-VNAV systems, LNAV/VNAV NA below -16°C or above 54°C. When local altimeter setting not received, use Knob Noster altimeter setting and increase LPV DA to 1084 feet and all visibilities 1/8 SM. Increase LNAV/VNAV DA to 1139 feet and all visibilities 1/8 SM. Increase all MDAs 40 feet and Circling visibility Cat C 1/4 SM. Circling Rwy 32 NA at night.

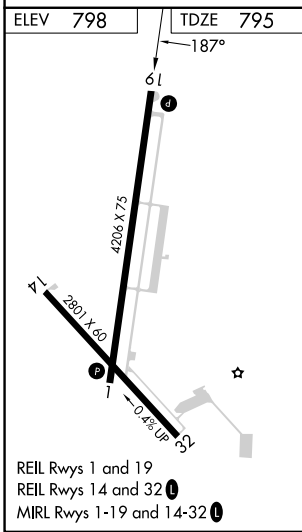
**MISSED APPROACH:**  
Climb to 3000 direct BEJCY and hold.

AWOS-3PT <b>119.575</b>	WHITEMAN APP CON ★ <b>127.45 284.0</b>	UNICOM <b>123.0 (CTAF) 0</b>
----------------------------	---	---------------------------------

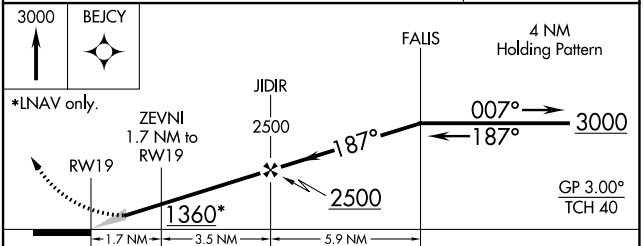


NC-3, 11 JUL 2024 to 08 AUG 2024

NC-3, 11 JUL 2024 to 08 AUG 2024



REIL Rwy 1 and 19  
REIL Rwy 14 and 32  
MIRL Rwy 1-19 and 14-32



CATEGORY	A	B	C	D
LPV DA	1045-1	250 (300-1)		NA
LNAV/VNAV DA	1100-1	305 (400-1)		NA
LNAV MDA	1240-1	445 (500-1)	1240-1 3/8 445 (500-1 3/8)	NA
<b>C</b> CIRCLING	1260-1 462 (500-1)	1340-1 542 (600-1)	1380-1 1/2 582 (600-1 1/2)	NA