

APP CRS	Rwy Idg	N/A
145°	TDZE	N/A
	Apt Elev	963

# RNAV (GPS)-C

GRANT COUNTY (W99)

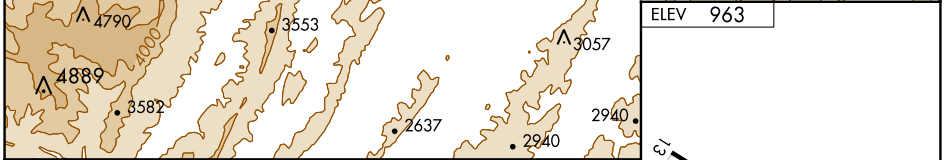
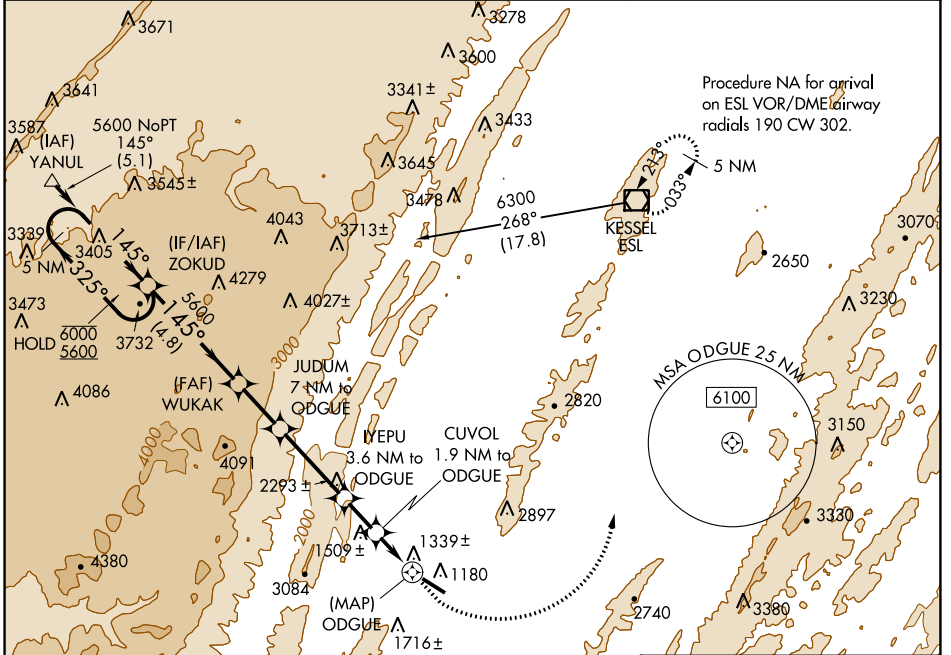
RNP APCH - GPS

⚠ When local altimeter setting not received, procedure NA.

⚠ MISSED APPROACH: Climb to 2900 then climbing left turn to 5000 direct ESL VOR/DME and hold.

⚠ -8°C

AWOS-3 <b>124.475</b>	WASHINGTON CENTER <b>133.55 322.55</b>	UNICOM <b>122.8 (CTAF)</b>
--------------------------	---	-------------------------------



5 NM Holding Pattern	ZOKUD	WUKAK	JUDUM 7 NM to ODGUE	IYEPU 3.6 NM to ODGUE	CUVOL 1.9 NM to ODGUE	ODGUE
6000 ← 325°	5600 ← 145°	5600	4800	3600	3040	
4.8 NM	2.2 NM	3.4 NM	1.7 NM	1.9 NM	0.5	
2900	5000	ESL				

CATEGORY	A	B	C	D
CIRCLING	2400-1¼ 1437 (1500-1¼)	2400-1½ 1437 (1500-1½)	NA	NA

MIRL Rwy 13-31

REIL Rws 13 and 31