

LOC/DME I-JNX 111.15 Chan 48(Y)	APP CRS 032°	Rwy Idg 5500 TDZE 147 Apt Elev 164
---	------------------------	---

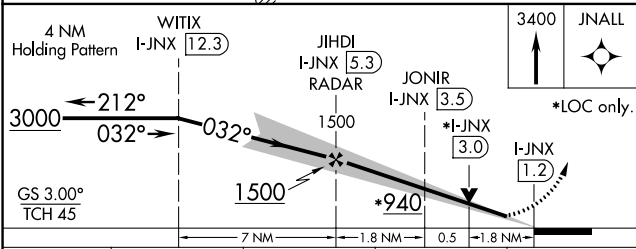
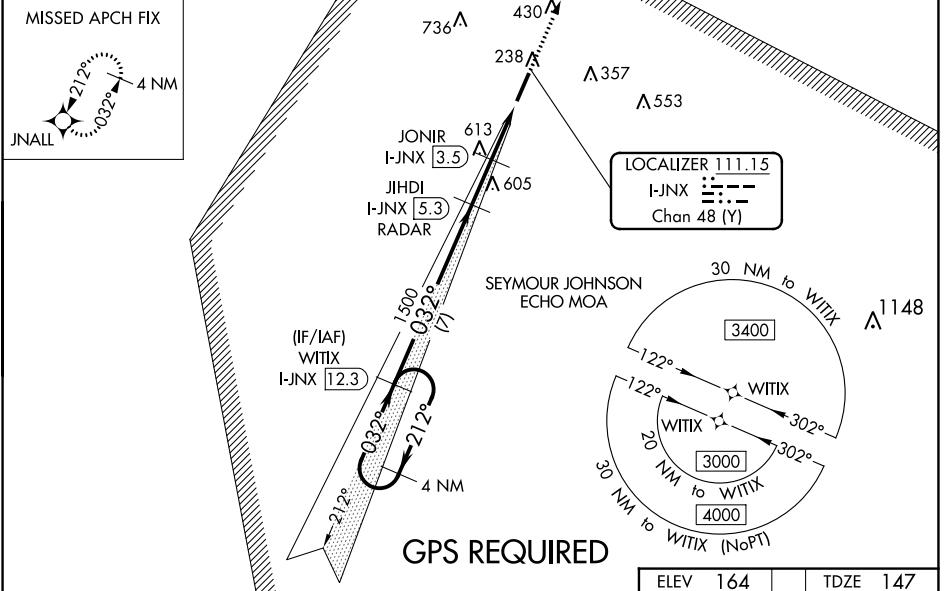
ILS Y or LOC Y RWY 3

JOHNSTON RGNL (JNX)

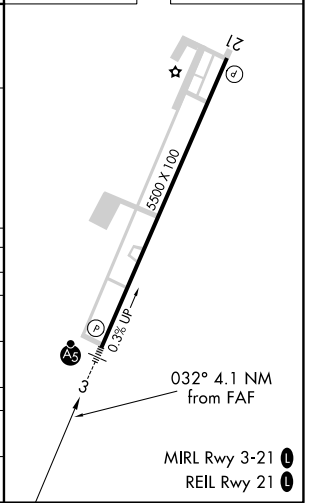
NA GPS required. VDP NA with Erwin altimeter setting. When local altimeter setting not received, use Erwin altimeter setting: increase DA to 447 feet, increase all MDA 60 feet and S-LOC 3 Cat C/D and Circling Cat A visibility ¼ mile, and JONIR fix minimums S-LOC 3 Cat C/D visibility ½ mile and Circling Cat C ¼ mile. For inop MALSR, increase S-LOC 3 Cat C/D visibility to 2½ mile and JONIR fix minimums S-LOC 3 Cat C/D to 1¾ mile. For inop MALSR when using Erwin altimeter setting, increase S-ILS all Cats visibility to 1 mile.

MALSR MISSED APPROACH: Climb to 3400 direct JNALL and hold, continue climb-in-hold to 3400.

AWOS-3 120.225	RALEIGH APP CON 125.3 353.675	GCO 135.075	UNICOM 122.725 (CTAF)
--------------------------	---	-----------------------	---------------------------------



CATEGORY	A	B	C	D
S-ILS 3	397-½ 250 (300-½)			
S-LOC 3	940-½ 793 (800-½)	940-¾ 793 (800-¾)	940-1¾	793 (800-1¾)
CIRCLING	940-1 776 (800-1)	940-1¼ 776 (800-1¼)	940-2½ 776 (800-2½)	1100-3 936 (1000-3)
JONIR FIX MINIMUMS				
S-LOC 3	780-½	633 (700-½)	780-1¾	633 (700-1¾)
CIRCLING	780-1	616 (700-1)	920-2¼ 756 (800-2¼)	1100-3 936 (1000-3)



SE-2, 11 JUL 2024 to 08 AUG 2024

SE-2, 11 JUL 2024 to 08 AUG 2024