

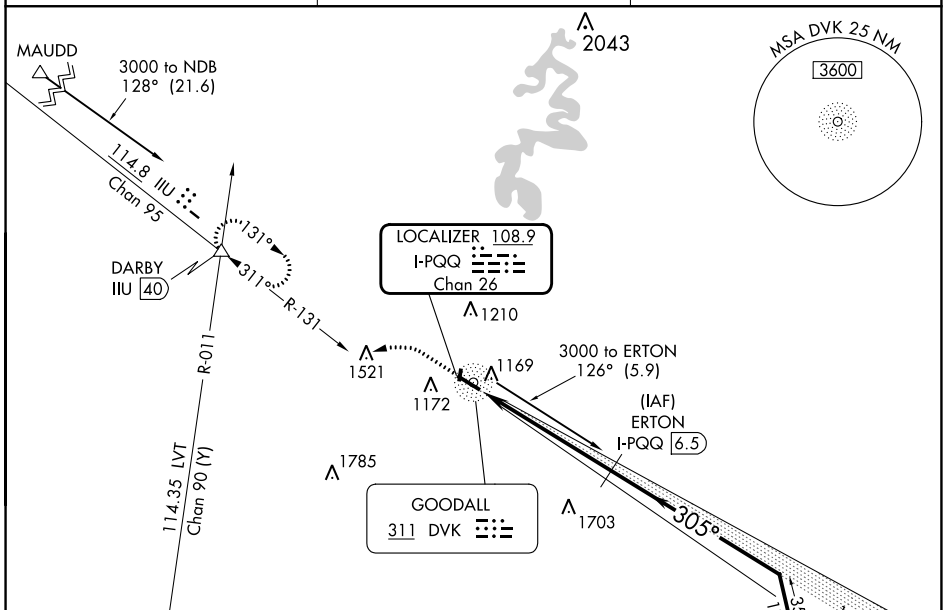
LOC/DME I-PQQ 108.9 Chan 26	APP CRS 305°	Rwy Idg TDZE Apt Elev	5000 1016 1022
--	------------------------	-----------------------------	---

LOC RWY 31
STUART POWELL FLD (DVK)

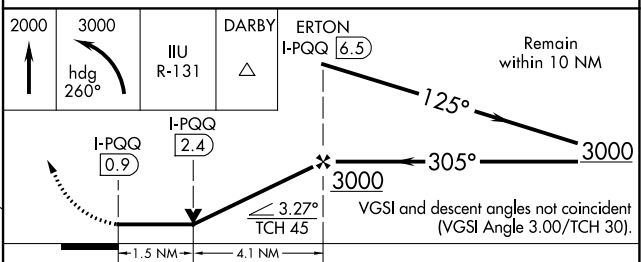
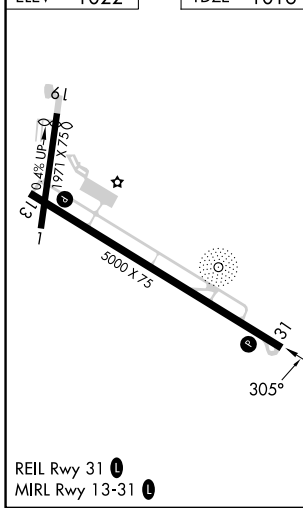
DME required.
ADF or RADAR required for procedure entry.

MISSED APPROACH: Climb to 2000 then climbing left turn to 3000 on heading 260° and IJU VORTAC R-131 to DARBY INT and hold.

AWOS-3 128.325	LEXINGTON APP CON 120.15 259.3	UNICOM 122.8 (CTAF)
--------------------------	--	-------------------------------



ELEV 1022	TDZE 1016
-----------	-----------



CATEGORY	A	B	C	D
S-31	1520-1	504 (500-1)	1520-1 ³ / ₈	504 (500-1 ³ / ₈)
CIRCLING	1520-1 498 (500-1)	1700-1 678 (700-1)	1720-2 698 (700-2)	1840-2 ³ / ₄ 818 (900-2 ³ / ₄)

SE-1, 11 JUL 2024 to 08 AUG 2024

SE-1, 11 JUL 2024 to 08 AUG 2024