

WAAS CH <b>82536</b> <b>W28A</b>	APP CRS <b>281°</b>	Rwy Idg TDZE Apt Elev	<b>5010</b> <b>435</b> <b>435</b>
--	------------------------	-----------------------------	---

# RNAV (GPS) RWY 28

CLAYTON MUNI (11A)

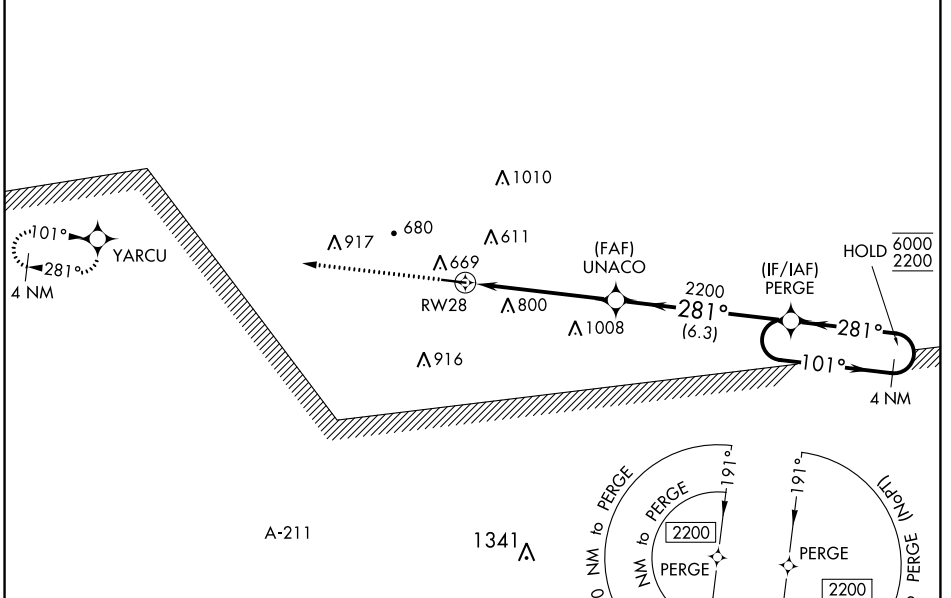
RNP APCH - GPS.

**▽** Rwy 28 helicopter visibility reduction below 3/4 SM NA. Use Eufaula altimeter setting; when not received, use Troy altimeter setting.

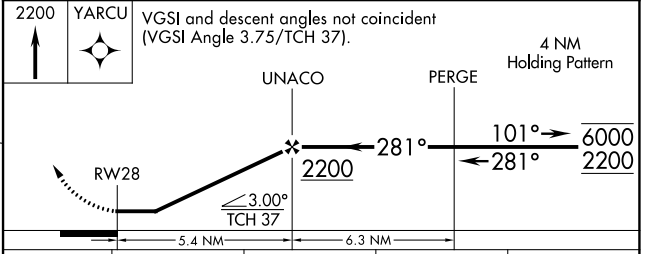
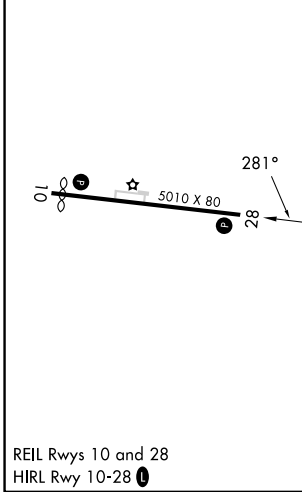
**▲** NA

MISSED APPROACH: Climb to 2200 direct YARCU and hold.

EUF ASOS <b>128.325</b>	CAIRNS APP CON ★ <b>121.1 319.25</b>	CTAF <b>122.90</b>
----------------------------	---	-----------------------



ELEV 435	TDZE 435
----------	----------



CATEGORY	A	B	C	D
LP MDA	1140-1	705 (800-1)	1140-2	705 (800-2)
LNAV MDA	1140-1	705 (800-1)	1140-2	705 (800-2)
<b>☑</b> CIRCLING	1180-1	745 (800-1)	1180-2 1/4 745 (800-2 1/4)	1300-2 3/4 865 (900-2 3/4)

SE-4, 11 JUL 2024 to 08 AUG 2024

SE-4, 11 JUL 2024 to 08 AUG 2024