

WAAS CH <b>90131</b> <b>W10A</b>	APP CRS <b>097°</b>	Rwy Idg TDZE <b>1236</b> Apt Elev <b>1238</b>	<b>3400</b>
--	------------------------	---	-------------

# RNAV (GPS) RWY 10

NEILLSVILLE MUNI (VIQ)

**Baro-VNAV NA. DME/DME RNP-0.3 NA. Helicopter visibility reduction below 3/4 SM NA. Use Marshfield altimeter setting; when not received, use Wisconsin Rapids altimeter setting and increase all DA 63 feet and all MDA 80 feet. Increase LPV and LNAV/VNAV Cats A/B visibility 1/4 mile.**

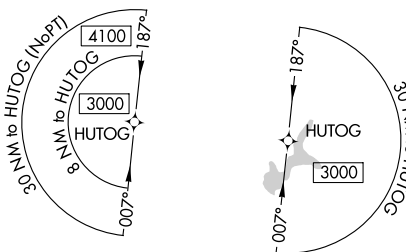
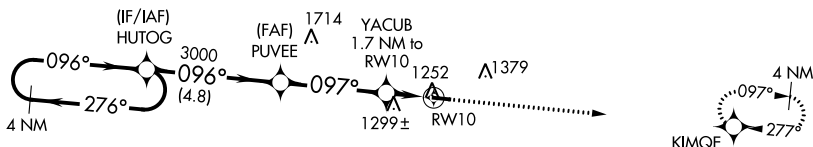
**MISSED APPROACH: Climb to 3000 direct KIMQE and hold.**

MFI ASOS  
**121.575**

MINNEAPOLIS CENTER  
**124.4 317.7**

UNICOM  
**122.8 (CTAF) 0**

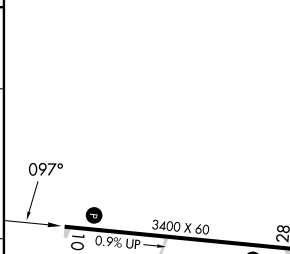
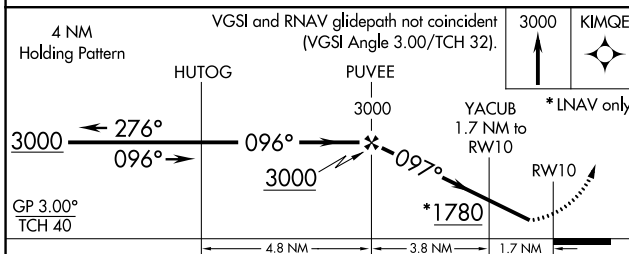
**3095**



EC-3, 11 JUL 2024 to 08 AUG 2024

EC-3, 11 JUL 2024 to 08 AUG 2024

ELEV 1238	TDZE 1236
-----------	-----------



CATEGORY	A	B	C	D
LPV DA	1526-1	290 (300-1)		NA
LNAV/VNAV DA	1526-1	290 (300-1)		NA
LNAV MDA	1600-1	364 (400-1)		NA
CIRCLING	1720-1	482 (500-1)		NA

LIRL Rwy 10-28 0
------------------