

APP CRS Rwy Idg **3400**
 277° TDZE **1237**
 Apt Elev **1238**

RNAV (GPS) RWY 28

NEILLSVILLE MUNI (VIQ)

RNP APCH.

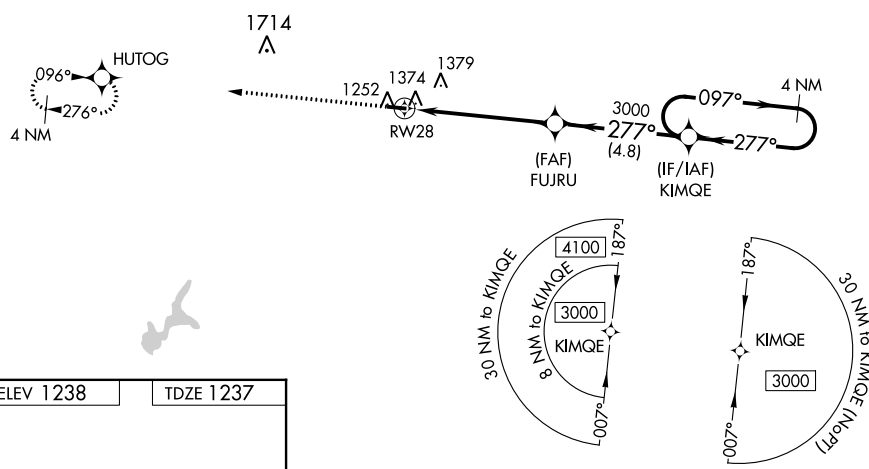
▼ Rwy 28 helicopter visibility reduction below 3/4 SM NA. Use Marshfield altimeter setting; when not received, use Wisconsin Rapids altimeter setting and increase all MDA 80 feet.
▲ NA

MISSED APPROACH:
 Climb to 3000 direct
 HUTOG and hold.

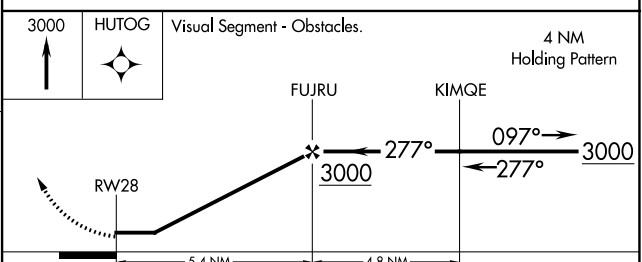
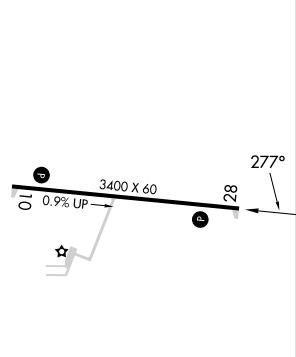
MFI ASOS
121.575

MINNEAPOLIS CENTER
124.4 317.7

UNICOM
122.8 (CTAF)



ELEV 1238 TDZE 1237



CATEGORY	A	B	C	D
LNAV MDA	1680-1	443 (500-1)	NA	
CIRCLING	1720-1	482 (500-1)	NA	

LURL Rwy 10-28

EC-3, 11 JUL 2024 to 08 AUG 2024

EC-3, 11 JUL 2024 to 08 AUG 2024