

WAAS CH <b>97738</b> <b>W33A</b>	APP CRS <b>330°</b>	Rwy Idg TDZE Apt Elev	<b>4098</b> <b>2414</b> <b>2414</b>
--	------------------------	-----------------------------	---

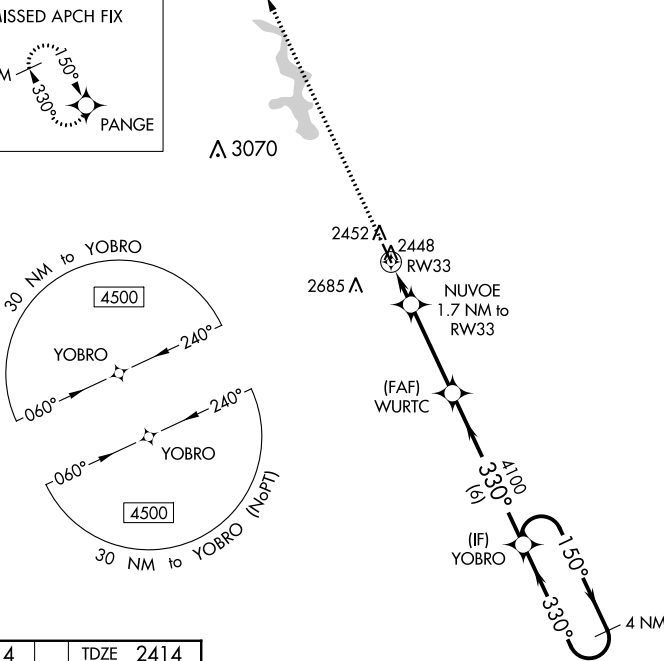
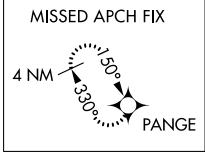
# RNAV (GPS) RWY 33

CAMBRIDGE MUNI (CSB)

**▼** Baro-VNAV NA. DME/DME RNP-0.3 NA. Helicopter visibility reduction below 3/4 SM NA.  
**▲ NA** Use Mc Cook altimeter setting when not received, use Lexington altimeter setting and increase all LPV and LNAV/VNAV DA to 2743, increase all MDA 20 feet and Circling Cat C visibility 1/8 mile.

**MISSED APPROACH:**  
Climb to 4900 direct PANGE and hold.

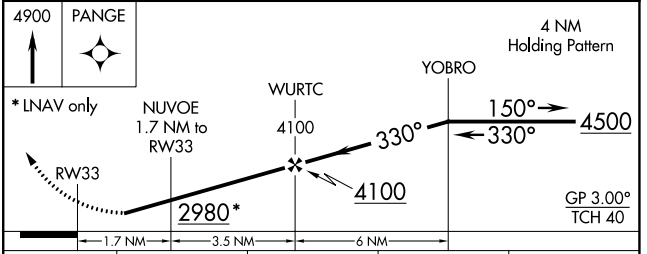
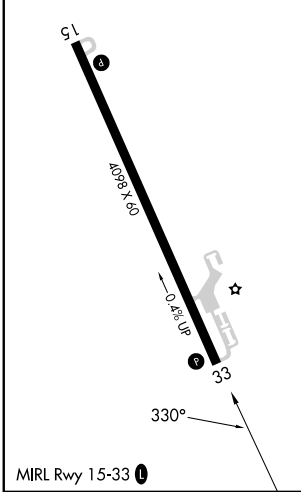
AWOS-3PT <b>118.375</b>	DENVER CENTER <b>132.7 226.675</b>	UNICOM <b>122.8 (CTAF) 0</b>
----------------------------	---------------------------------------	---------------------------------



NC-2, 11 JUL 2024 to 08 AUG 2024

NC-2, 11 JUL 2024 to 08 AUG 2024

ELEV <b>2414</b>	TDZE <b>2414</b>
------------------	------------------



CATEGORY	A	B	C	D
LPV DA	2736-1 1/8	322 (400-1 1/8)		NA
LNAV/VNAV DA	2736-1 1/8	322 (400-1 1/8)		NA
LNAV MDA	2780-1 366 (400-1)			NA
<b>C</b> CIRCLING	2920-1 506 (600-1)	3120-1 706 (800-1)	3120-2 706 (800-2)	NA