

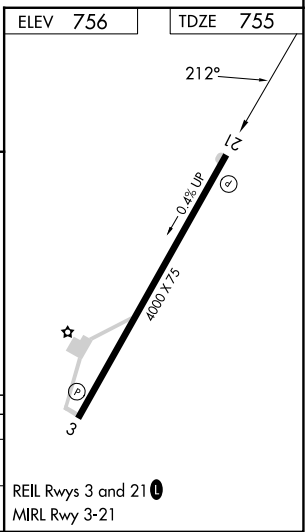
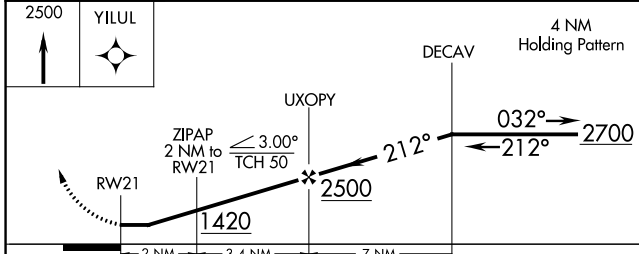
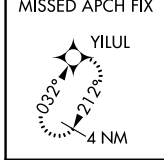
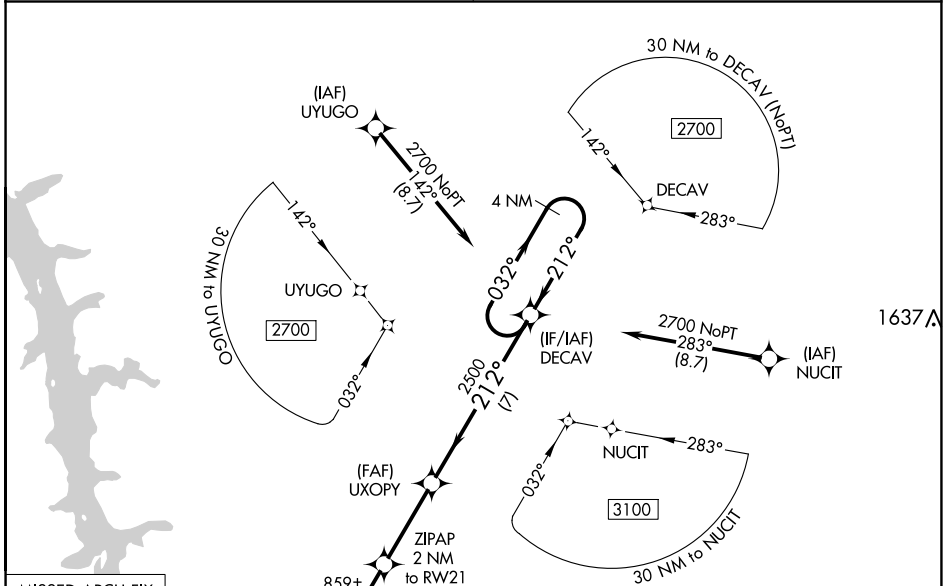
WAAS CH <b>97422</b> <b>W21A</b>	APP CRS <b>212°</b>	Rwy Idg TDZE Apt Elev	<b>4000</b> <b>755</b> <b>756</b>
--	------------------------	-----------------------------	---

# RNAV (GPS) RWY 21

HUMPHREYS COUNTY (ØM5)

RNP APCH.	<p>When local altimeter setting not received, use Nashville Intl altimeter setting: increase all MDA 160 feet and visibility Cat C and D ½ SM. Procedure NA at night. Rwy 21 helicopter visibility reduction below 1 SM NA.</p>	MISSED APPROACH: Climb to 2500 direct YILUL and hold.
-----------	---	---

MEMPHIS CENTER <b>125.85 379.25</b>	UNICOM <b>122.8 (CTAF) 0</b>
--	---------------------------------



CATEGORY	A	B	C	D
LP MDA	1120-1		365 (400-1)	
LNAV MDA	1140-1 385 (400-1)		1140-1½ 385 (400-1½)	

REIL Rws 3 and 21  
 MIRL Rwy 3-21

SE-1, 11 JUL 2024 to 08 AUG 2024

SE-1, 11 JUL 2024 to 08 AUG 2024