

|  |                        |                             |   |
|--|------------------------|-----------------------------|---|
| WAAS<br>CH <b>90222</b><br><b>W03A</b> | APP CRS<br><b>032°</b> | Rwy Idg<br>TDZE<br>Apt Elev | <b>4000</b><br><b>756</b><br><b>756</b> |
|--|------------------------|-----------------------------|---|

# RNAV (GPS) RWY 3

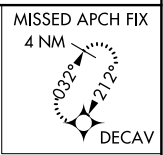
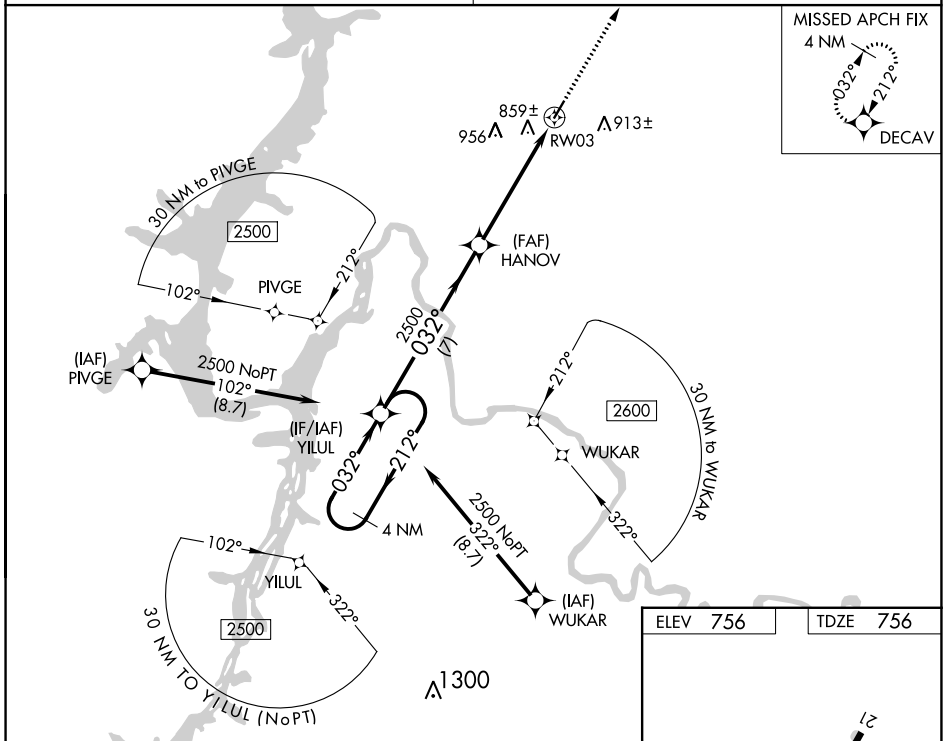
HUMPHREYS COUNTY (ØM5)

RNP APCH.

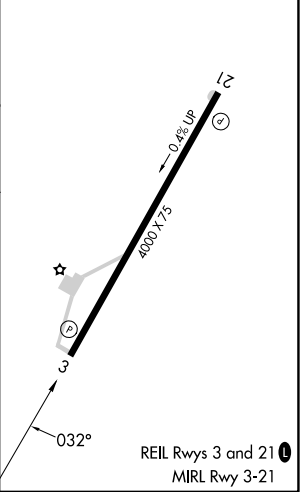
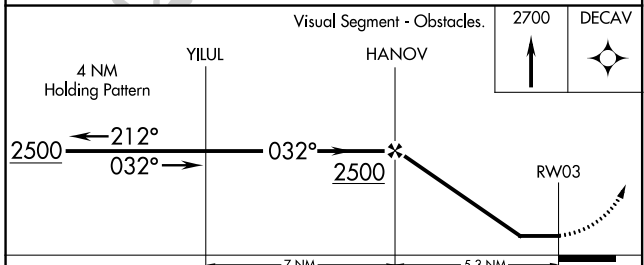
▼ When local altimeter setting not received, use Nashville Intl altimeter setting and increase all MDA 160 feet; increase LP Cat C and D visibility 3/8 mile, LNAV Cat C and D visibility 1/2 mile. Procedure NA at night. Rwy 3 helicopter visibility reduction below 1 SM NA.

▲ NA MISSED APPROACH: Climb to 2700 direct DECAV and hold.

|  |                                 |
|--|---------------------------------|
| MEMPHIS CENTER<br><b>125.85 379.25</b> | UNICOM<br><b>122.8 (CTAF) 0</b> |
|--|---------------------------------|



|          |          |
|----------|----------|
| ELEV 756 | TDZE 756 |
|----------|----------|



| CATEGORY | A | B      | C           | D |
|----------|---|--------|-------------|---|
| LP MDA   |   | 1100-1 | 344 (400-1) |   |
| LNAV MDA |   | 1120-1 | 364 (400-1) |   |

SE-1, 11 JUL 2024 to 08 AUG 2024

SE-1, 11 JUL 2024 to 08 AUG 2024