

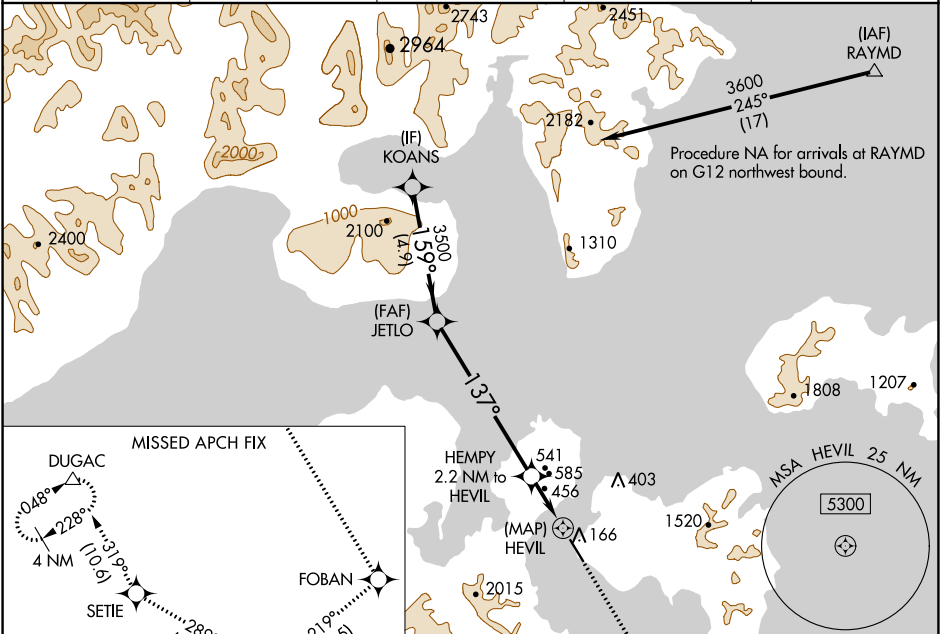
WAAS CH 86844 W 14B	APP CRS 137°	Rwy Idg TDZE Apt Elev	4099 23 24
---	------------------------	-----------------------------	---------------------------------------

RNAV (GPS) Y RWY 14

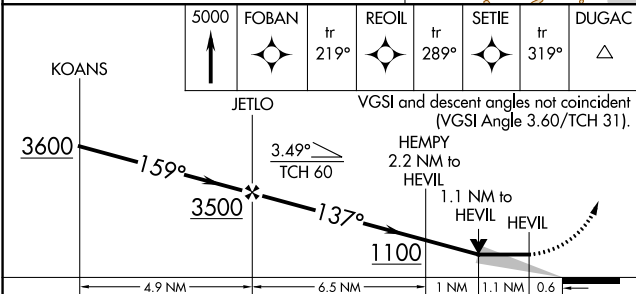
SAND POINT (SDP) (PASD)

RNP APCH-GPS.		MISSED APPROACH: Climb to 5000 on the RNAV missed approach route to DUGAC and hold.	
		Circling NA northeast of Rwy 14-32.	

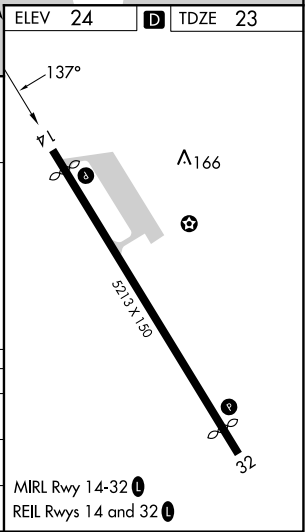
AWOS-3P 134.85	ANCHORAGE CENTER 125.35 346.3	CLNC DEL 122.3 (CTAF) 0	COLD BAY RADIO 122.3	UNICOM 122.8
--------------------------	---	-----------------------------------	--------------------------------	------------------------



ELEV 24	D TDZE 23
---------	------------------



CATEGORY	A	B	C	D
LP MDA	720-1 817 (900-1)	697 (700-1)	720-2 817 (900-2)	697 (700-2)
LNAV MDA	840-1 817 (900-1)	840-1¼ 817 (900-1¼)	840-2½ 817 (900-2½)	817 (900-2½)
C CIRCLING	840-1¼ 816 (900-1¼)		1580-3 1556 (1600-3)	2240-3 2216 (2300-3)



AK, 11 JUL 2024 to 05 SEP 2024

AK, 11 JUL 2024 to 05 SEP 2024