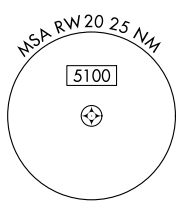
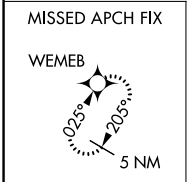
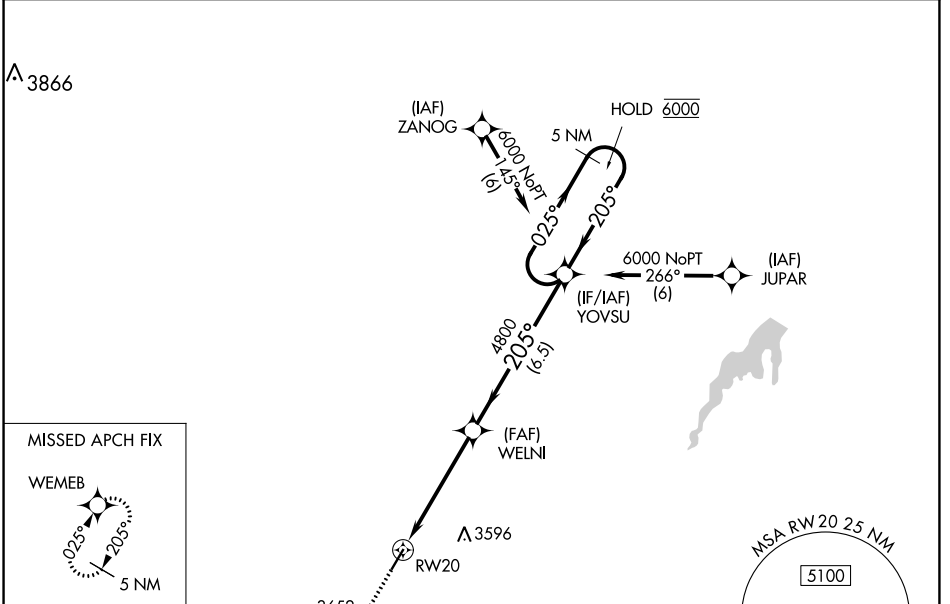


WAAS CH 42826 W20A	APP CRS 205°	Rwy Idg TDZE Apt Elev	4698 3196 3205
--	------------------------	-----------------------------	---

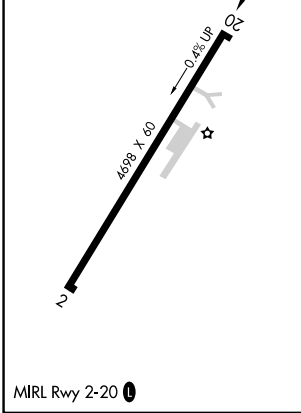
RNAV (GPS) RWY 20

GRUVER MUNI (E19)

RNP APCH - GPS.		MISSED APPROACH: Climb to 6000 direct WEMEB and hold.
Procedure NA at night. Rwy 20 helicopter visibility reduction below 1 SM NA. Use Guymon altimeter setting, when not received, use Borger altimeter setting and increase all MDA's 40 feet.		
GUY ASOS 119.925	ALBUQUERQUE CENTER 127.85 285.475	CTAF 122.9



ELEV 3205	TDZE 3196
-----------	-----------



6000	WEMEB	YOVSU	5 NM Holding Pattern
RW20 → 4800 → 6000 205° → 025° → 6000 ← 205°			
CATEGORY LP MDA LNAV MDA CIRCLING	A 3720-1 3720-1 3720-1 515 (600-1)	B 524 (600-1) 524 (600-1) 3740-1 535 (600-1)	C NA NA NA

SC-2, 11 JUL 2024 to 08 AUG 2024

SC-2, 11 JUL 2024 to 08 AUG 2024