

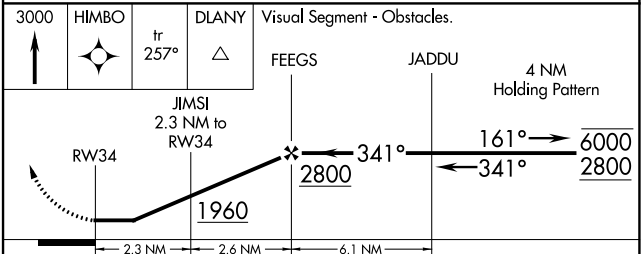
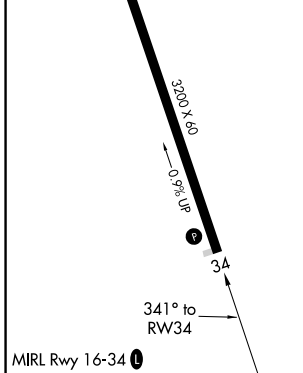
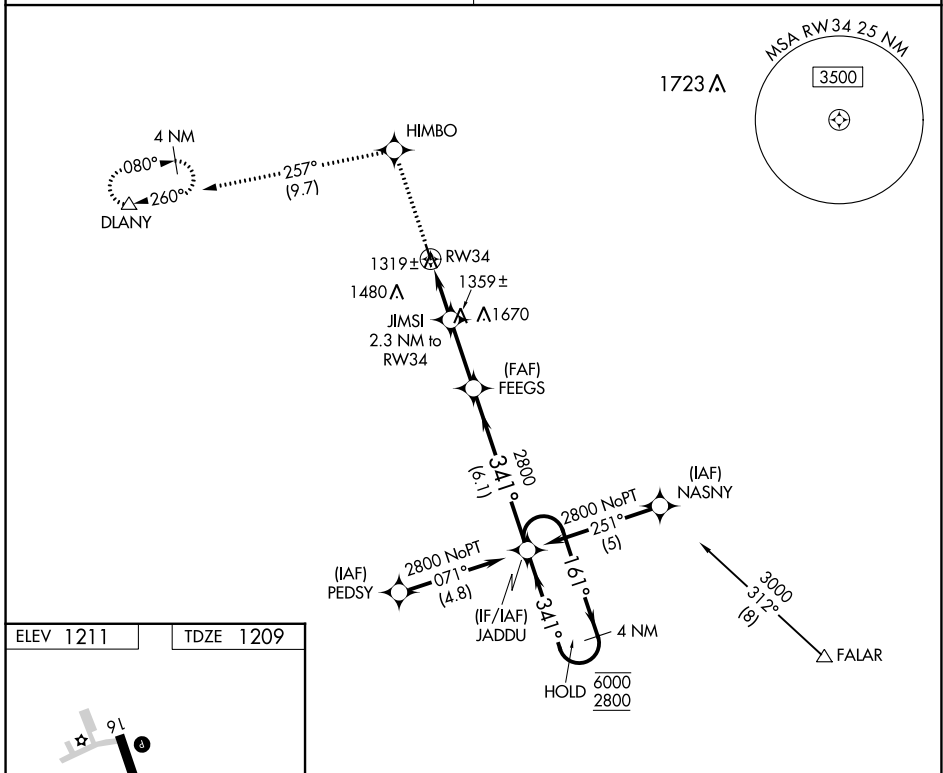
| | | |
|-------------|----------|-------------|
| APP CRS | Rwy Idg | 3200 |
| 341° | TDZE | 1209 |
| | Apt Elev | 1211 |

RNAV (GPS) RWY 34

RUSHFORD MUNI/ROBERT W BUNKE FLD (55Y)

| | |
|--|---|
| RNP APCH. | MISSED APPROACH: Climb to 3000 direct HIMBO and track 257° to DLANY and hold. |
| <p>▼ Rwy 34 helicopter visibility reduction below 1 SM NA. Use Preston altimeter setting, when not received, use Winona altimeter setting and increase all MDAs 80 feet and Cat C visibility ¼ SM.</p> <p>▲ NA</p> | |

| | |
|---|----------------------|
| ROCHESTER APP CON ★ 119.8 251.125 | CTAF 122.9 |
|---|----------------------|



| CATEGORY | A | B | C | D |
|----------|-----------------------|-----------------------|-------------------------|----|
| LNAV MDA | 1620-1 | 411 (500-1) | 1620-1¼ 411 (500-1¼) | NA |
| CIRCLING | 1720-1 509 (600-1) | 1880-1 669 (700-1) | 2080-2½ 869 (900-2½) | NA |

NC-1, 11 JUL 2024 to 08 AUG 2024

NC-1, 11 JUL 2024 to 08 AUG 2024