

WAAS CH 42931 W17A	APP CRS 174°	Rwy Idg TDZE Apt Elev	5003 229 229
--	------------------------	-----------------------------	---

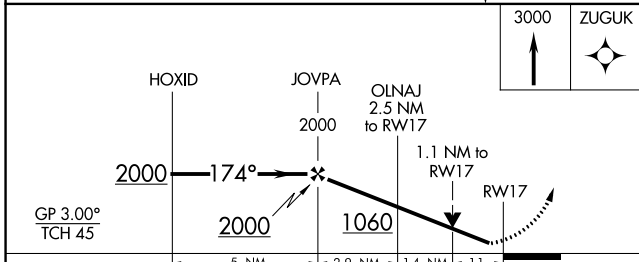
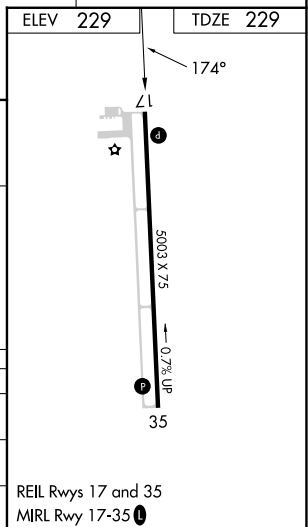
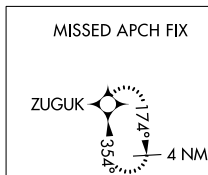
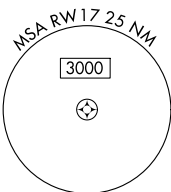
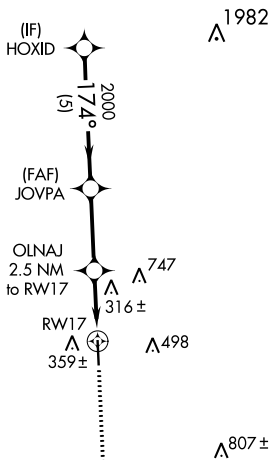
RNAV (GPS) RWY 17

NAVASOTA MUNI (60R)

RNP APCH-GPS.	<p>▼ Baro-VNAV NA. Rwy 17 helicopter visibility reduction below 3/4 SM NA.</p> <p>▲ NA When local altimeter setting not received, use Brenham altimeter setting. VDP NA when using Brenham altimeter setting.</p>	MISSED APPROACH: Climb to 3000 direct ZUGUK and hold.
---------------	---	---

AWOS-3PT 120.925	HOUSTON APP CON 134.3 360.85	CTAF 122.9	123.3
----------------------------	--	----------------------	--------------

RADAR REQUIRED



CATEGORY	A	B	C	D
LPV DA	529-1		300 (300-1)	
LNAV/VNAV DA	635-1 3/8		406 (500-1 3/8)	
LNAV MDA	620-1 391 (400-1)		620-1 3/8 391 (400-1 3/8)	

REIL Rwy 17 and 35
MIRL Rwy 17-35

SC-5, 11 JUL 2024 to 08 AUG 2024

SC-5, 11 JUL 2024 to 08 AUG 2024