

WAAS CH 69408 W34A	APP CRS 342°	Rwy Idg TDZE Apt Elev	5498 299 300
--	------------------------	-----------------------------	---

RNAV (GPS) RWY 34

ANSON COUNTY/JEFF CLOUD FLD (A/F/P)

RNP APCH - GPS.

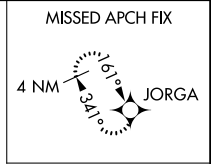
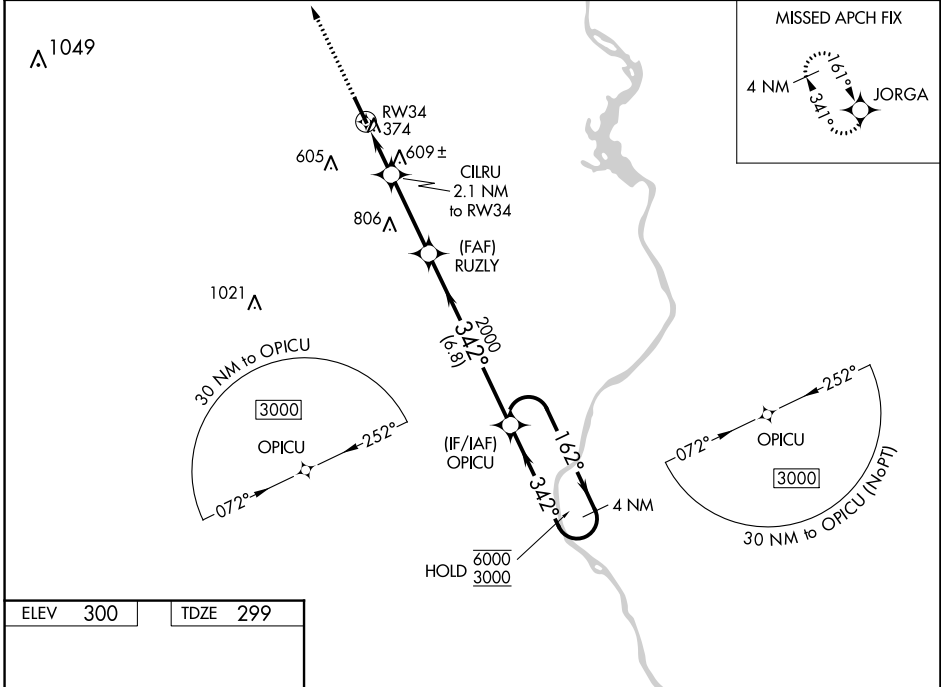
⚠
For uncompensated Baro-VNAV systems, procedure NA below -15°C or above 42°C. Rwy 34 helicopter visibility reduction below ¾ SM NA.

MISSED APPROACH: Climb to 3000 direct JORGA and hold.

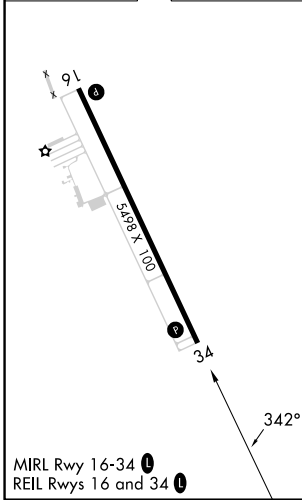
AWOS-3
119.325

CHARLOTTE APP CON
120.05 307.8

UNICOM
122.8 (CTAF) 0



ELEV 300	TDZE 299
----------	----------



3000	JORGA	OPICU	4 NM Holding Pattern	
↑	✧			
	CILRU 2.1 NM to RW34	RUZLY 2000	OPICU 162° → 6000 ← 342° 3000	
	RW34		GP 3.00° TCH 42	
	2.1 NM	3.1 NM	6.8 NM	
CATEGORY	A	B	C	D
LPV DA	649-1		350 (400-1)	
LNAV/VNAV DA	957-1 7/8		658 (700-1 7/8)	
LNAV MDA	860-1	561 (600-1)	860-1 5/8	561 (600-1 5/8)
CIRCLING	860-1	560 (600-1)	1080-2 1/4 780 (800-2 1/4)	1080-2 1/2 780 (800-2 1/2)

SE-2, 11 JUL 2024 to 08 AUG 2024

SE-2, 11 JUL 2024 to 08 AUG 2024