

VORTAC BYP <b>114.6</b> Chan <b>93</b>	APP CRS <b>214°</b>	Rwy ldg TDZE <b>N/A</b> Apt Elev <b>589</b>
--	------------------------	--

# VOR/DME-A

MCKINNEY NTL (TKI)

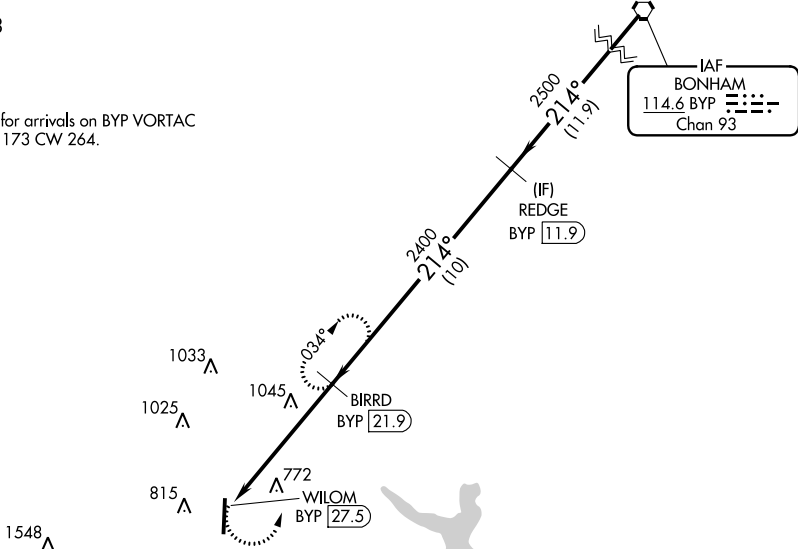
When local altimeter setting not received use Dallas Love Fld altimeter setting and increase all MDA 80 feet and Cats C and D visibility 1/4 mile.

MISSED APPROACH: Climbing left turn to 2400 on BYP VORTAC R-214 to BIRRD/BYP 21.9 DME and hold.

ATIS <b>119.925</b>	REGIONAL APP CON <b>124.3 282.275</b>	MCKINNEY TOWER ★ <b>118.825</b> (CTAF) <b>0</b>	GND CON <b>121.875</b>	CLNC DEL <b>121.35</b> (When twr closed)	UNICOM <b>122.95</b>
------------------------	--	--	---------------------------	--	-------------------------

▲ 1638

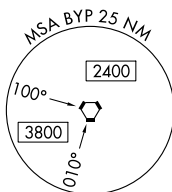
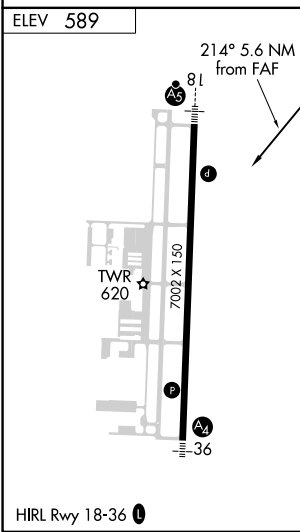
Procedure NA for arrivals on BYP VORTAC airway radials 173 CW 264.



IAF  
BONHAM  
114.6 BYP  
Chan 93

SC-2, 11 JUL 2024 to 08 AUG 2024

SC-2, 11 JUL 2024 to 08 AUG 2024



	2400 BIRRD BYP 21.9	REDGE BYP 11.9	BYP VORTAC	
	WILOM BYP 27.5	BIRRD BYP 21.9	214° 2500	
	2400	214° 2500	214° 2500	
	5.6 NM	10 NM	11.9 NM	
CATEGORY	A	B	C	D
CIRCLING	1360-1 771 (800-1)	1360-1¼ 771 (800-1¼)	1360-2¼ 771 (800-2¼)	1380-2½ 791 (800-2½)