

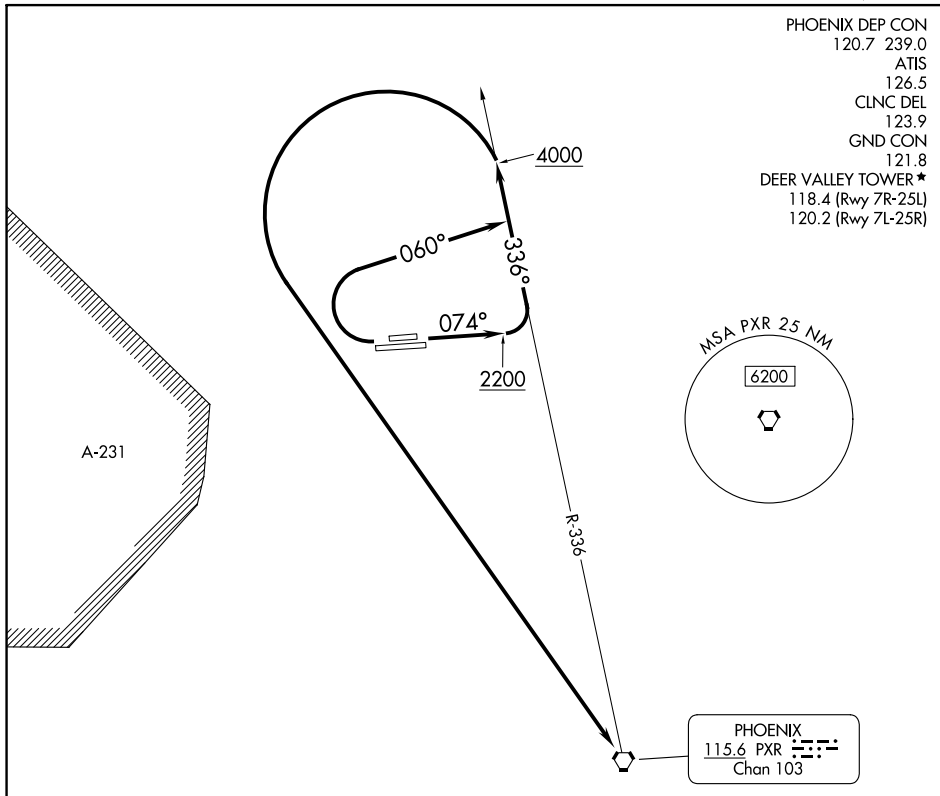
(DVT3.PXR) 23334

AL-6646 (FAA)

PHOENIX DEER VALLEY (DVT)
PHOENIX, ARIZONA

DEER VALLEY THREE DEPARTURE (OBSTACLE)

PHOENIX DEP CON 120.7 239.0
 ATIS 126.5
 CLNC DEL 123.9
 GND CON 121.8
 DEER VALLEY TOWER * 118.4 (Rwy 7R-25L)
 120.2 (Rwy 7L-25R)



SW-4, 11 JUL 2024 to 08 AUG 2024

SW-4, 11 JUL 2024 to 08 AUG 2024

TAKEOFF MINIMUMS

- Rwy 7L: Standard with minimum climb of 400' per NM to 2200.
- Rwy 7R: Standard with minimum climb of 675' per NM to 1800.
- Rwy 25L: Standard with minimum climb of 265' per NM to 2600.
- Rwy 25R: Standard with minimum climb of 285' per NM to 2600.

(CONTINUED ON FOLLOWING PAGE)

NOTE: Chart not to scale.

DEPARTURE ROUTE DESCRIPTION

TAKEOFF RUNWAYS 7L/R: Climb on heading 074° to 2200, then climbing left turn on PXR VORTAC R-336 northwest bound to 4000, thence. . . .

TAKEOFF RUNWAYS 25L/R: Climbing right turn on heading 060° and PXR VORTAC R-336 northwest bound to 4000, thence. . . .

. . . . left turn direct PXR VORTAC.

DEER VALLEY THREE DEPARTURE (OBSTACLE)

(DVT3.PXR) 10AUG23

PHOENIX, ARIZONA
PHOENIX DEER VALLEY (DVT)

DEER VALLEY THREE DEPARTURE (OBSTACLE)

TAKEOFF OBSTACLE NOTES

- Rwy 7L: General utility, vertical point beginning 30' from DER, 120' right of centerline, up to 3' AGL/1479' MSL.
 Vertical point 33' from DER, 125' left of centerline, 2' AGL/1479' MSL.
 Sign 89' from DER, 160' left of centerline, 3' AGL/1480' MSL.
 Pole, Navaid beginning 340' from DER, 315' right of centerline, up to 13' AGL/1488' MSL.
 Tree 665' from DER, 537' left of centerline, 1498' MSL.
 Trees beginning 746' from DER, 499' left of centerline, up to 1499' MSL.
 Tree 913' from DER, 338' left of centerline, 1502' MSL.
 Tree 3574' from DER, 381' left of centerline, 13' AGL/1569' MSL.
 Terrain 3610' from DER, 165' left of centerline, 1579' MSL.
 Terrain, tree beginning 3611' from DER, 253' left of centerline, up to 1587' MSL.
 Vegetation 3686' from DER, 38' right of centerline, 3' AGL/1570' MSL.
 Trees beginning 3693' from DER, 380' left of centerline, up to 10' AGL/1602' MSL.
 Terrain, tree, vegetation beginning 3713' from DER, 9' left of centerline, up to 1624' MSL.
 Trees beginning 3824' from DER, 0' right of centerline, up to 1596' MSL.
- Rwy 7R: Lighting 42' from DER, 484' left of centerline, 1' AGL/1482' MSL.
 Vegetation 146' from DER, 515' left of centerline, 1483' MSL.
 Tree 393' from DER, 602' left of centerline, 1488' MSL.
 Tree, pole beginning 513' from DER, 499' right of centerline, up to 1498' MSL.
 Tree 557' from DER, 266' left of centerline, 1494' MSL.
 Pole 848' from DER, 503' right of centerline, 24' AGL/1507' MSL.
 Building 930' from DER, 712' right of centerline, 1510' MSL.
 Terrain 990' from DER, 359' right of centerline, 1514' MSL.
 Vertical structure 1027' from DER, 602' left of centerline, 1518' MSL.
 Pole 1028' from DER, 601' left of centerline, 39' AGL/1526' MSL.
 Pole, vegetation, tree beginning 1031' from DER, 384' right of centerline, up to 28' AGL/1536' MSL.
 Pole 1137' from DER, 548' left of centerline, 43' AGL/1530' MSL.
 Pole, tree beginning 1149' from DER, 707' left of centerline, up to 48' AGL/1536' MSL.
 Trees beginning 1845' from DER, 878' right of centerline, up to 1558' MSL.
 Trees beginning 1935' from DER, 762' left of centerline, up to 14' AGL/1542' MSL.
 Trees beginning 1950' from DER, 924' right of centerline, up to 1578' MSL.
 Tree, vegetation beginning 1953' from DER, 660' left of centerline, up to 12' AGL/1554' MSL.
 Terrain 2041' from DER, 865' left of centerline, 1579' MSL.
 Terrain, vegetation, tree beginning 2043' from DER, 422' left of centerline, up to 1587' MSL.
 Terrain, tree, vegetation beginning 2145' from DER, 504' left of centerline, up to 1624' MSL.
- Rwy 25L: Tree, fence beginning 19' from DER, 498' right of centerline, up to 1455' MSL.
 Tree 37' from DER, 505' left of centerline, 1461' MSL.
 Tree, building beginning 195' from DER, 505' left of centerline, up to 31' AGL/1465' MSL.
 Tree, building beginning 304' from DER, 506' right of centerline, up to 1469' MSL.
 Tree 421' from DER, 498' right of centerline, 1470' MSL.
 Tree, building, antenna, pole beginning 542' from DER, 502' right of centerline, up to 39' AGL/1475' MSL.
 Tree, building, pole beginning 630' from DER, 505' left of centerline, up to 1467' MSL.
 Pole 1070' from DER, 375' left of centerline, 1468' MSL.
 Poles beginning 1077' from DER, 374' left of centerline, up to 39' AGL/1470' MSL.
 Pole 1126' from DER, 498' right of centerline, 44' AGL/1478' MSL.
 Poles beginning 1183' from DER, 495' left of centerline, up to 41' AGL/1471' MSL.
 Signs beginning 1234' from DER, 356' left of centerline, up to 48' AGL/1478' MSL.
- Rwy 25R: Lighting 30' from DER, 114' left of centerline, 3' AGL/1456' MSL.
 Lighting, general utility beginning 30' from DER, 112' right of centerline, up to 2' AGL/1456' MSL.
 General utility 31' from DER, 112' left of centerline, 4' AGL/1457' MSL.
 Tree 1139' from DER, 798' right of centerline, 1490' MSL.

SW-4, 11 JUL 2024 to 08 AUG 2024

SW-4, 11 JUL 2024 to 08 AUG 2024