

SW-4, 11 JUL 2024 to 08 AUG 2024

**TOP ALTITUDE:  
ASSIGNED BY ATC**

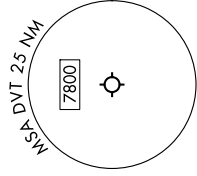
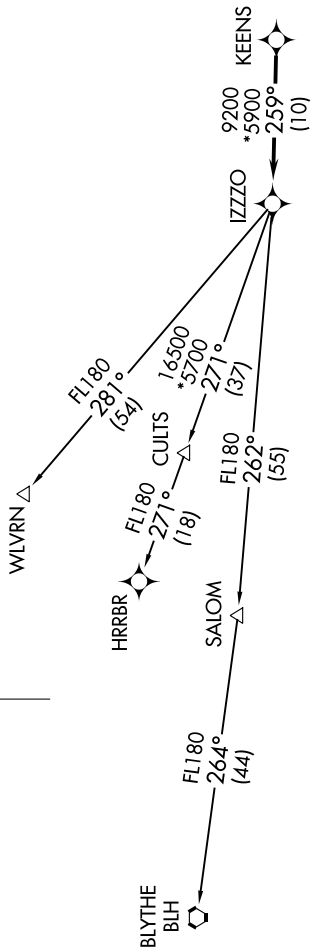
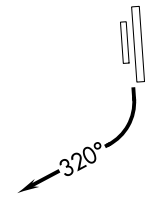
PHOENIX DEP CON  
120.7 239.0  
ATIS  
126.5  
CLNC DEL  
123.9  
GND CON  
121.8  
DEER VALLEY TOWER\*  
118.4 (Rwy 7R-25)  
120.2 (Rwy 7L-25R)

RNAV 1 - GPS.  
RADAR required.

- NOTE: Turbojets and turboprops only.
- NOTE: Aircraft requesting FL220 and below must file BLYTHE Transition.
- NOTE: Aircraft landing LAX, file WLVRN Transition.
- NOTE: Turbojets landing LAX and turboprops landing at LAX: Requesting FL240 and above, file HRRBR Transition.
- NOTE: Aircraft departing KGEU and KGYR ATC assigned only.

**TAKEOFF MINIMUMS**

Rwys 7L/R: NA - Obstacles.  
Rwys 25L/R: Standard with minimum climb of 370'/NM to 4600.



**DEPARTURE ROUTE DESCRIPTION**

**TAKEOFF RUNWAYS 25L/R:** Climbing right turn heading 320° or as assigned by ATC, hence. . . .  
 . . . for RADAR vectors to KEENS, then on track 259° to IZZO, then on (transition).  
 Maintain ATC assigned altitude, expect filed altitude 3 minutes after departure.

- BLYTHE TRANSITION (IZZO8.BLH)
- HRRBR TRANSITION (IZZO8.HRRBR)
- WLVRN TRANSITION (IZZO8.WLVRN)

NOTE: Chart not to scale.

SW-4, 11 JUL 2024 to 08 AUG 2024