

WAAS CH <b>90117</b> <b>W25A</b>	APP CRS <b>254°</b>	Rwy Idg TDZE Apt Elev	<b>7281</b> <b>1475</b> <b>1478</b>
--	------------------------	-----------------------------	---

# RNAV (GPS) RWY 25L

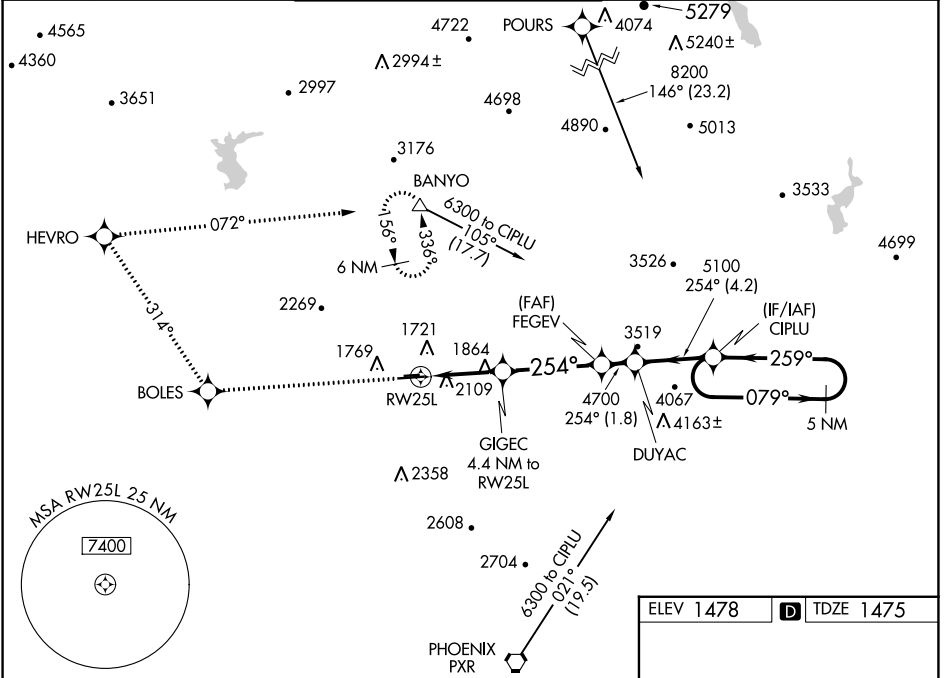
PHOENIX DEER VALLEY (DVT)

RNP APCH - GPS.

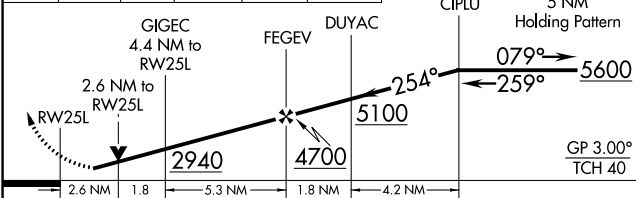
⚠ When VGSI inop, Circling to Rwy 25R NA at night. Circling NA north of Rwy 7R-25L at night. When local altimeter setting not received, use Scottsdale altimeter setting; increase LPV all Cats DA to 1877 feet and LPV all Cats visibility ¼ SM. Increase all MDA 40 feet and Circling Cats B visibility ¼ SM. Rwy 25L helicopter visibility reduction below ¾ SM NA. VDP NA when using Scottsdale altimeter setting.

MISSED APPROACH: Climb to 6000 direct BOLES and on track 314° to HEVRO and right turn on track 072° to BANYO and hold.

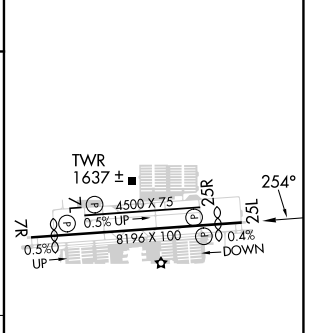
ATIS <b>126.5</b>	PHOENIX APP CON <b>120.7 239.0</b>	DEER VALLEY TOWER * <b>118.4 (070°-250°) (CTAF)</b> <b>120.2 (251°-069°)</b>	GND CON <b>121.8</b>	CLNC DEL <b>123.9</b>	UNICOM <b>122.95</b>
----------------------	---------------------------------------	--	-------------------------	--------------------------	-------------------------



6000	BOLES	tr 314°	HEVRO	BANYO
↑	✦	↷	✦	△
		tr 072°		



ELEV 1478	TDZE 1475
-----------	-----------



CATEGORY	A	B	C	D
LPV DA	1850-1¼		375 (400-1¼)	
LNVA MDA	2360-1¼	885 (900-1¼)	2360-2¾	885 (900-2¾)
CIRCLING	2400-1¼	2420-1¼	2580-3	2700-3
	922 (1000-1¼)	942 (1000-1¼)	1102 (1200-3)	1222 (1300-3)

MIRL Rwy 7L-25R and 7R-25L  
REIL Rwy 7L, 7R, 25L, and 25R

SW-4, 11 JUL 2024 to 08 AUG 2024

SW-4, 11 JUL 2024 to 08 AUG 2024