

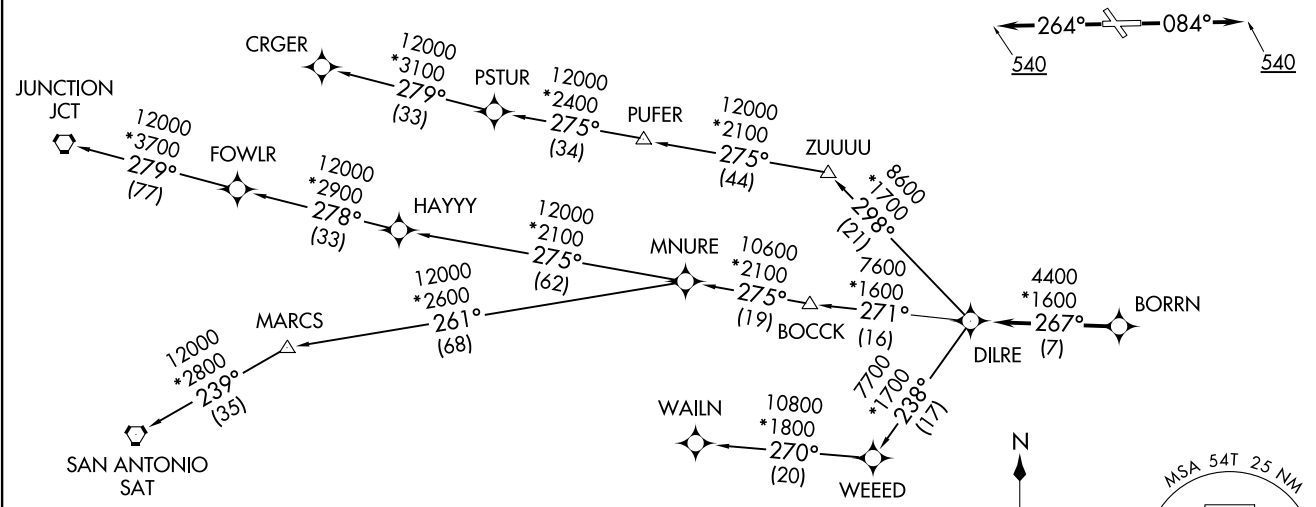
BORRN SIX DEPARTURE (RNAV)  
(BORRN6.BORRN) 30NOV23  
BATOWN, TEXAS  
RWJ AIRPARK (54T)

CTAF  
122.7  
HOUSTON DEP CON  
134.45 284.0

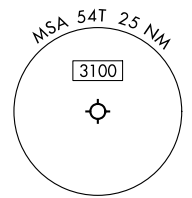
RNAV 1 - DME/DME/IRU or GPS.  
RADAR required.

**TOP ALTITUDE:  
ASSIGNED BY ATC**

**TAKEOFF MINIMUMS**  
Rwys 14, 32: NA - Environmental.  
Rwys 8, 26: Standard with minimum climb  
of 500'/NM to 540.



NOTE: CRGER-TRANSITION ATC assigned only for aircraft departing 54T, AXH, EFD, GLS, HPY, IWS, LBX, LVJ, SGR, TME, T00, T41.



NOTE: Chart not to scale.

(NARRATIVE ON FOLLOWING PAGE)

(BORRN6.BORRN) 23334  
AL6674 (FAA)  
RWJ AIRPARK (54T)  
BATOWN, TEXAS

# BORRN SIX DEPARTURE (RNAV)



## DEPARTURE ROUTE DESCRIPTION

TAKEOFF RUNWAY 8: Climb on heading 084° to 540, for RADAR vectors to BORRN, thence. . . .

TAKEOFF RUNWAY 26: Climb on heading 264° to 540, for RADAR vectors to BORRN, thence. . . .

. . . .on track 267° to DILRE, then on (transition). Maintain ATC assigned altitude. Expect filed altitude 10 minutes after departure.

CRGER TRANSITION (BORRN6.CRGER)

JUNCTION TRANSITION (BORRN6.JCT)

MNURE TRANSITION (BORRN6.MNURE)

SAN ANTONIO TRANSITION (BORRN6.SAT)

WAILN TRANSITION (BORRN6.WAILN)

SC-5, 11 JUL 2024 to 08 AUG 2024

SC-5, 11 JUL 2024 to 08 AUG 2024