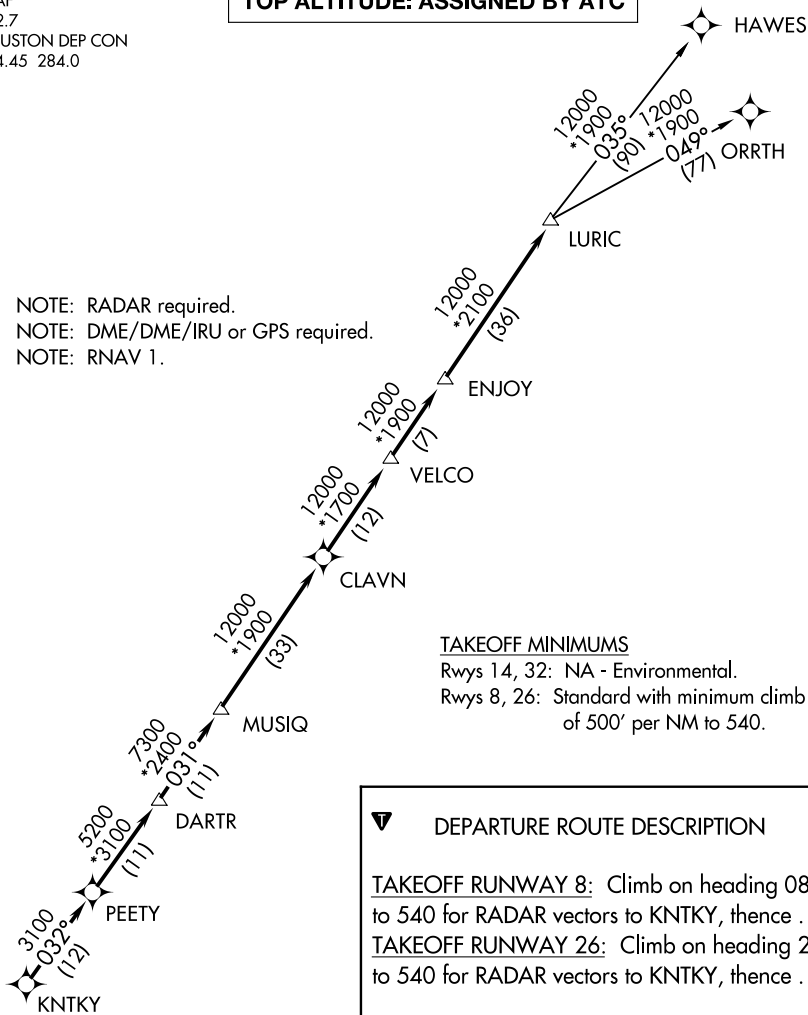


# LURIC EIGHT DEPARTURE (RNAV)

CTAF  
122.7  
HOUSTON DEP CON  
134.45 284.0

**TOP ALTITUDE: ASSIGNED BY ATC**

NOTE: RADAR required.  
NOTE: DME/DME/IRU or GPS required.  
NOTE: RNAV 1.



### TAKEOFF MINIMUMS

Rwys 14, 32: NA - Environmental.  
Rwys 8, 26: Standard with minimum climb  
of 500' per NM to 540.

**DEPARTURE ROUTE DESCRIPTION**

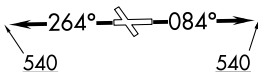
TAKEOFF RUNWAY 8: Climb on heading 084° to 540 for RADAR vectors to KNTKY, then . . .

TAKEOFF RUNWAY 26: Climb on heading 264° to 540 for RADAR vectors to KNTKY, then . . .

. . . on track 032° to PEETY, then on track 032° to DARTR, then on track 031° to MUSIQ, then on track 031° to CLAVN, then on track 031° to VELCO, then on track 031° to ENJOY, then on track 031° to LURIC, then on (transition). Maintain ATC assigned altitude. Expect filed altitude 10 minutes after departure.

HAWES TRANSITION (LURIC8.HAWES)

ORRTH TRANSITION (LURIC8.ORRTH)



NOTE: Chart not to scale.

SC-5, 11 JUL 2024 to 08 AUG 2024

SC-5, 11 JUL 2024 to 08 AUG 2024