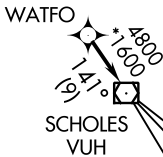
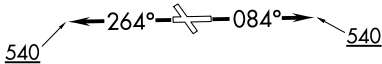


# WATFO SIX DEPARTURE (RNAV)

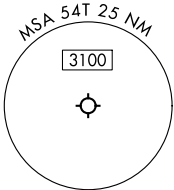
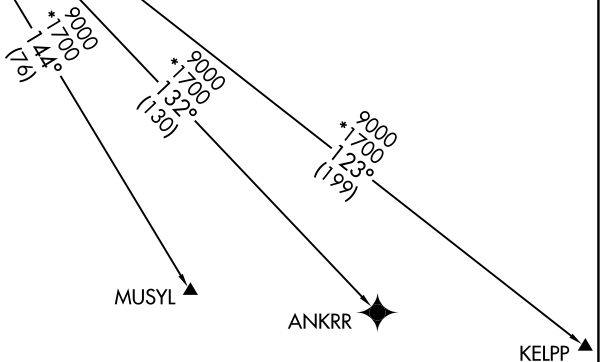
RNAV 1 - DME/DME/IRU or GPS.  
RADAR required.

**TOP ALTITUDE:  
ASSIGNED BY ATC**

CTAF  
122.7  
HOUSTON DEP CON  
134.45 284.0



**TAKEOFF MINIMUMS:**  
Rwy 14, 32: NA - Environmental.  
Rwy 8, 26: Standard with minimum climb  
of 500' /NM to 540.



NOTE: Chart not to scale.



## DEPARTURE ROUTE DESCRIPTION

TAKEOFF RUNWAY 8: Climb on heading 084° to 540, for RADAR vectors to WATFO, thence. . . .  
TAKEOFF RUNWAY 26: Climb on heading 264° to 540, for RADAR vectors to WATFO, thence. . . .

. . . on track 141° to VUH VOR/DME, then on (transition). Maintain ATC assigned altitude.  
Expect filed altitude 10 minutes after departure.

- ANKRR TRANSITION (WATFO6.ANKRR)
- KELPP TRANSITION (WATFO6.KELPP)
- MUSYL TRANSITION (WATFO6.MUSYL)