

(SEEMS1 .SEEMS) 23166

AL-6675 (FAA)

HALF MOON BAY (HAF)

# SEEMS ONE DEPARTURE (OBSTACLE) (RNAV)

HALF MOON BAY, CALIFORNIA

RNAV 1 - GPS

NORCAL DEP CON  
135.1 307.2

### TAKEOFF MINIMUMS

Rwy 30: Standard with minimum climb of 500' per NM to 566.

### TAKEOFF OBSTACLE NOTES

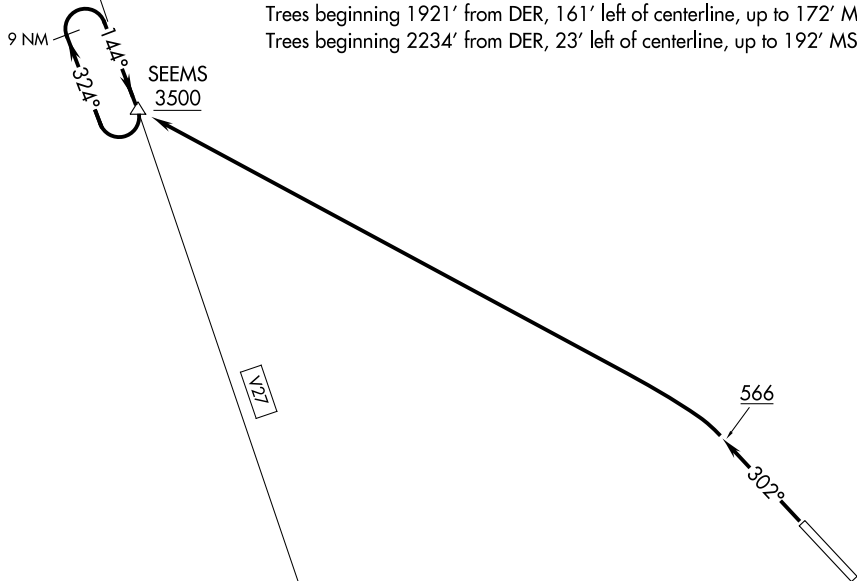
Rwy 30: Trees beginning 1248' from DER, 83' left of centerline, up to 160' MSL.

Tree 1263' from DER, 628' right of centerline, 156' MSL.

Trees and poles beginning 1490' from DER, 102' right of centerline, up to 160' MSL.

Trees beginning 1921' from DER, 161' left of centerline, up to 172' MSL.

Trees beginning 2234' from DER, 23' left of centerline, up to 192' MSL.



SW-2, 11 JUL 2024 to 08 AUG 2024

SW-2, 11 JUL 2024 to 08 AUG 2024

NOTE: Chart not to scale.

### DEPARTURE ROUTE DESCRIPTION

TAKEOFF RUNWAY 30: Climb on heading 302° to 566, then climbing left turn direct SEEMS, continue climb in SEEMS holding pattern to at/above 3500 before proceeding on course.

SEEMS ONE DEPARTURE (OBSTACLE) (RNAV)

HALF MOON BAY, CALIFORNIA

(SEEMS1 .SEEMS) 15JUN23

HALF MOON BAY (HAF)