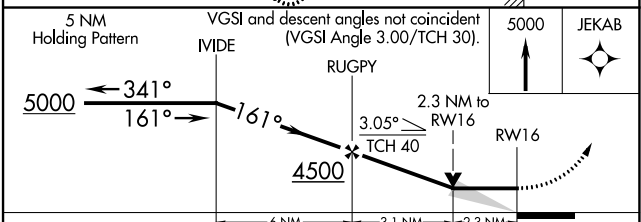
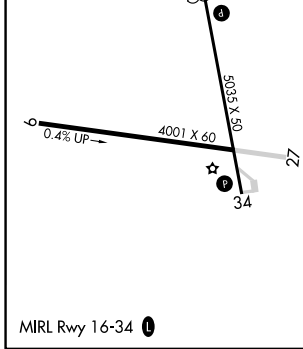
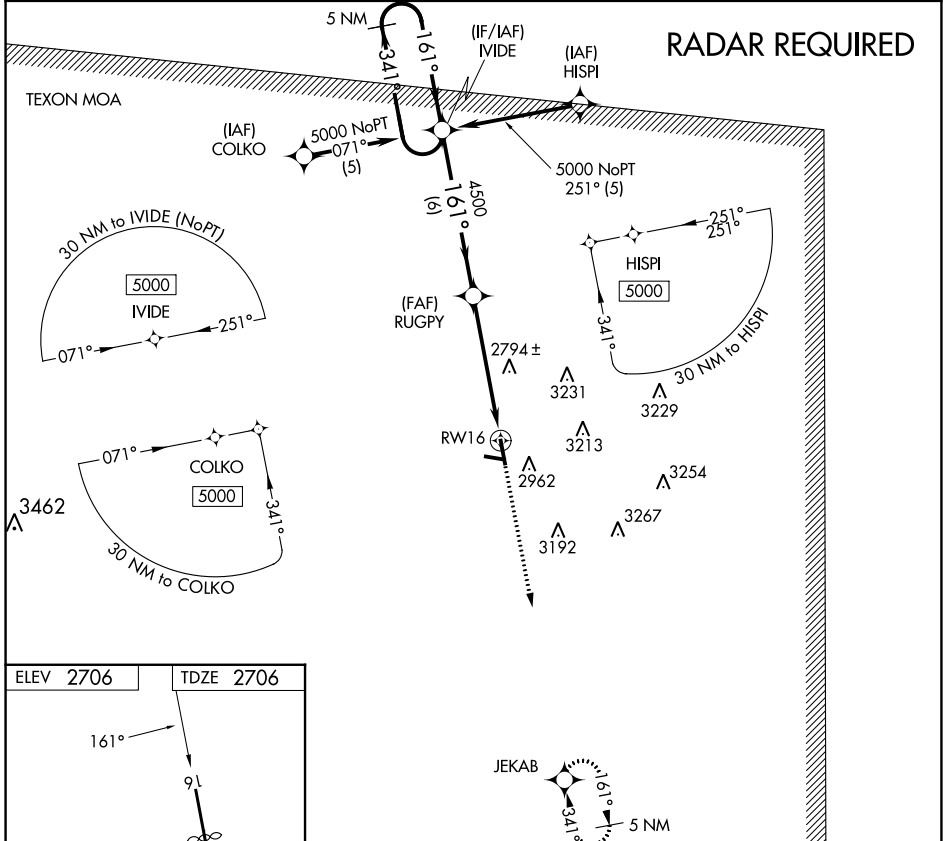


APP CRS	Rwy Idg	4030
161°	TDZE	2706
	Apt Elev	2706

RNAV (GPS) RWY 16

REAGAN COUNTY (E41)

RNP APCH		MISSED APPROACH: Climb to 5000 direct JEKAB and hold.
AWOS-3PT 118.4	FORT WORTH CENTER 126.15 322.55	CTAF 122.9



CATEGORY	A	B	C	D
LNAV MDA	3460-1 754 (800-1)	3460-1¼ 754 (800-1¼)	3460-2¼ 754 (800-2¼)	NA
CIRCLING	3460-1 754 (800-1)	3460-1¼ 754 (800-1¼)	3460-2¼ 754 (800-2¼)	NA

SC-3, 11 JUL 2024 to 08 AUG 2024

SC-3, 11 JUL 2024 to 08 AUG 2024