

| | | | |
|--|------------------------|-----------------------------|---|
| WAAS CH 53719 W02A | APP CRS 022° | Rwy Idg TDZE Apt Elev | 4400 1068 1068 |
|--|------------------------|-----------------------------|---|

RNAV (GPS) RWY 2

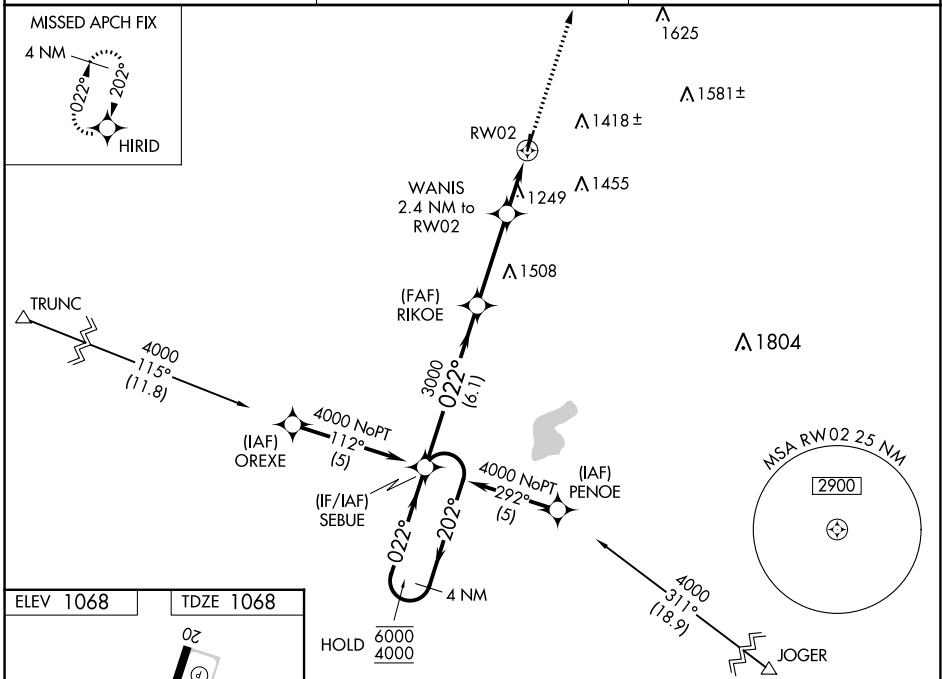
GRIMES FLD (I74)

RNP APCH.

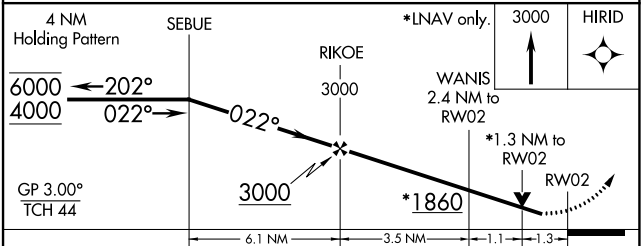
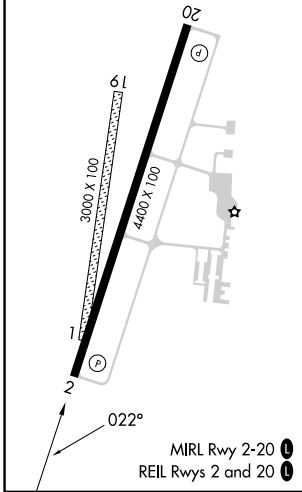
▼ Baro-VNAV and VDP NA when using Springfield altimeter setting. Rwy 2 helicopter visibility reduction below 3/4 SM NA. For uncompensated Baro-VNAV systems, LNAV/VNAV NA below -17°C or above 54°C. When local altimeter setting not received, use Springfield altimeter setting and increase all DAs 44 feet, all MDAs 60 feet, increase LNAV/VNAV all Cats visibility 1/4 SM, and increase Circling Cat C visibility 1/4 SM. Circling NA to Rwy 1 and 19.

▲ MISSED APPROACH: Climb to 3000 direct HIRID and hold.

| | | |
|--------------------------|---|---------------------------------|
| AWOS-3 118,325 | COLUMBUS APP CON 134.45 294.5 | UNICOM 122.7 (CTAF) 0 |
|--------------------------|---|---------------------------------|



| | |
|-----------|-----------|
| ELEV 1068 | TDZE 1068 |
|-----------|-----------|



| CATEGORY | A | B | C | D |
|-------------------|-----------------------|-----------------------|---------------------------|----|
| LPV DA | 1318-1 | 250 (300-1) | | NA |
| LNAV/VNAV DA | 1501-1 1/2 | 433 (500-1 1/2) | | NA |
| LNAV MDA | 1500-1 | 432 (500-1) | 1500-1/4 432 (500-1/4) | NA |
| C CIRCLING | 1580-1 512 (600-1) | 1780-1 712 (800-1) | 1800-2 732 (800-2) | NA |

EC-2, 11 JUL 2024 to 08 AUG 2024

EC-2, 11 JUL 2024 to 08 AUG 2024