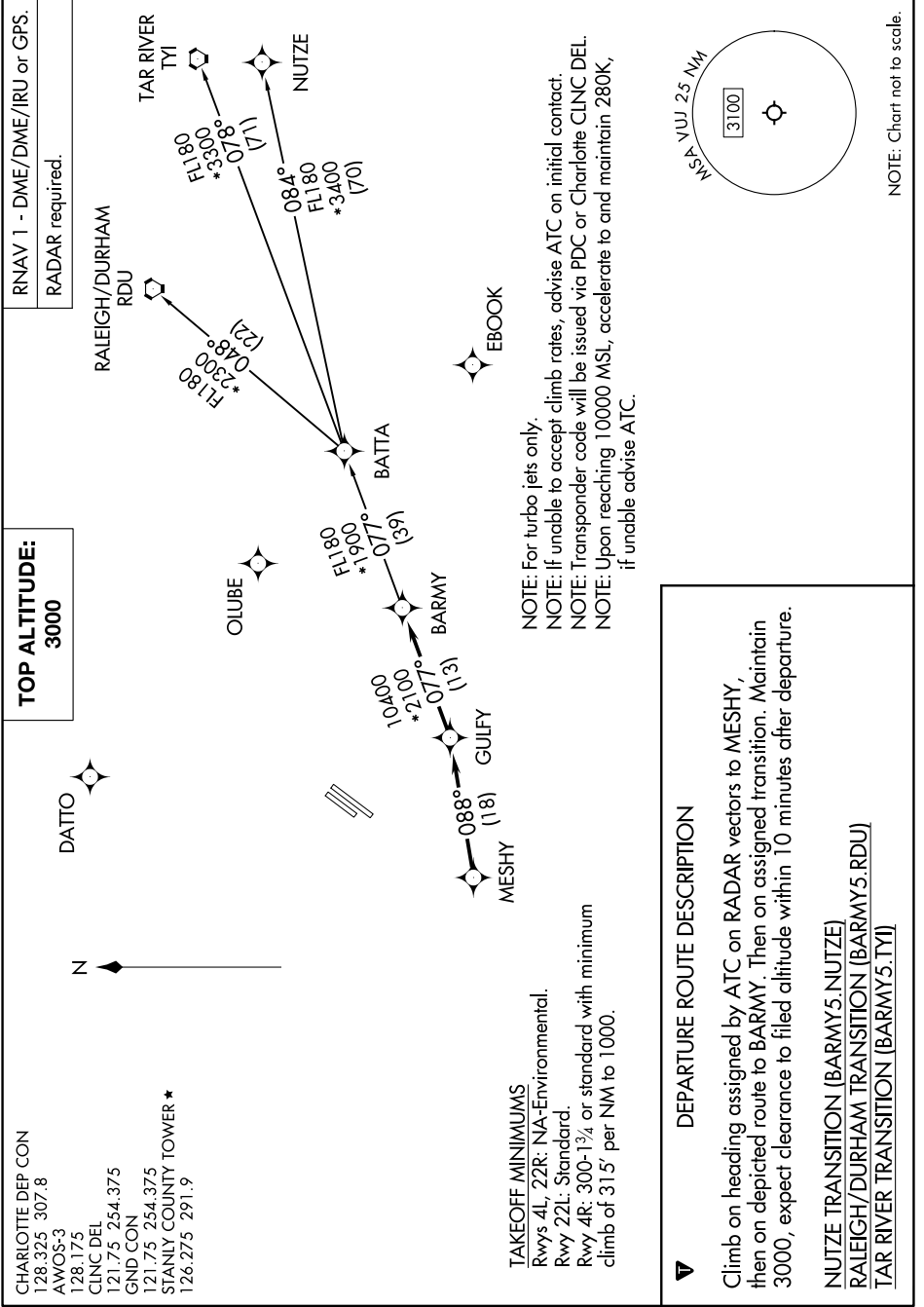


BARMY FIVE DEPARTURE (RNAV)

SE-2, 11 JUL 2024 to 08 AUG 2024



CHARLOTTE DEP CON
128.325 307.8
AWOS-3
128.175
CINC DEL
121.75 254.375
GND CON
121.75 254.375
STANLY COUNTY TOWER ★
126.275 291.9

TOP ALTITUDE:
3000

RNAV 1 - DME/DME/IRU or GPS.
RADAR required.

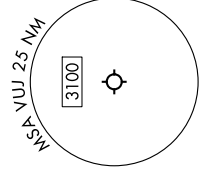
TAKEOFF MINIMUMS
Rwys 4L, 22R: NA-Environmental.
Rwy 22L: Standard.
Rwy 4R: 300-1 $\frac{3}{4}$ or standard with minimum
climb of 315' per NM to 1000.

NOTE: For turbo jets only.
NOTE: If unable to accept climb rates, advise ATC on initial contact.
NOTE: Transponder code will be issued via PDC or Charlotte CLNC DEL.
NOTE: Upon reaching 10000 MSL, accelerate to and maintain 280K, if unable advise ATC.

DEPARTURE ROUTE DESCRIPTION

Climb on heading assigned by ATC on RADAR vectors to MESHY, then on depicted route to BARMY. Then on assigned transition. Maintain 3000, expect clearance to filed altitude within 10 minutes after departure.

- NUIITZE TRANSITION (BARMY5.NUIITZE)
- RALEIGH/DURHAM TRANSITION (BARMY5.RDU)
- TAR RIVER TRANSITION (BARMY5.TYI)



NOTE: Chart not to scale.