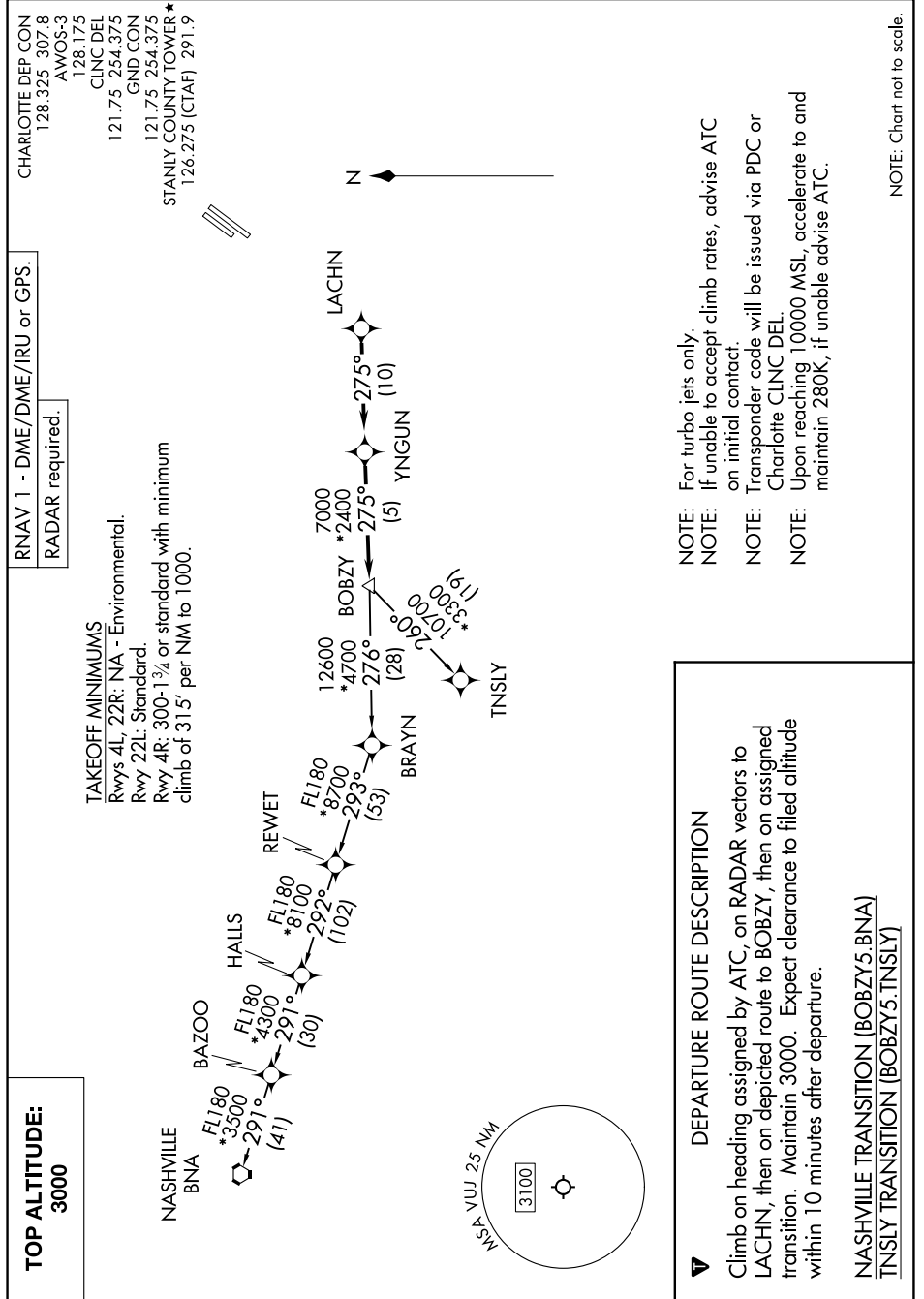


BOBZY FIVE DEPARTURE (RNAV)

SE-2, 11 JUL 2024 to 08 AUG 2024



RNAV 1 - DME/DME/IRU or GPS.
RADAR required.

TAKEOFF MINIMUMS
Rwys 4L, 22R: NA - Environmental.
Rwy 22L: Standard.
Rwy 4R: 300-1 3/4 or standard with minimum
climb of 31.5' per NM to 1000.

TOP ALTITUDE:
3000

NOTE: For turbo jets only.
NOTE: If unable to accept climb rates, advise ATC on initial contact.
NOTE: Transponder code will be issued via PDC or Charlotte CLNC DEL.
NOTE: Upon reaching 10000 MSL, accelerate to and maintain 280K, if unable advise ATC.

DEPARTURE ROUTE DESCRIPTION
Climb on heading assigned by ATC, on RADAR vectors to LACHN, then on depicted route to BOBZY, then on assigned transition. Maintain 3000. Expect clearance to filed altitude within 10 minutes after departure.
NASHVILLE TRANSITION (BOBZY5.BNA)
TNSLY TRANSITION (BOBZY5.TNSLY)

NOTE: Chart not to scale.

SE-2, 11 JUL 2024 to 08 AUG 2024