

CHARLOTTE DEP CON  
 128.325 307.8  
 AWOS-3  
 128.175  
 CLNC DEL  
 121.75 254.375  
 GND CON  
 121.75 254.375  
 STANLY COUNTY TOWER \*  
 126.275 291.9

RADAR and DME required.

**TOP ALTITUDE:  
 3000**

PULASKI  
 116.8 PSK  
 Chan 115

BARRETS MOUNTAIN  
 113.75 BZM  
 Chan 84(Y)

LIBERTY  
 113.0 LB  
 Chan 77

SUGARLOAF MOUNTAIN  
 112.2 SUG  
 Chan 59

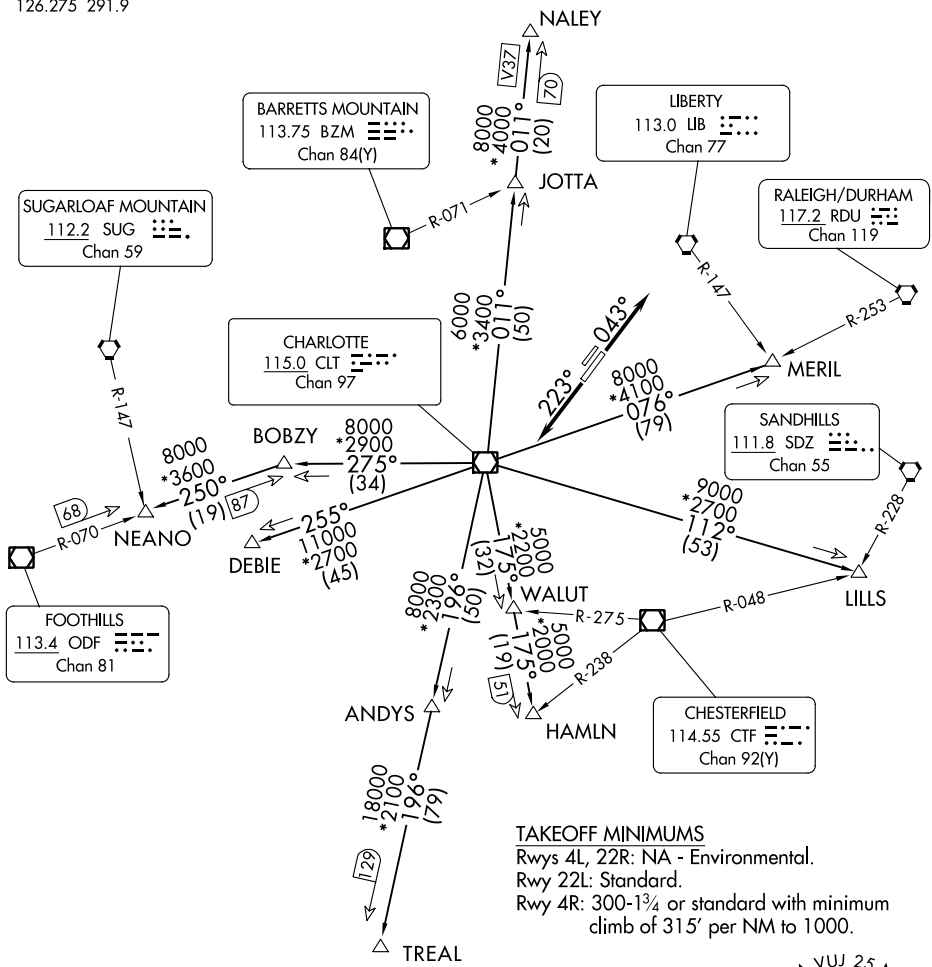
RALEIGH/DURHAM  
 117.2 RDU  
 Chan 119

CHARLOTTE  
 115.0 CLT  
 Chan 97

SANDHILLS  
 111.8 SDZ  
 Chan 55

FOOTHILLS  
 113.4 ODF  
 Chan 81

CHESTERFIELD  
 114.55 CTF  
 Chan 92(Y)



**TAKEOFF MINIMUMS**  
 Rwy 4L, 22R: NA - Environmental.  
 Rwy 22L: Standard.  
 Rwy 4R: 300-1 $\frac{3}{4}$  or standard with minimum  
 climb of 315' per NM to 1000.

NOTE: For turbo jet aircraft only.  
 NOTE: Upon reaching 10000 MSL, accelerate to  
 and maintain 280K, if unable advise ATC.  
 NOTE: Transponder code will be issued via Charlotte  
 clearance delivery.

NOTE: Chart not to scale.

(CONTINUED ON FOLLOWING PAGE)

SE-2, 11 JUL 2024 to 08 AUG 2024

SE-2, 11 JUL 2024 to 08 AUG 2024

# KERMIT FOUR DEPARTURE



## DEPARTURE ROUTE DESCRIPTION

TAKEOFF RUNWAY 4R: Climb on heading 043°, thence . . . .

TAKEOFF RUNWAY 22L: Climb on heading 223°, thence . . . .

. . . . on RADAR vectors to intercept filed/assigned transition or enroute fix/navaid.  
Maintain 3000, expect filed altitude/flight level 10 minutes after departure.

ANDYS TRANSITION (KER4.ANDYS): From over CLT VOR/DME on CLT R-196 to ANDYS.

DEBIE TRANSITION (KER4.DEBIE): From over CLT VOR/DME on CLT R-255 to DEBIE.

HAMLN TRANSITION (KER4.HAMLN): From over CLT VOR/DME on CLT R-175 to HAMLN.

JOTTA TRANSITION (KER4.JOTTA): From over CLT VOR/DME on CLT R-011 to JOTTA.

LILLS TRANSITION (KER4.LILLS): From over CLT VOR/DME on CLT R-112 to LILLS.

MERIL TRANSITION (KER4.MERIL): From over CLT VOR/DME on CLT R-076 to MERIL.

NALEY TRANSITION (KER4.NALEY): From over CLT VOR/DME on CLT R-011 to NALEY.

NEANO TRANSITION (KER4.NEANO): From over CLT VOR/DME on CLT R-275 to BOBZY,  
then on ODF R-070 to NEANO.

TREAL TRANSITION (KER4.TREAL): From over CLT VOR/DME on CLT R-196 to TREAL.

SE-2, 11 JUL 2024 to 08 AUG 2024

SE-2, 11 JUL 2024 to 08 AUG 2024