

VOR/DME SAE 110.2 Chan 39	APP CRS 166°	Rwy Idg 4797 TDZE 3423 Apt Elev 3425
---	------------------------	---

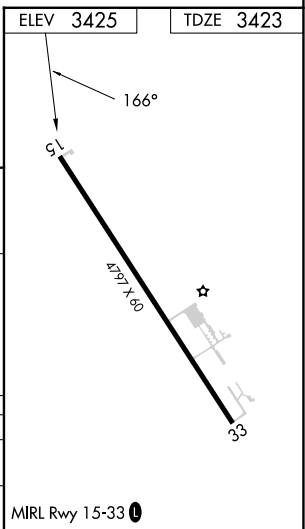
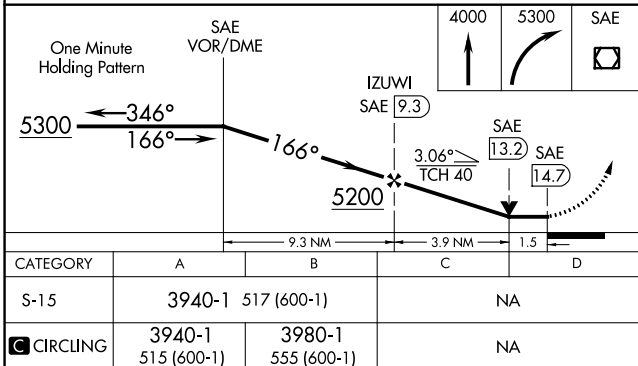
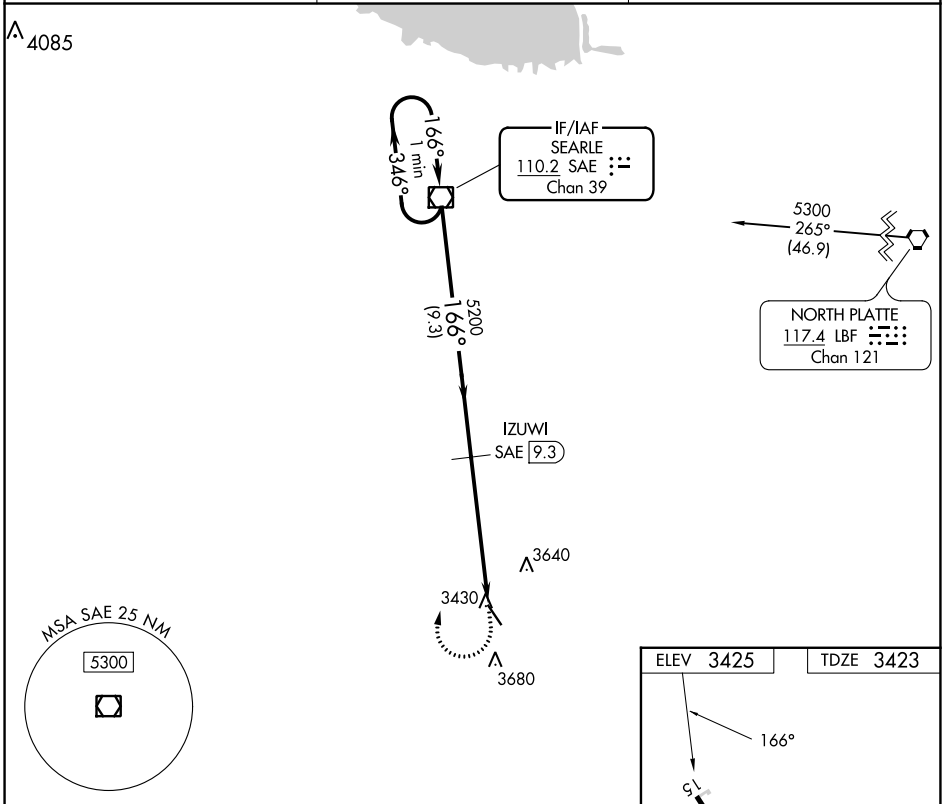
VOR/DME RWY 15

GRANT MUNI (GGF)

⚠ When local altimeter not received, use Ogallala altimeter setting and increase all MDA 60 feet. VDP NA with Ogallala altimeter setting.

⚠ MISSED APPROACH: Climb to 4000 then climbing right turn to 5300 direct SAE VOR/DME and hold.

AWOS-3PT 118.025	DENVER CENTER 132.7 397.85	UNICOM 122.8 (CTAF) 📶
----------------------------	--------------------------------------	--



NC-2, 11 JUL 2024 to 08 AUG 2024

NC-2, 11 JUL 2024 to 08 AUG 2024