

|             |          |             |
|-------------|----------|-------------|
| APP CRS     | Rwy Idg  | <b>7000</b> |
| <b>259°</b> | TDZE     | <b>5537</b> |
|             | Apt Elev | <b>5537</b> |

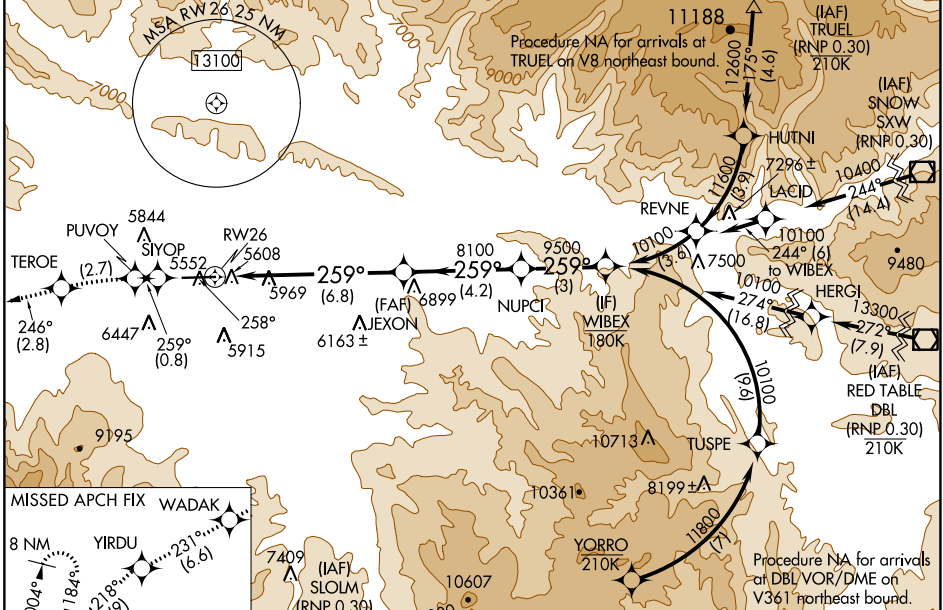
# RNAV (RNP) Z RWY 26

RIFLE GARFIELD COUNTY (R.I.L.)

When VGSJ inoperative, procedure NA at night. RF required. GPS required. Missed approach requires RNP less than 1.0. For uncompensated Baro-VNAV systems, procedure NA below -24°C (-11°F) or above 38°C (100°F). \* Missed approach requires minimum climb of 398 feet per NM to 9100.

**MISSED APPROACH:** Climb to 13000 on track 258° to SIYOP and track 259° to PUVOY left turn to TEROE and track 246° to WADAK and track 231° to YIRDU and track 218° to WOKPA and hold, continue climb-in-hold to 13000.

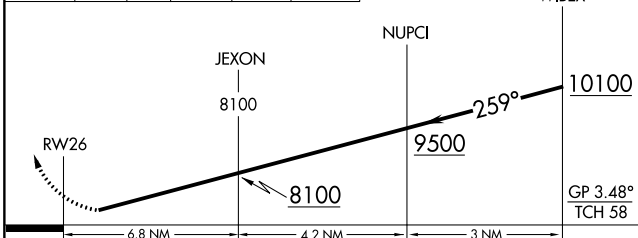
|                        |  |                               |
|------------------------|--|-------------------------------|
| ASOS<br><b>135,275</b> | DENVER CENTER<br><b>134.95 327.075</b> | UNICOM<br><b>122.8 (CTAF)</b> |
|------------------------|--|-------------------------------|



SW-1, 11 JUL 2024 to 08 AUG 2024

SW-1, 11 JUL 2024 to 08 AUG 2024

|           |           |
|-----------|-----------|
| ELEV 5537 | TDZE 5537 |
|-----------|-----------|



| CATEGORY     | A       | B            | C | D  |
|--------------|---------|--------------|---|----|
| RNP 0.10 DA* | 5955-1  | 418 (500-1)  |   | NA |
| RNP 0.30 DA  | 6387-2½ | 850 (900-2½) |   | NA |

## AUTHORIZATION REQUIRED

HIRL Rwy 8-26  
REIL Rws 8