

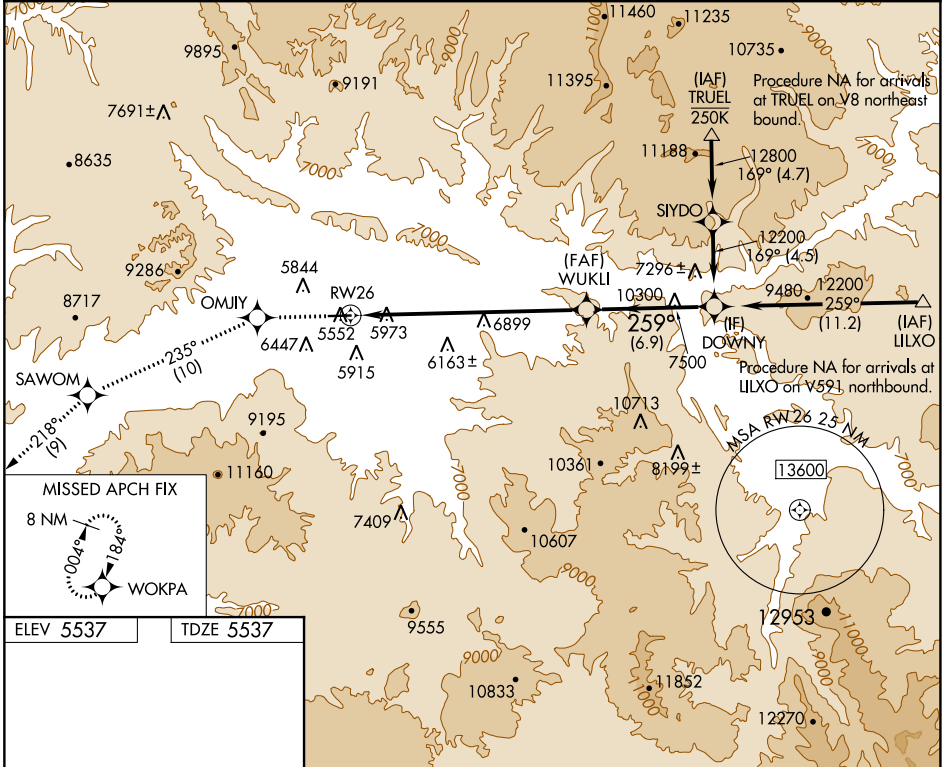
WAAS CH <b>93708</b> <b>W26A</b>	APP CRS <b>259°</b>	Rwy Idg TDZE Apt Elev	<b>7000</b> <b>5537</b> <b>5537</b>
--	------------------------	-----------------------------	---

# RNAV (GPS) X RWY 26

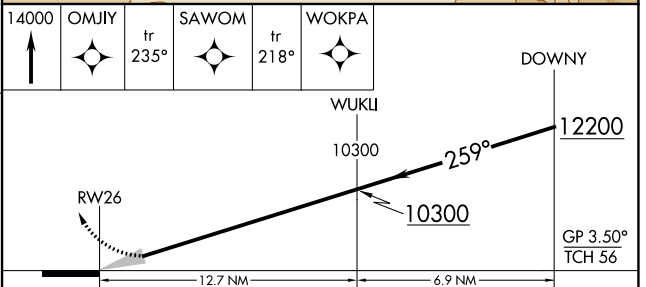
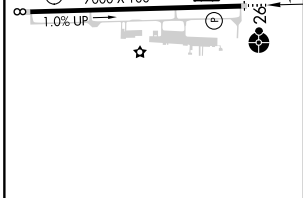
RIFLE GARFIELD COUNTY(R.I.L)

RNP APCH - GPS.	ODALS	MISSED APPROACH: Climb to 14000 direct OMJIY and on track 235° to SAWOM and on track 218° to WOKPA and hold, continue climb-in-hold to 14000. Missed approach requires a minimum climb gradient of 290 feet per NM to 9600 feet; if unable to meet climb gradient, see RNAV (GPS) W RWY 26.
NA -14°C For inop ALS, increase LPV all Cats visibility to 2 1/2 SM.		

ASOS <b>135.275</b>	DENVER CENTER <b>134.95 327.075</b>	UNICOM <b>122.8 (CTAF) 0</b>
------------------------	--	---------------------------------



ELEV 5537	TDZE 5537
-----------	-----------



HIRL Rwy 8-26 0	REIL Rwy 8 0	CATEGORY	A	B	C	D
		LPV DA	6300-2 763 (800-2)			

SW-1, 11 JUL 2024 to 08 AUG 2024

SW-1, 11 JUL 2024 to 08 AUG 2024