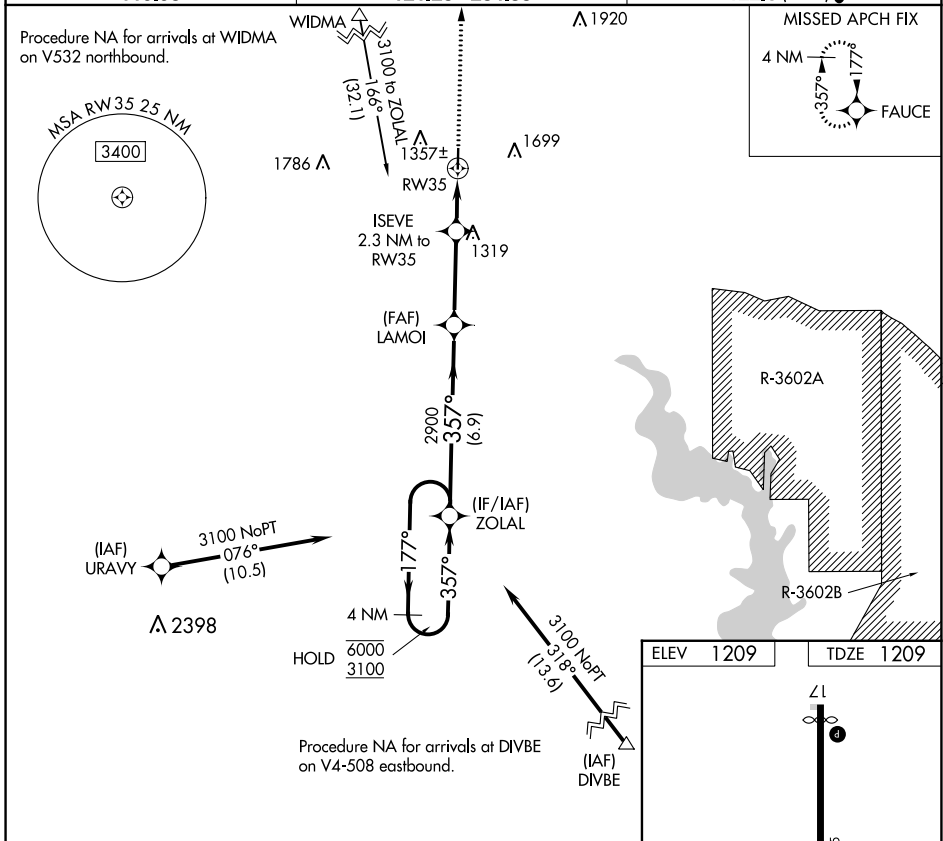


APP CRS	Rwy Idg	<b>3970</b>
<b>357°</b>	TDZE	<b>1209</b>
	Apt Elev	<b>1209</b>

# RNAV (GPS) RWY 35

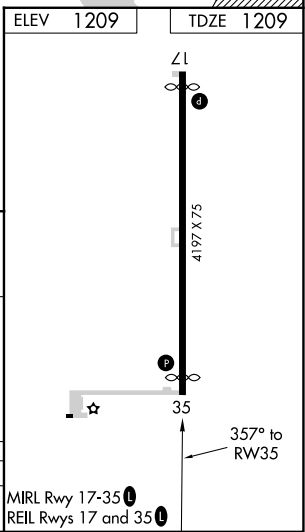
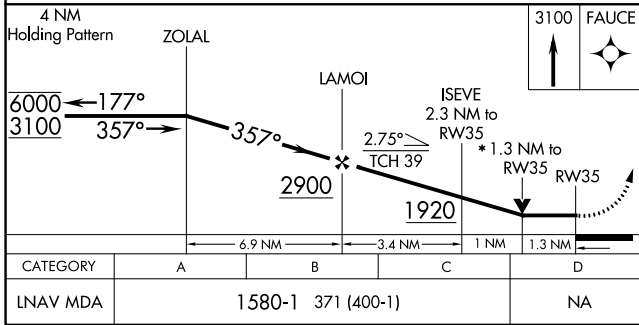
CLAY CENTER MUNI (CYW)

RNP APCH.		MISSED APPROACH: Climb to 3100 direct FAUCE and hold.
<p><b>NA</b> Rwy 35 helicopter visibility reduction below <math>\frac{3}{4}</math> SM NA. VDP NA when using Salina altimeter setting. When local altimeter setting not received, use Salina altimeter setting and increase all MDA 120 feet and LNAV Cat C visibility <math>\frac{3}{8}</math> SM.</p>		
AWOS-3T	MARSHALL AAF APP CON *	UNICOM
<b>119.95</b>	<b>121.25 254.35</b>	<b>122.8 (CTAF)</b>



NC-2, 11 JUL 2024 to 08 AUG 2024

NC-2, 11 JUL 2024 to 08 AUG 2024



CATEGORY	A	B	C	D	
LNAV MDA	1580-1	371 (400-1)		NA	