

APP CRS	Rwy Idg	<b>3060</b>
<b>013°</b>	TDZE	<b>1034</b>
	Apt Elev	<b>1042</b>

# RNAV (GPS) RWY 1

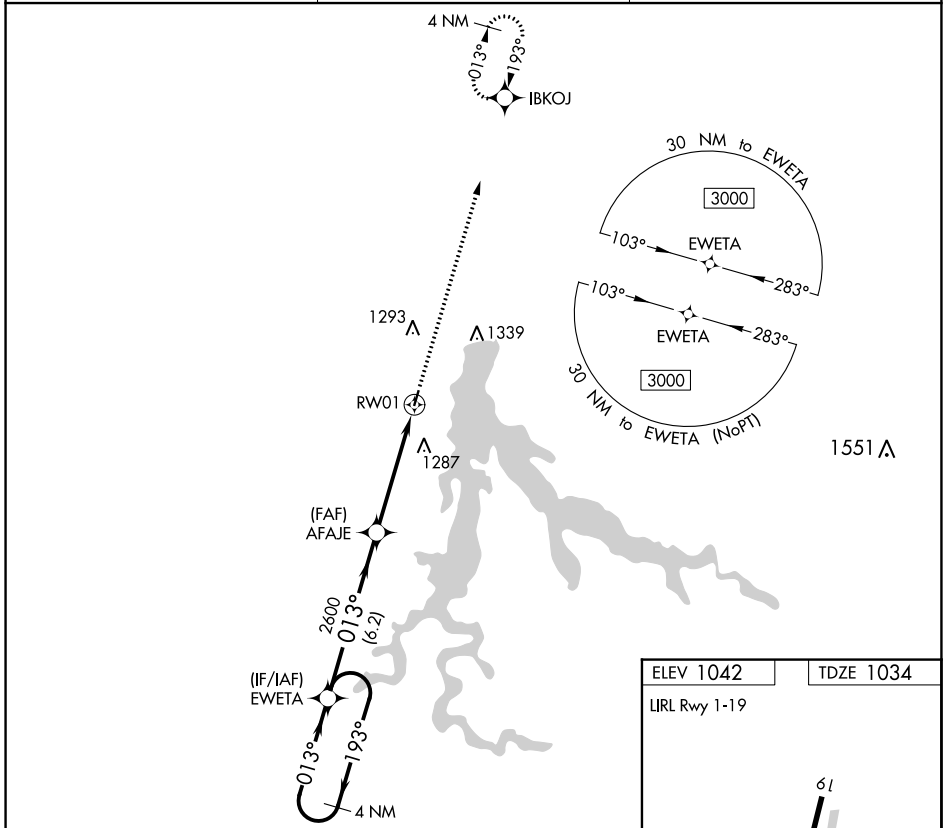
STOCKTON MUNI (MO3)

**▽** Use Nevada altimeter setting; when not received, use Springfield altimeter setting and increase all MDA 40 feet. DME/DME RNP-0.3 NA. Helicopter visibility reduction below 1 SM NA. Procedure NA at night.

**△** NA

MISSED APPROACH: Climb to 3000 direct IBKOJ and hold.

NVD AWOS-3PT <b>119.175</b>	SPRINGFIELD APP CON <b>124.95</b>	CTAF <b>122.9</b>
--------------------------------	--------------------------------------	----------------------

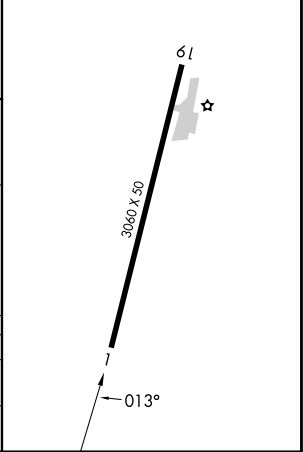
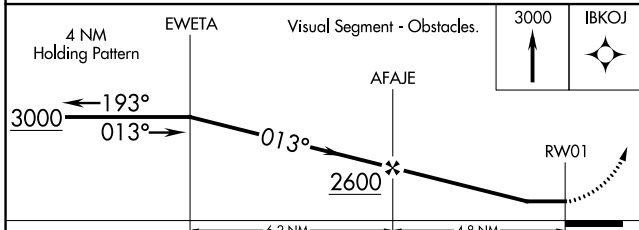


NC-3, 11 JUL 2024 to 08 AUG 2024

NC-3, 11 JUL 2024 to 08 AUG 2024

ELEV 1042	TDZE 1034
-----------	-----------

LIRL Rwy 1-19



CATEGORY	A	B	C	D
LNVA MDA	1600-1	566 (600-1)		NA
CIRCLING	1600-1 558 (600-1)	1700-1 658 (700-1)		NA