

LOC/DME I-JUH 109.35 Chan 30(Y)	APP CRS 276°	Rwy Idg TDZE Apt Elev 5002 3142 3178
---	------------------------	--

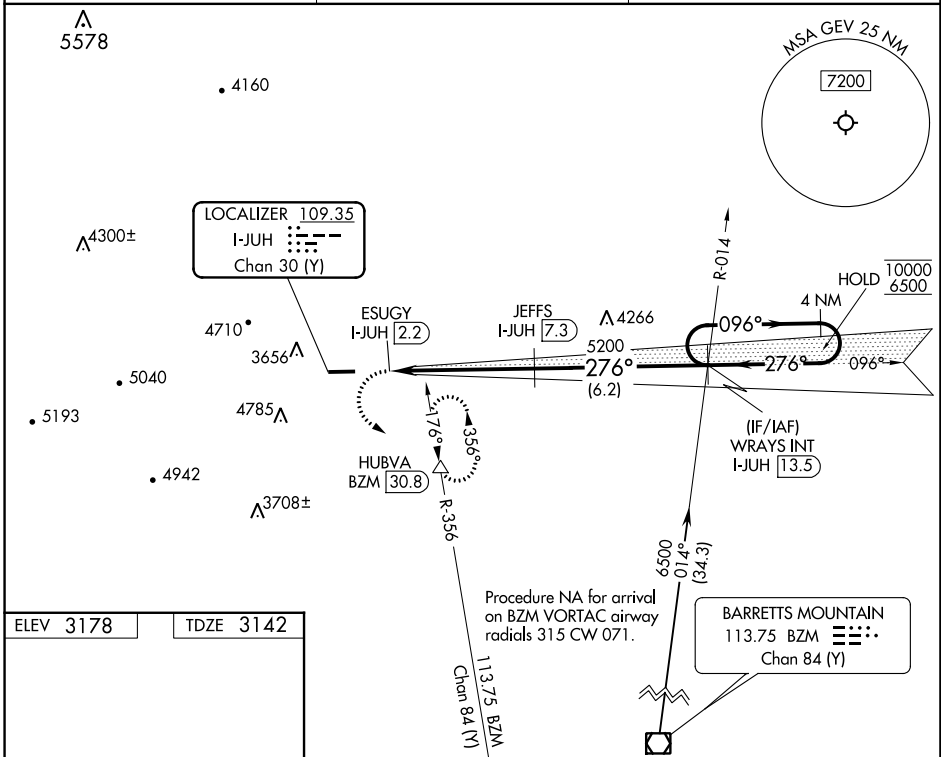
LOC RWY 28
ASHE COUNTY (GEV)

DME required.

▼ Circling to Rwy 10 NA at night.

▲ MISSED APPROACH: Climbing left turn to 7200 on heading 096° and on BZM VOR/DME R-356 to HUBVA/BZM 30.8 DME and hold, continue climb-in-hold to 7200.

AWOS-3 120.675	ATLANTA CENTER 125.15 263.0	UNICOM 122.8 (CTAF) 0
--------------------------	---------------------------------------	---------------------------------



ELEV 3178	TDZE 3142
-----------	-----------

7200 hdg 096° 5002 X 75 -1.8% UP 276°	BZM R-356	HUBVA	4 NM Holding Pattern	
	ESUGY I-JUH [2.2]	JEFFS I-JUH [7.3]	WRAYS INT I-JUH [13.5]	
1.3	1.3 NM	3.9 NM	6.2 NM	
CATEGORY	A	B	C	D
S-LOC 28	3980-1½	838 (900-1½)	3980-2½	838 (900-2½)
CIRCLING	4280-1½	1102 (1200-1½)	5140-3 1962 (2000-3)	5180-3 2002 (2100-3)

SE-2, 11 JUL 2024 to 08 AUG 2024

SE-2, 11 JUL 2024 to 08 AUG 2024