

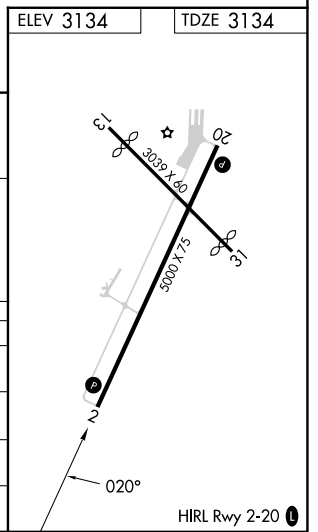
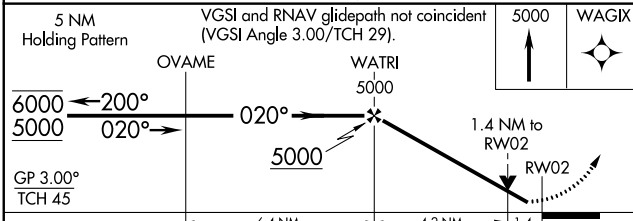
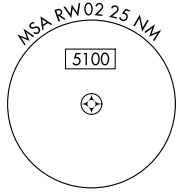
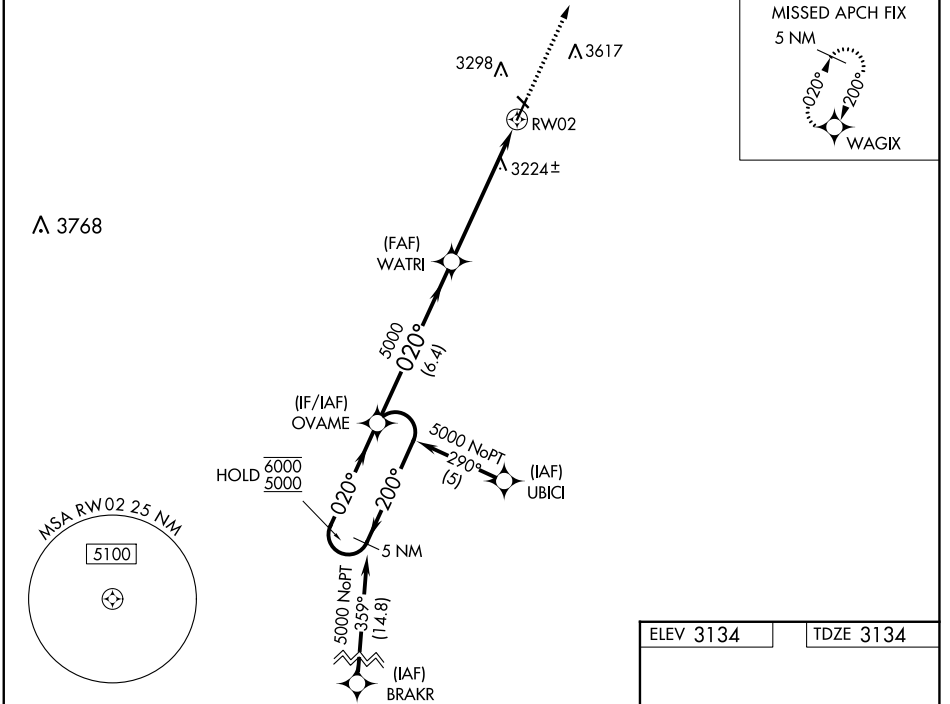
WAAS CH 63003 W02A	APP CRS 020°	Rwy Idg 5000
		TDZE 3134
		Apt Elev 3134

RNAV (GPS) RWY 2

HUGOTON MUNI (HQQ)

RNP APCH-GPS.	MISSED APPROACH: Climb to 5000 direct WAGIX and hold.
<p>⚠ Circling Rwy 13, 31 NA at night. Rwy 2 helicopter visibility reduction below 3/4 SM NA. For uncompensated Baro-VNAV systems, procedure NA below -21°C or above 54°C.</p>	

AWOS-3PT 118.6	KANSAS CITY CENTER 134.0 257.625	UNICOM 122.8 (CTAF) 0
--------------------------	--	---------------------------------



CATEGORY	A	B	C	D
LPV DA	3384-1 250 (300-1)			NA
LNAV/VNAV DA	3425-1 291 (300-1)			NA
LNAV MDA	3600-1	466 (500-1)	3600-1 3/8 466 (500-1 3/8)	NA
CIRCLING	3660-1	526 (600-1)	3980-2 1/2 846 (900-2 1/2)	NA

NC-2, 11 JUL 2024 to 08 AUG 2024

NC-2, 11 JUL 2024 to 08 AUG 2024