

WAAS CH <b>72837</b> <b>W35A</b>	APP CRS <b>354°</b>	Rwy ldg TDZE Apt Elev	<b>3501</b> <b>2702</b> <b>2707</b>
--	------------------------	-----------------------------	---

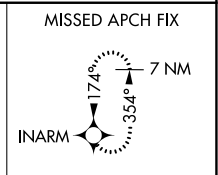
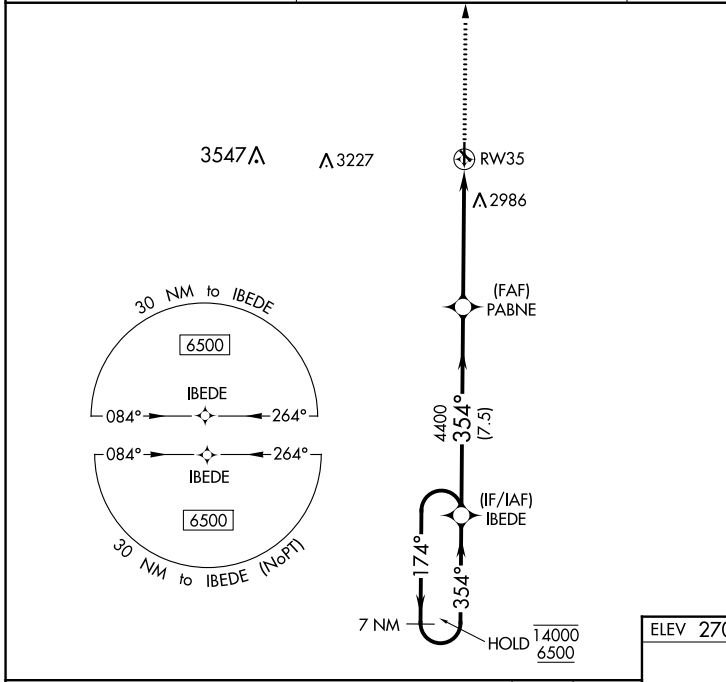
# RNAV (GPS) RWY 35

OBERLIN MUNI (OIN)

RNP APCH-GPS.  
 ⚠ Circling to Rwy 12, 17, 30 NA at night. For uncompensated Baro-VNAV systems, LNAV/VNAV NA below -20°C or above 54°C.

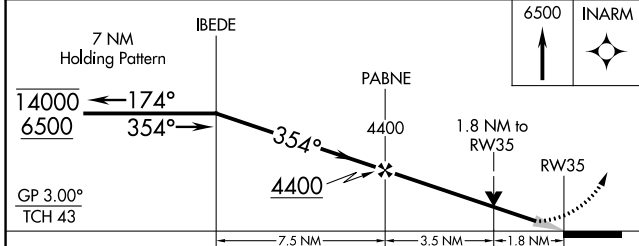
MISSED APPROACH: Climb to 6500 direct INARM and hold, continue climb-in-hold to 6500.

AWOS-3 <b>119.225</b>	DENVER CENTER <b>132.7 226.675</b>	UNICOM <b>122.8 (CTAF)</b>
--------------------------	---------------------------------------	-------------------------------



NC-2, 11 JUL 2024 to 08 AUG 2024

NC-2, 11 JUL 2024 to 08 AUG 2024



ELEV 2707	<b>D</b> TDZE 2702
-----------	--------------------

CATEGORY	A	B	C	D
LPV DA	2902-1 200 (200-1)			NA
LNAV/VNAV DA	3300-1¾ 598 (600-1¾)			NA
LNAV MDA	3300-1 598 (600-1)	3300-1¾ 598 (600-1¾)		NA
<b>C</b> CIRCLING	3300-1 593 (600-1)	3340-1 633 (700-1)	3340-1¾ 633 (700-1¾)	NA

