

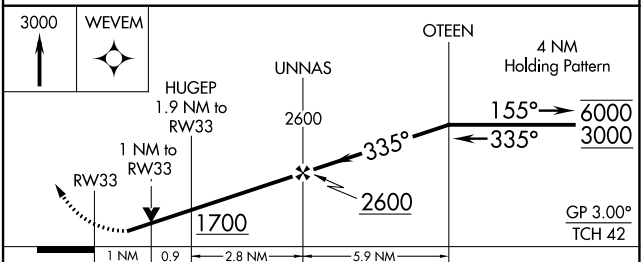
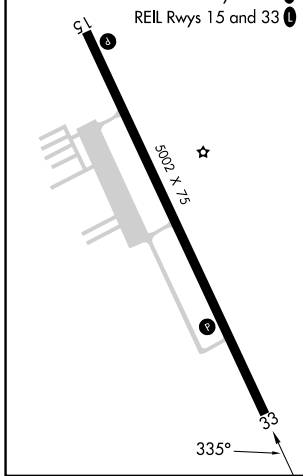
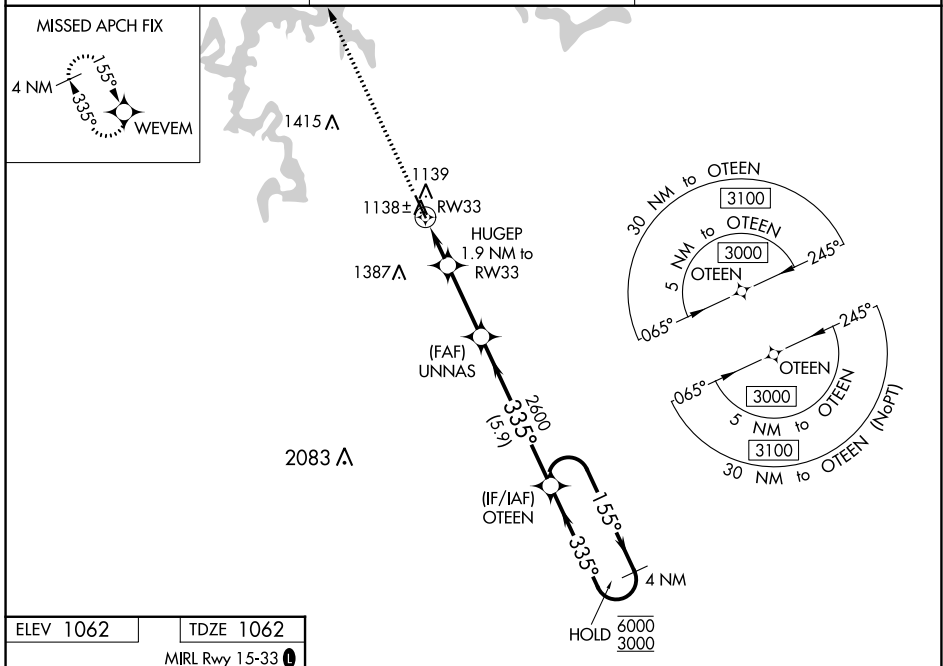
WAAS CH 97419 W33A	APP CRS 335°	Rwy Idg TDZE Apt Elev	5002 1062 1062
--	------------------------	-----------------------------	---

RNAV (GPS) RWY 33

CAMDENTON MEML-LAKE RGNL (OZS)

RNP APCH - GPS.	MISSED APPROACH: Climb to 3000 direct WEVEM and hold.
<p>⚠ Rwy 33 helicopter visibility reduction below ¼ SM NA. For uncompensated Baro-VNAV systems, LNAV/VNAV NA below -17°C or above 54°C.</p>	

AWOS-3PT 120,225	MIZZU APP CON 124.1 353.925	UNICOM 122.8 (CTAF) 0
----------------------------	---------------------------------------	---------------------------------



CATEGORY	A	B	C	D
LPV DA		1312-1 250 (300-1)		NA
LNAV/VNAV DA		1312-1 250 (300-1)		NA
LNAV MDA		1400-1 338 (400-1)		NA
C CIRCLING	1520-1	458 (500-1)	1700-1¾ 638 (700-1¾)	NA

NC-3, 11 JUL 2024 to 08 AUG 2024

NC-3, 11 JUL 2024 to 08 AUG 2024