

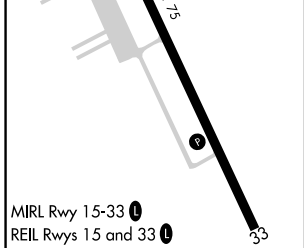
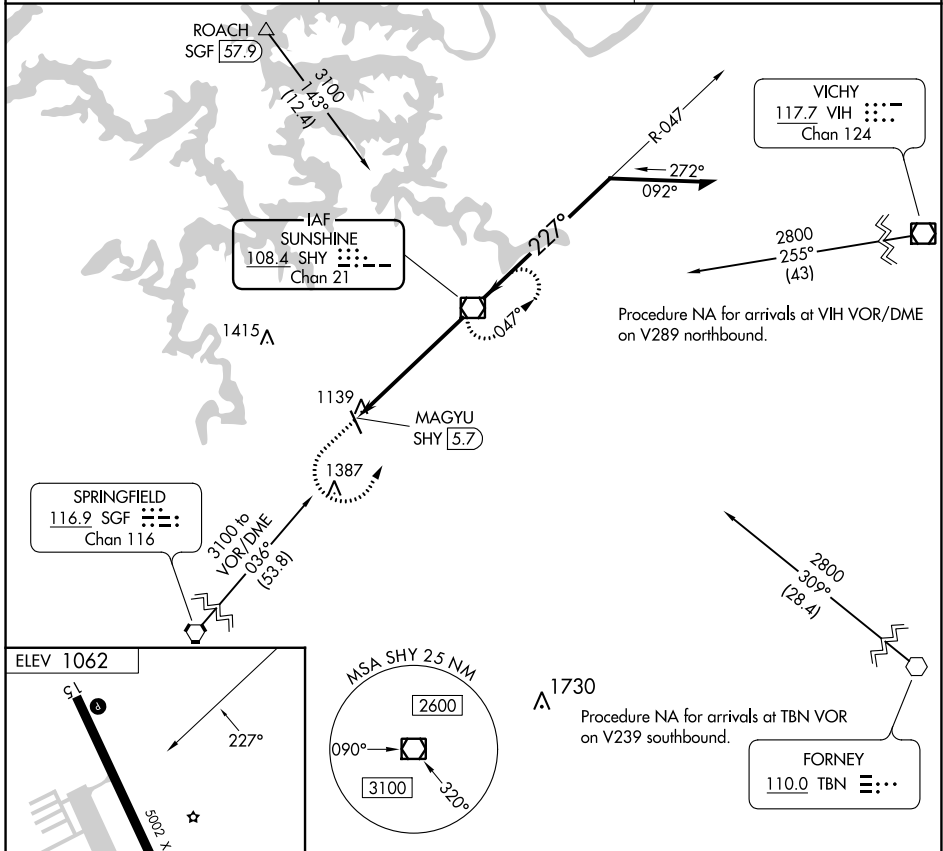
VOR/DME SHY <b>108.4</b> Chan 21	APP CRS <b>227°</b>	Rwy Idg TDZE Apt Elev <b>1062</b>	<b>N/A</b> <b>N/A</b>
--	------------------------	---	--------------------------

# VOR-A

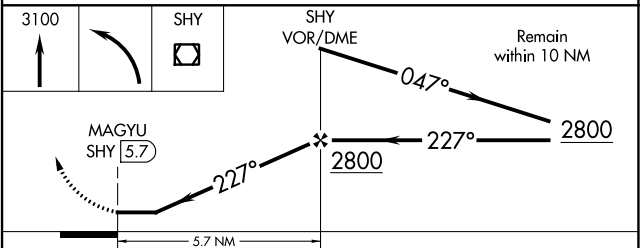
CAMDENTON MEML-LAKE RGNL (OZS)

<p><b>▽</b> <b>△</b> NA</p>	<p>MISSED APPROACH: Climb to 3100 then left turn direct SHY VOR/DME and hold.</p>
---------------------------------	---

<p>AWOS-3PT <b>120.225</b></p>	<p>MIZZU APP CON <b>124.1 353.925</b></p>	<p>UNICOM <b>122.8</b> (CTAF) <b>0</b></p>
------------------------------------	---	--



MIRL Rwy 15-33 **0**  
REIL Rwys 15 and 33 **0**



FAF to MAP 5.7 NM					
CATEGORY	A	B	C	D	
<b>0</b> CIRCLING	1520-1	458 (500-1)	1700-1¾ 638 (700-1¾)	NA	
Knots	60	90	120	150	180
Min:Sec	5:42	3:48	2:51	2:17	1:54

NC-3, 11 JUL 2024 to 08 AUG 2024

NC-3, 11 JUL 2024 to 08 AUG 2024