

| | | |
|--|------------------------|---|
| WAAS Ch 93725 W09A | APP CRS 093° | Rwy Idg 4800 TDZE 483 Apt Elev 483 |
|--|------------------------|---|

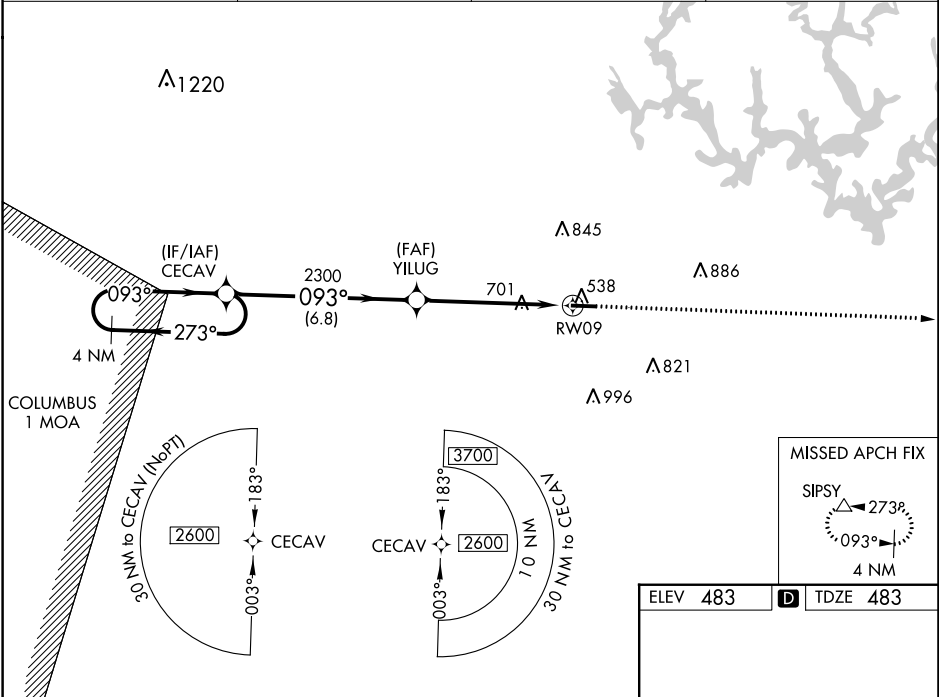
RNAV (GPS) RWY 9

WALKER COUNTY-BEVILL FLD (JFXX)

⚠ Baro-VNAV NA when using Birmingham altimeter setting. For uncompensated Baro-VNAV systems, LNAV/VNAV NA below -15°C (5°F) or above 40°C (104°F). DME/DME RNP-0.3 NA. Helicopter visibility reduction below 1 SM NA. When local altimeter setting not received, use Birmingham altimeter setting and increase all DA 104 feet and all MDA 120 feet; increase LPV all Cats, LNAV Cats C/D and Circling Cat D visibility ¼ mile increase LNAV/VNAV all Cats and Circling Cat C visibility ⅓ mile.

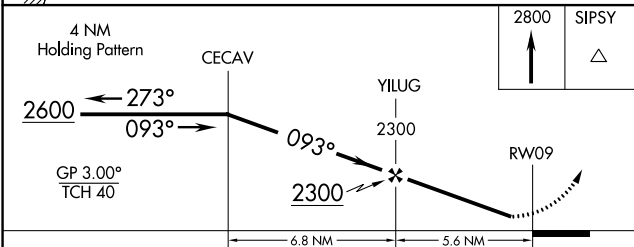
MISSED APPROACH:
Climb to 2800 direct SIPSY and hold.

| | | | |
|----------------------------|--|-----------------------|---------------------------------|
| AWOS-3PT 119.225 | BIRMINGHAM APP CON 127.675 338.2 | GCO 121.725 | UNICOM 122.7 (CTAF) 0 |
|----------------------------|--|-----------------------|---------------------------------|

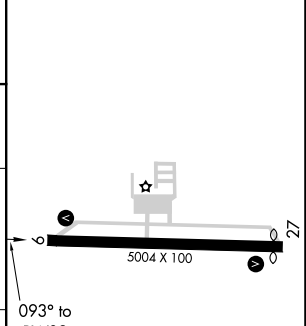


SE-4, 11 JUL 2024 to 08 AUG 2024

SE-4, 11 JUL 2024 to 08 AUG 2024



| | |
|----------|-------------------|
| ELEV 483 | D TDZE 483 |
|----------|-------------------|



| CATEGORY | A | B | C | D |
|--------------|-----------------------|-----------------------|-----------------------|-------------------------|
| LPV DA | | 751-1 | 268 (300-1) | |
| LNAV/VNAV DA | | 952-1½ | 469 (500-1½) | |
| LNAV MDA | 1040-1 | 557 (600-1) | 1040-1½ | 557 (600-1½) |
| CIRCLING | 1040-1 557 (600-1) | 1080-1 597 (600-1) | 1160-2 677 (700-2) | 1360-2¾ 877 (900-2¾) |

MIRL Rwy 9-27 **0**
REIL Rwy 9 and 27 **0**