

RADAR and DME required.

**TOP ALTITUDE:
ASSIGNED BY ATC**

REGIONAL DEP CON
125.2 343.65
CTAF
122.9

(KING4.TTT) 24053
KINGDOM FOUR DEPARTURE

AL-6830 (FAA)

ENNIS MUNI (F41)
ENNIS, TEXAS

TAKEOFF MINIMUMS
Rwys 16, 34: Standard.

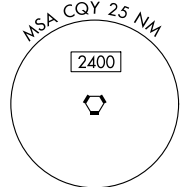
WICHITA FALLS
112.7 SPS
Chan 74

LUBBOCK
109.2 LBB
Chan 29

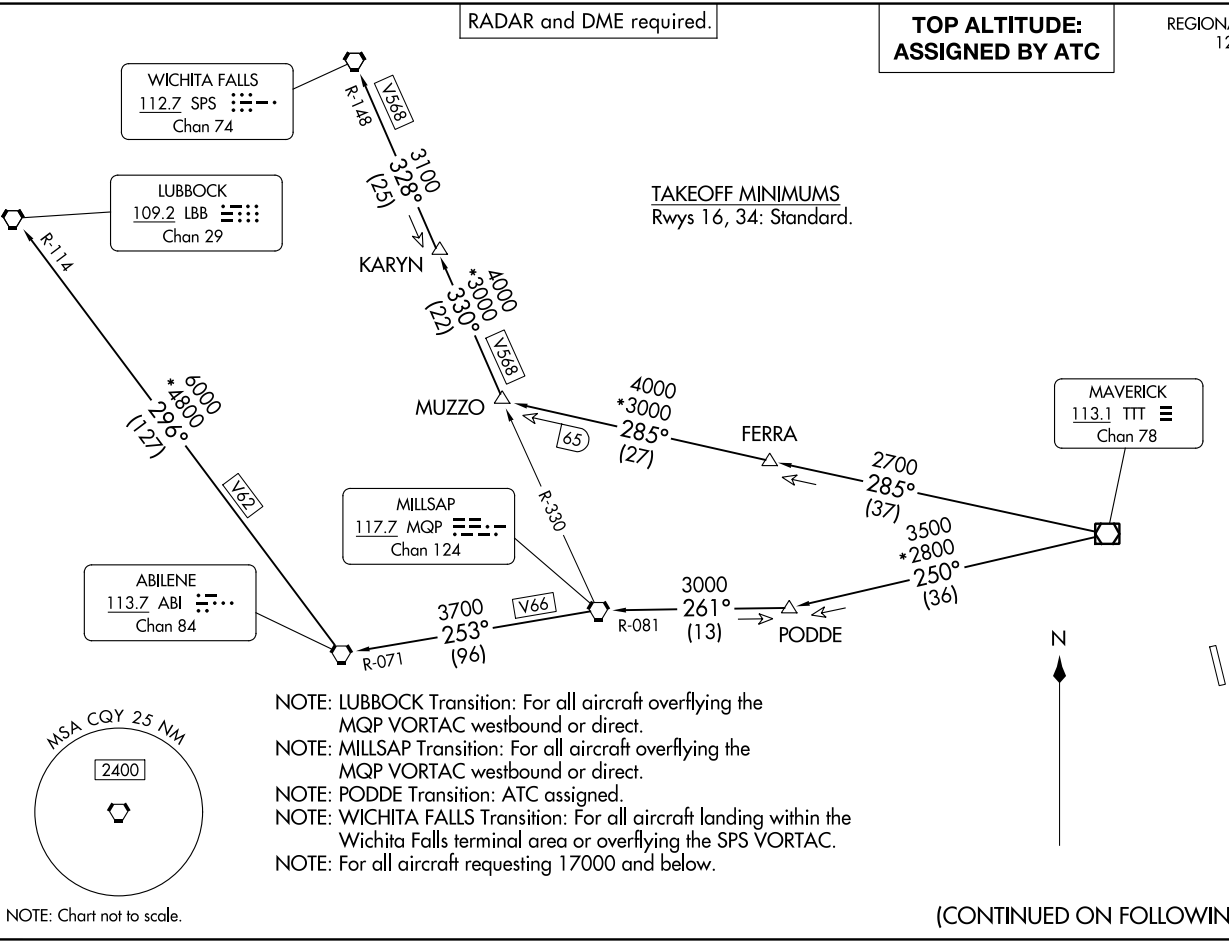
ABILENE
113.7 ABI
Chan 84

MILLSAP
117.7 MQP
Chan 124

MAVERICK
113.1 TTT
Chan 78



- NOTE: LUBBOCK Transition: For all aircraft overflying the MQP VORTAC westbound or direct.
- NOTE: MILLSAP Transition: For all aircraft overflying the MQP VORTAC westbound or direct.
- NOTE: PODDE Transition: ATC assigned.
- NOTE: WICHITA FALLS Transition: For all aircraft landing within the Wichita Falls terminal area or overflying the SPS VORTAC.
- NOTE: For all aircraft requesting 17000 and below.



(CONTINUED ON FOLLOWING PAGE)

KINGDOM FOUR DEPARTURE
(KING4.TTT) 25JAN24

ENNIS, TEXAS
ENNIS MUNI (F41)

KINGDOM FOUR DEPARTURE



DEPARTURE ROUTE DESCRIPTION

When entering controlled airspace, fly assigned heading for RADAR vectors to appropriate route. Maintain ATC assigned altitude.

LUBBOCK TRANSITION (KING4.LBB): From over TTT VOR/DME on TTT R-250 to PODDE, then on MQP R-081 to MQP VORTAC, then on MQP R-253 and ABI R-071 to ABI VORTAC, then on ABI R-296 and LBB R-114 to LBB VORTAC.

MILLSAP TRANSITION (KING4.MQP): From over TTT VOR/DME on TTT R-250 to PODDE, then on MQP R-081 to MQP VORTAC.

PODDE TRANSITION (KING4.PODDE): From over TTT VOR/DME on TTT R-250 to PODDE.

WICHITA FALLS TRANSITION (KING4.SPS): From over TTT VOR/DME on TTT R-285 to MUZZO, then on MQP R-330 and SPS R-148 to KARYN, then on SPS R-148 to SPS VORTAC.

SC-2, 11 JUL 2024 to 08 AUG 2024

SC-2, 11 JUL 2024 to 08 AUG 2024