

VOR/DME SHB 116.15 Chan 108 (Y)	APP CRS 287°	Rwy Idg Surf Elev Apt Elev	N/A 824 732
-----------------------------------------------------	------------------------	----------------------------------	----------------------------------------

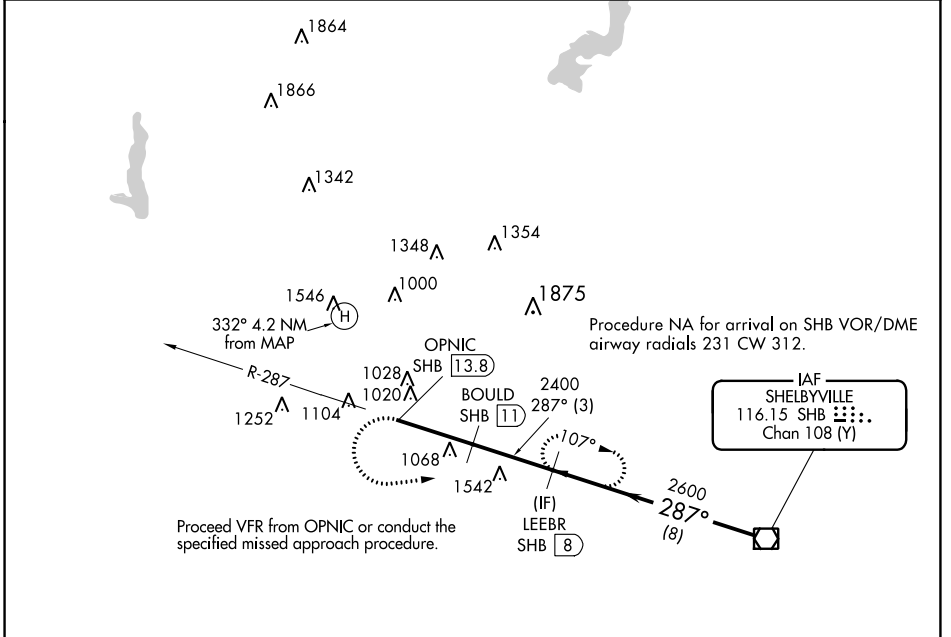
COPTER VOR/DME 287°

INDIANAPOLIS DOWNTOWN (8A.4)

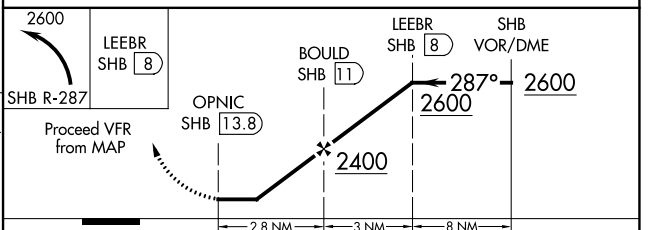
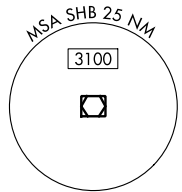
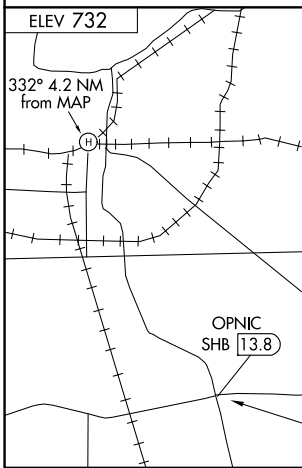
▲ NA When local altimeter setting not received, use Indianapolis Intl altimeter setting and increase MDA 40 feet. Activate High Intensity Pad Lights-CTAF.

MISSED APPROACH: Climbing left turn to 2600 via SHB R-287 to LEEBR/SHB 8 DME and hold.

AWOS-3 135.525	INDIANAPOLIS APP CON 125.275 317.8	UNICOM 123.05 (CTAF) 0
--------------------------	----------------------------------------------	----------------------------------



CAUTION: Heliport located in area of numerous lighted and unlighted obstructions.



CATEGORY	COPTER
H-287°	1340-¾ 516 (600-¾)

EC-2, 11 JUL 2024 to 08 AUG 2024

EC-2, 11 JUL 2024 to 08 AUG 2024