

WAAS CH <b>49113</b> <b>W35A</b>	APP CRS <b>349°</b>	Rwy ldg <b>5498</b> TDZE <b>1670</b> Apt Elev <b>1670</b>
--	------------------------	---

# RNAV (GPS) RWY 35

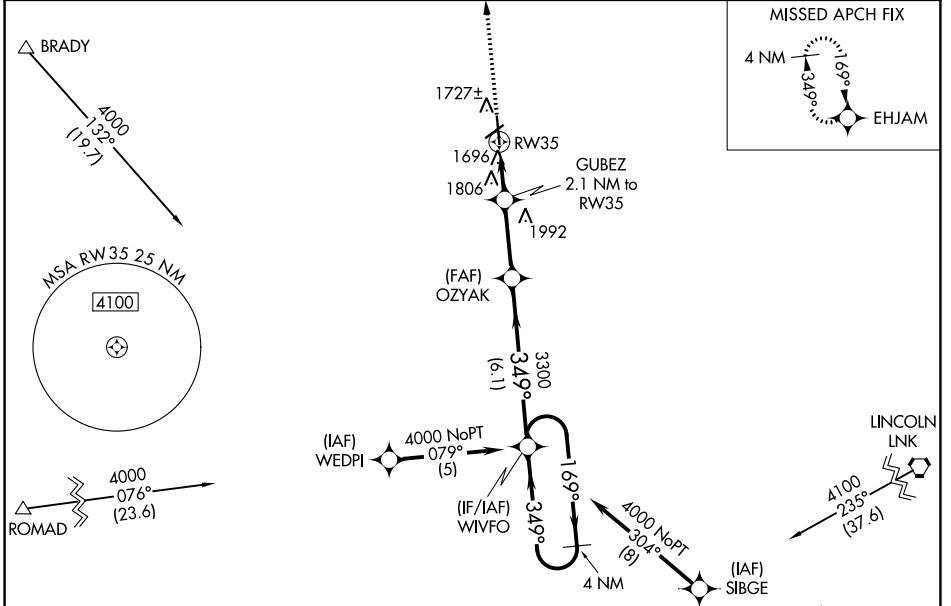
YORK MUNI (JYR)

RNP APCH.

**⚠** For uncompensated Baro-VNAV systems, LNAV/VNAV NA below -18°C or above 54°C.  
**⚠** When local altimeter setting not received, use Aurora altimeter setting and increase all DA/MDA 60 feet and all LPV, all LNAV/VNAV, and Cat C LNAV visibility ¼ mile.  
 VDP and Baro-VNAV NA when using Aurora altimeter setting.

MISSED APPROACH:  
 Climb to 4000 direct  
 EHJAM and hold.

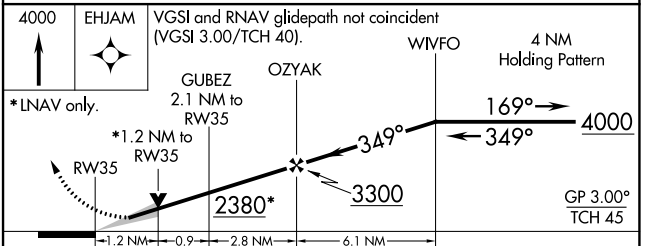
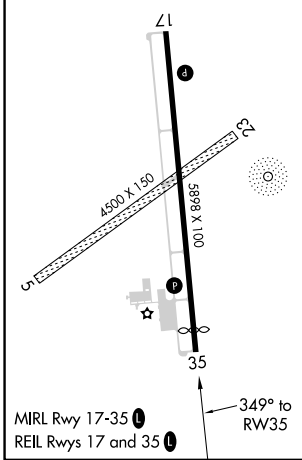
AWOS-3 <b>124.175</b>	MINNEAPOLIS CENTER <b>119.4 278.8</b>	UNICOM <b>122.8 (CTAF)</b> <b>📶</b>
--------------------------	--	--



NC-2, 11 JUL 2024 to 08 AUG 2024

NC-2, 11 JUL 2024 to 08 AUG 2024

ELEV 1670	<b>D</b>	TDZE 1670
-----------	----------	-----------



CATEGORY	A	B	C	D
LPV DA	1920- <sup>3</sup> / <sub>4</sub>	250 (300- <sup>3</sup> / <sub>4</sub> )		NA
LNAV/VNAV DA	2004-1 <sup>1</sup> / <sub>4</sub>	334 (400-1 <sup>1</sup> / <sub>4</sub> )		NA
LNAV MDA	2060-1	390 (400-1)		NA
CIRCLING	2060-1 390 (400-1)	2180-1 510 (600-1)	2200-1 <sup>1</sup> / <sub>2</sub> 530 (600-1 <sup>1</sup> / <sub>2</sub> )	NA