

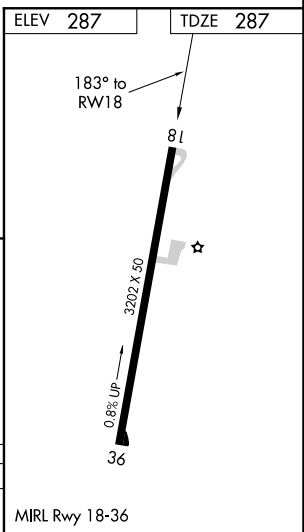
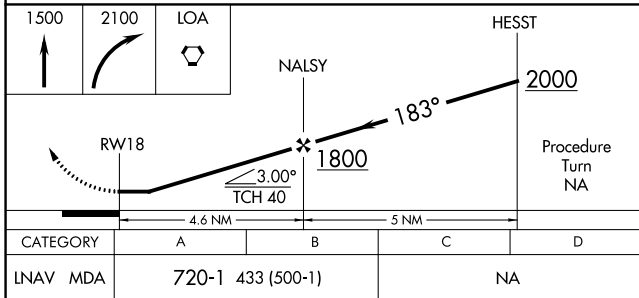
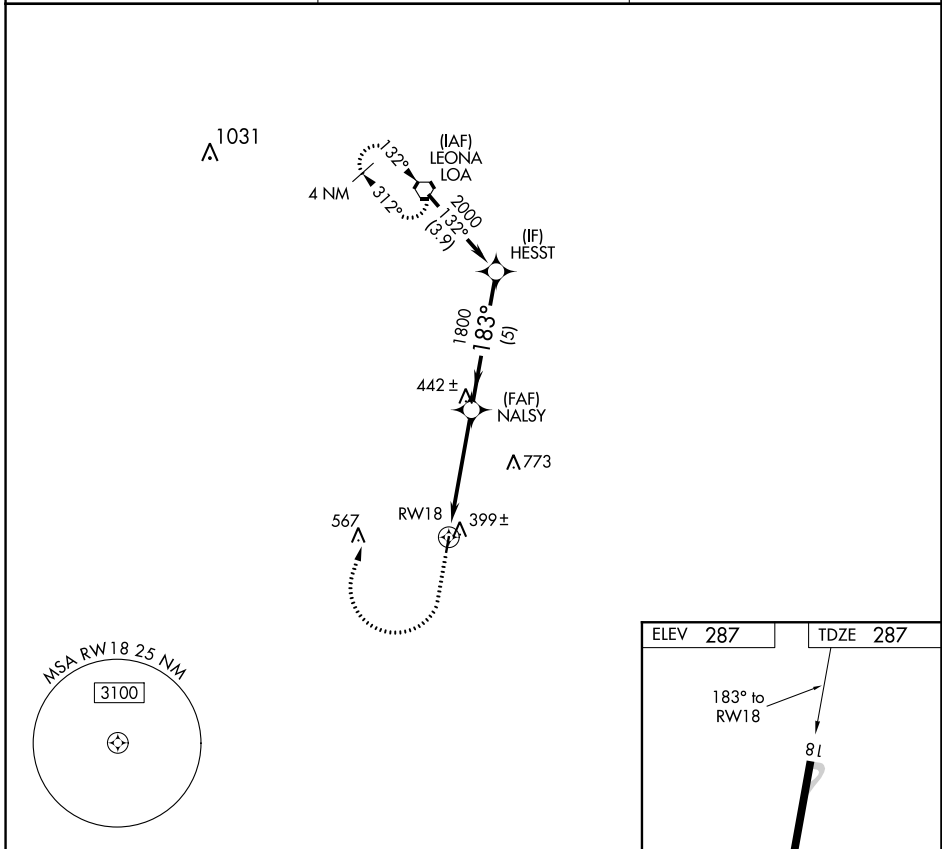
APP CRS	Rwy Idg	3202
183°	TDZE	287
	Apt Elev	287

RNAV (GPS) RWY 18

MADISONVILLE MUNI (51R)

RNP APCH.	Use Huntsville Muni altimeter setting. Procedure NA at night. Rwy 18 helicopter visibility reduction below 1 SM NA.	MISSED APPROACH: Climb to 1500, then climbing right turn to 2100 direct LOA VORTAC and hold.
▼ Use Huntsville Muni altimeter setting. ▲ NA Procedure NA at night. Rwy 18 helicopter visibility reduction below 1 SM NA.		

UTS ASOS 119.425	HOUSTON CENTER 134.8 269.6	CTAF 122.9
----------------------------	--------------------------------------	----------------------



SC-5, 11 JUL 2024 to 08 AUG 2024

SC-5, 11 JUL 2024 to 08 AUG 2024