

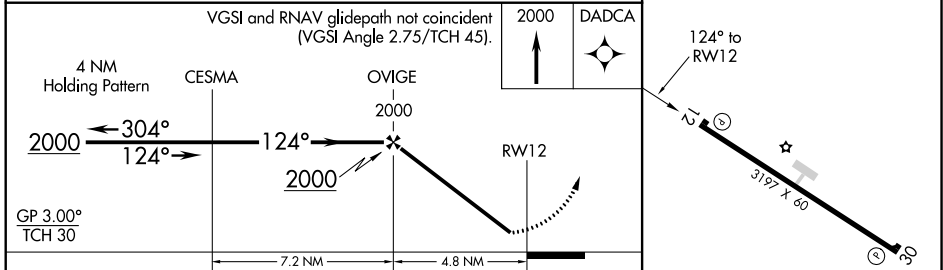
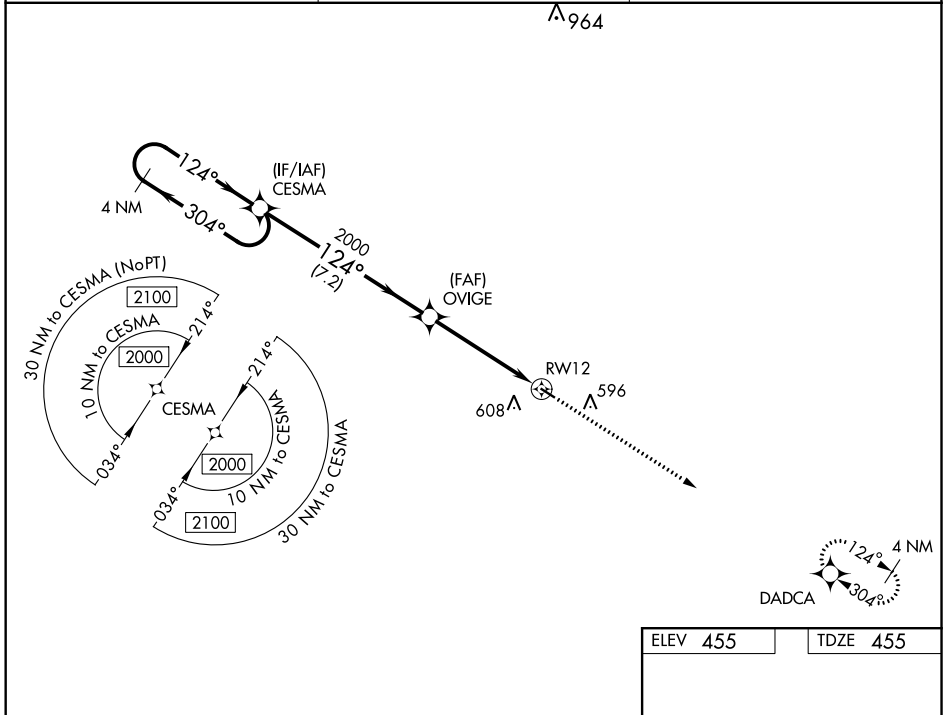
WAAS CH <b>90408</b> <b>W12A</b>	APP CRS <b>124°</b>	Rwy Idg TDZE <b>455</b> Apt Elev <b>455</b>
--	------------------------	---

# RNAV (GPS) RWY 12

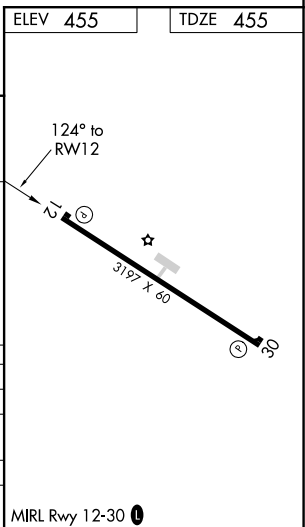
PRENTISS-JEFFERSON DAVIS COUNTY (M43)

RNP APCH.	<p><b>⚠</b> Baro-VNAV NA. Use Brookhaven altimeter setting; when not received, use Hattiesburg/Laurel altimeter setting and increase all DA 27 feet and all MDA 40 feet and increase LPV and LNAV/VNAV all Cats visibility <math>\frac{1}{8}</math> mile. Rwy 12 helicopter visibility reduction below <math>\frac{3}{4}</math> SM NA.</p>	<p><b>MISSED APPROACH:</b> Climb to 2000 direct DADCA and hold.</p>
-----------	--	---

1R7 AWOS-3P <b>118.125</b>	HOUSTON CENTER <b>126.8 327.8</b>	UNICOM <b>122.8 (CTAF) 0</b>
-------------------------------	--------------------------------------	---------------------------------



CATEGORY	A	B	C	D
LPV DA	770-1 $\frac{1}{8}$	315 (400-1 $\frac{1}{8}$ )		NA
LNAV/VNAV DA	959-1 $\frac{3}{4}$	504 (600-1 $\frac{3}{4}$ )		NA
LNAV MDA	1020-1	565 (600-1)		NA
<b>C</b> CIRCLING	1080-1	625 (700-1)		NA



# RNAV (GPS) RWY 12

SC-4, 11 JUL 2024 to 08 AUG 2024

SC-4, 11 JUL 2024 to 08 AUG 2024