

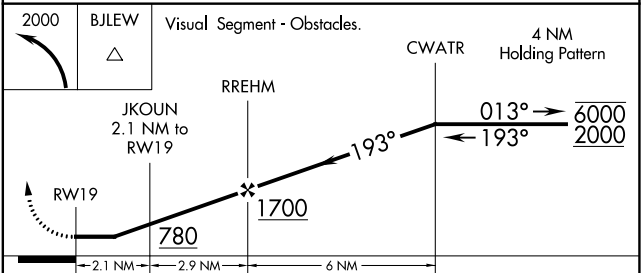
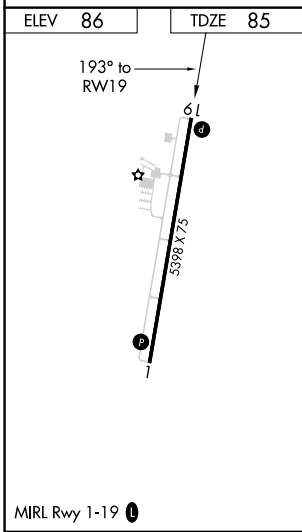
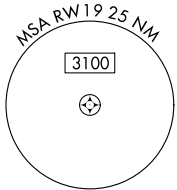
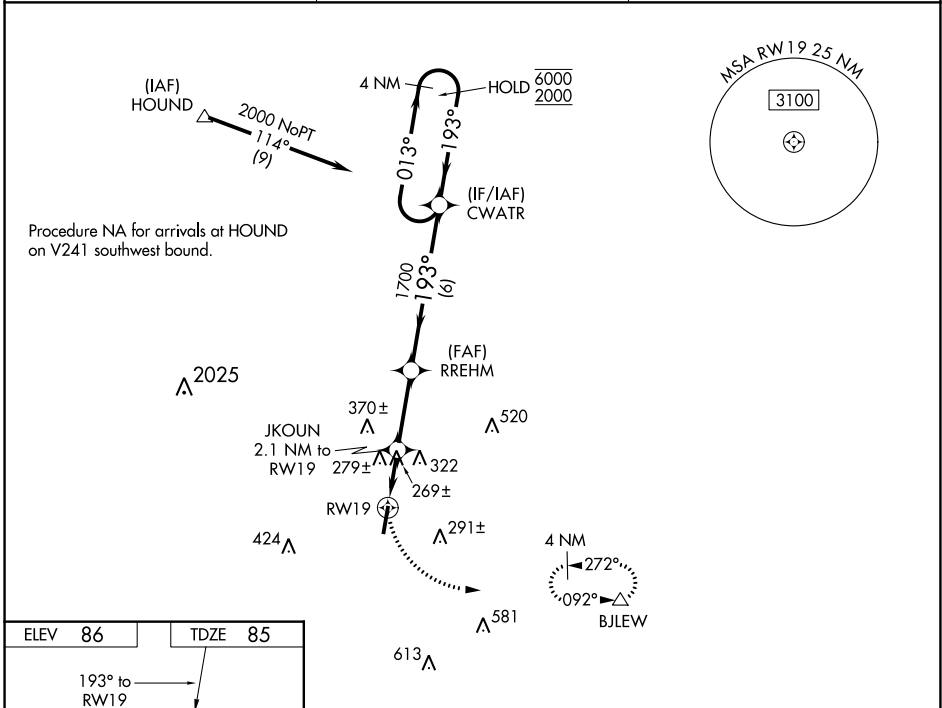
WAAS CH <b>69344</b>	APP CRS <b>193°</b>	Rwy Idg TDZE <b>85</b>	<b>5398</b>
<b>W19A</b>		Apt Elev <b>86</b>	

# RNAV (GPS) RWY 19

TRI-COUNTY (BCR)

RNP APCH - GPS.	MISSED APPROACH: Climbing left turn to 2000 direct BJLEW and hold.
<p>▼ Rwy 19 helicopter visibility reduction below 1 SM NA. When local altimeter setting not received, use Marianna altimeter setting and increase all MDAs 60 feet and visibility Cat C ¼ SM. Straight-in Rwy 19 NA at night, Circling Rwy 19 NA at night.</p>	

ASOS <b>119.825</b>	CAIRNS APP CON ★ <b>133.75 270.35</b>	UNICOM <b>122.725 (CTAF) 0</b>
------------------------	--	-----------------------------------



CATEGORY	A	B	C	D
LP MDA	580-1	495 (500-1)	580-1 3/8 495 (500-1 3/8)	NA
LNAV MDA	600-1	515 (600-1)	600-1 3/8 515 (600-1 3/8)	NA
<b>C</b> CIRCLING	600-1	514 (600-1)	680-1 1/2 594 (600-1 1/2)	NA

SE-3, 11 JUL 2024 to 08 AUG 2024

SE-3, 11 JUL 2024 to 08 AUG 2024